

## Product datasheet for **TA323848**

### BTG3 Rabbit Polyclonal Antibody

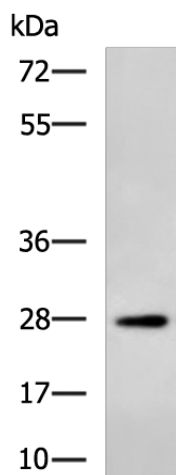
#### Product data:

Product Type:	Primary Antibodies
Applications:	IHC, WB
Recommended Dilution:	WB: 500-2000 WB positive control: Mouse testis tissue lysate IHC: 100-200 Positive control: Human gastric cancer Predicted cell location: Cytoplasm
Reactivity:	Human, Mouse
Host:	Rabbit
Isotype:	IgG
Clonality:	Polyclonal
Immunogen:	Fusion protein corresponding to a region derived from 22-252 amino acids of human BTG family, member 3
Formulation:	PBS pH7.3, 0.05% NaN <sub>3</sub> , 50% glycerol
Concentration:	lot specific
Purification:	Antigen affinity purification
Conjugation:	Unconjugated
Storage:	Store at -20°C as received.
Stability:	Stable for 12 months from date of receipt.
Gene Name:	BTG family member 3
Database Link:	<a href="#">NP_006797</a> <a href="#">Entrez Gene 12228 Mouse</a> <a href="#">Entrez Gene 10950 Human</a> <a href="#">Q14201</a>
Background:	The protein encoded by this gene is a member of the BTG/Tob family. This family has structurally related proteins that appear to have antiproliferative properties. This encoded protein might play a role in neurogenesis in the central nervous system. Two transcript variants encoding different isoforms have been found for this gene.
Synonyms:	ANA; APRO4; TOB5; TOB55; TOFA

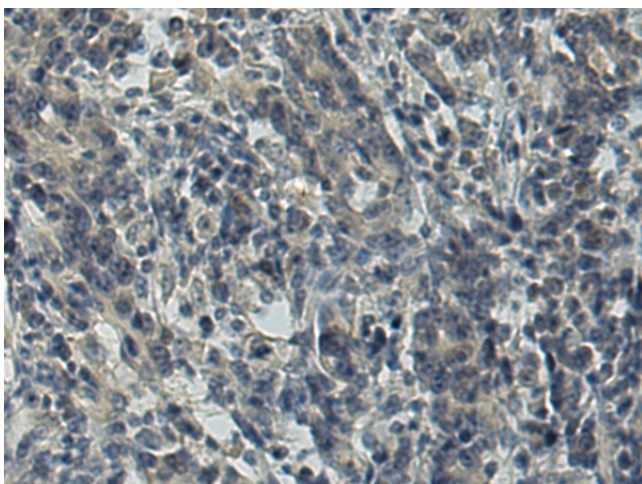


[View online »](#)

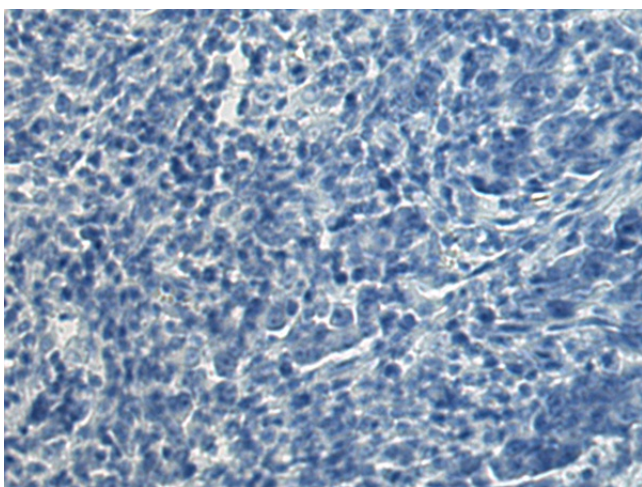
## Product images:



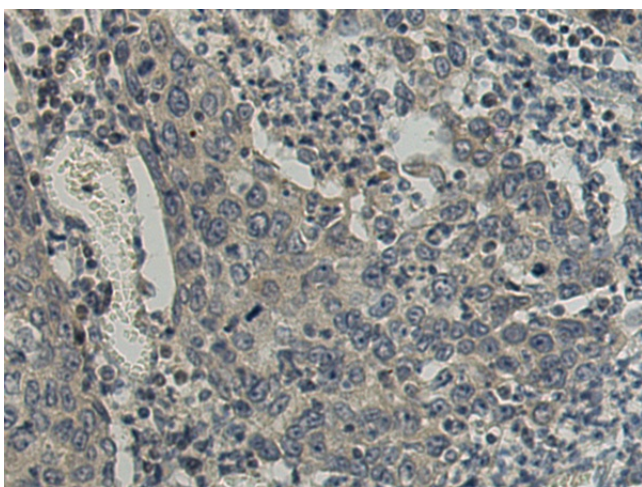
Gel: 8%SDS-PAGE  
Lysate: 40  $\mu$ g  
Lane: Mouse testis tissue lysate  
Primary antibody: TA323848 (BTG3 Antibody) at dilution 1/500  
Secondary antibody: Goat anti rabbit IgG at 1/5000 dilution  
Exposure time: 10 minutes



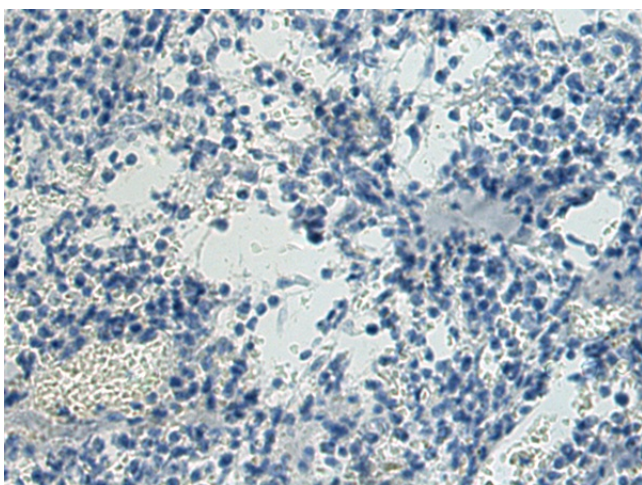
Immunohistochemistry of paraffin-embedded Human gastric cancer tissue using TA323848 (BTG3 Antibody) at dilution 1/150 (Original magnification:  $\times$ 200)



Immunohistochemistry of paraffin-embedded Human gastric cancer tissue using TA323848 (BTG3 Antibody) at dilution 1/150, treated with fusion protein. (Original magnification:  $\times 200$ )



Immunohistochemistry of paraffin-embedded Human esophagus cancer tissue using TA323848 (BTG3 Antibody) at dilution 1/150 (Original magnification:  $\times 200$ )



Immunohistochemistry of paraffin-embedded Human esophagus cancer tissue using TA323848 (BTG3 Antibody) at dilution 1/150, treated with fusion protein. (Original magnification:  $\times 200$ )