

## Product datasheet for **TA323847**

### Claudin 5 (CLDN5) Rabbit Polyclonal Antibody

#### Product data:

Product Type:	Primary Antibodies
Applications:	IHC
Recommended Dilution:	IHC: 10-50 Positive control: Human gastric cancer Predicted cell location: Cytoplasm
Reactivity:	Human, Mouse, Rat
Host:	Rabbit
Isotype:	IgG
Clonality:	Polyclonal
Immunogen:	Synthetic peptide corresponding to a region derived from 202-215 amino acids of Human claudin 5
Formulation:	PBS pH7.3, 0.05% NaN <sub>3</sub> , 50% glycerol
Concentration:	lot specific
Purification:	Antigen affinity purification
Conjugation:	Unconjugated
Storage:	Store at -20°C as received.
Stability:	Stable for 12 months from date of receipt.
Gene Name:	claudin 5
Database Link:	<a href="#">NP_003268</a> <a href="#">Entrez Gene 12741 MouseEntrez Gene 65131 RatEntrez Gene 7122 Human O00501</a>
Background:	This gene encodes a member of the claudin family. Claudins are integral membrane proteins and components of tight junction strands. Tight junction strands serve as a physical barrier to prevent solutes and water from passing freely through the paracellular space between epithelial or endothelial cell sheets. Mutations in this gene have been found in patients with velocardiofacial syndrome. Alternatively spliced transcript variants encoding the same protein have been found for this gene
Synonyms:	AWAL; BEC1; CPETRL1; TMVCF

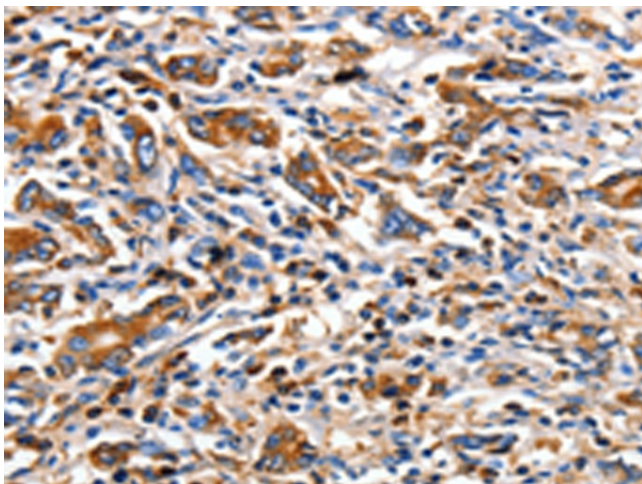


[View online »](#)

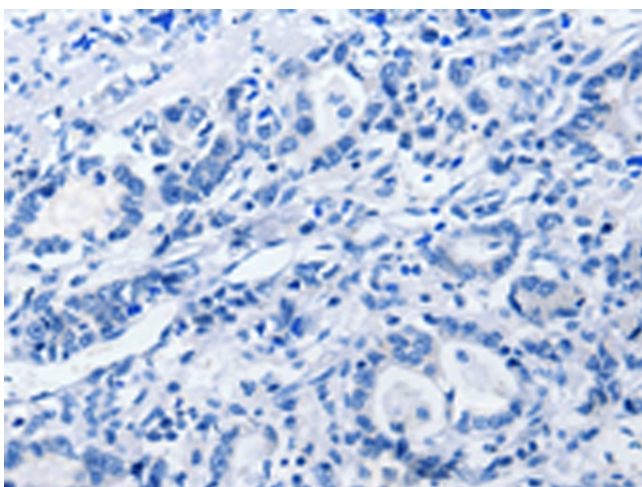
Protein Families: Transmembrane

Protein Pathways: Cell adhesion molecules (CAMs), Leukocyte transendothelial migration, Tight junction

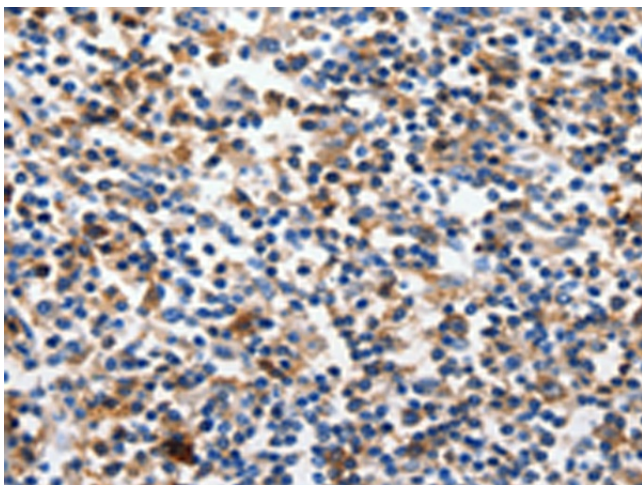
**Product images:**



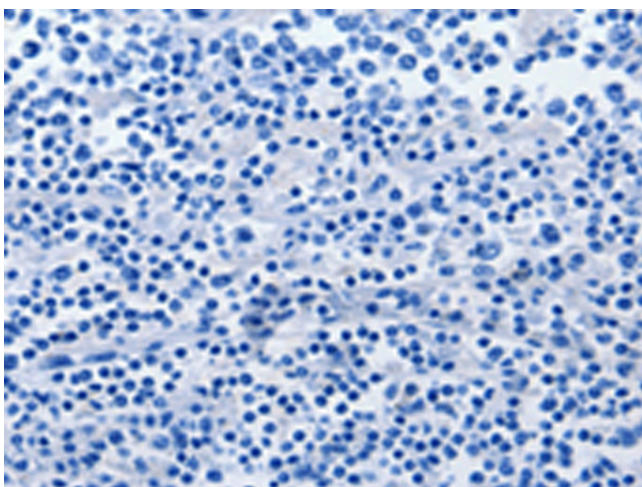
Immunohistochemistry of paraffin-embedded Human gastric cancer tissue using TA323847 (CLDN5 Antibody) at dilution 1/10 (Original magnification:  $\times 200$ )



Immunohistochemistry of paraffin-embedded Human gastric cancer tissue using TA323847 (CLDN5 Antibody) at dilution 1/10, treated with synthetic peptide. (Original magnification:  $\times 200$ )



Immunohistochemistry of paraffin-embedded Human tonsil tissue using TA323847 (CLDN5 Antibody) at dilution 1/10 (Original magnification: ×200)



Immunohistochemistry of paraffin-embedded Human tonsil tissue using TA323847 (CLDN5 Antibody) at dilution 1/10, treated with synthetic peptide. (Original magnification: ×200)