

## Product datasheet for **TA323845S**

### AIF (AIFM1) Rabbit Polyclonal Antibody

#### Product data:

Product Type:	Primary Antibodies
Applications:	IHC, WB
Recommended Dilution:	WB: 1000-5000 WB positive control: Hela, A549, MCF7, HepG2, K562 cell lysates IHC: 100-300 Positive control: Human liver cancer Predicted cell location: Cytoplasm
Reactivity:	Human, Mouse, Rat
Host:	Rabbit
Isotype:	IgG
Clonality:	Polyclonal
Immunogen:	Fusion protein corresponding to C terminal 250 amino acids of human apoptosis-inducing factor, mitochondrion-associated, 1
Formulation:	PBS pH7.3, 0.05% NaN <sub>3</sub> , 50% glycerol
Purification:	Antigen affinity purification
Conjugation:	Unconjugated
Storage:	Store at -20°C as received.
Stability:	Stable for 12 months from date of receipt.
Predicted Protein Size:	67 kDa
Gene Name:	apoptosis inducing factor, mitochondria associated 1
Database Link:	<a href="#">NP_001124318</a> <a href="#">Entrez Gene 26926 Mouse</a> <a href="#">Entrez Gene 83533 Rat</a> <a href="#">Entrez Gene 9131 Human</a> <a href="#">O95831</a>



[View online »](#)

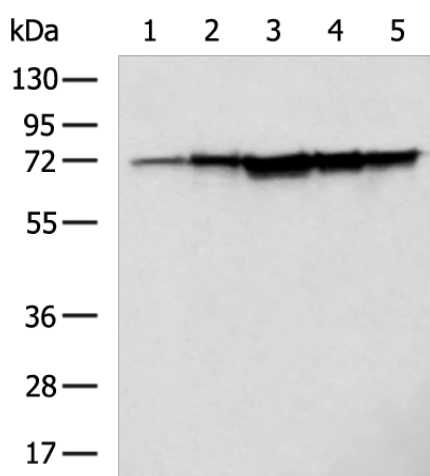
**Background:** This gene encodes a flavoprotein essential for nuclear disassembly in apoptotic cells; and it is found in the mitochondrial intermembrane space in healthy cells. Induction of apoptosis results in the translocation of this protein to the nucleus where it affects chromosome condensation and fragmentation. In addition; this gene product induces mitochondria to release the apoptogenic proteins cytochrome c and caspase-9. Mutations in this gene cause combined oxidative phosphorylation deficiency 6; which results in a severe mitochondrial encephalomyopathy. Alternative splicing results in multiple transcript variants. A related pseudogene has been identified on chromosome 10.?

**Synonyms:** AIF; CMT2D; CMTX4; COWCK; COXPD6; NADMR; NAMSD; PDCD8

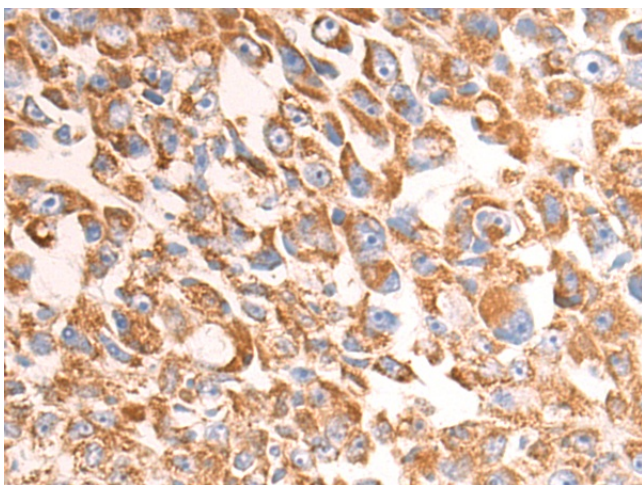
**Protein Families:** Druggable Genome, Transmembrane

**Protein Pathways:** Apoptosis

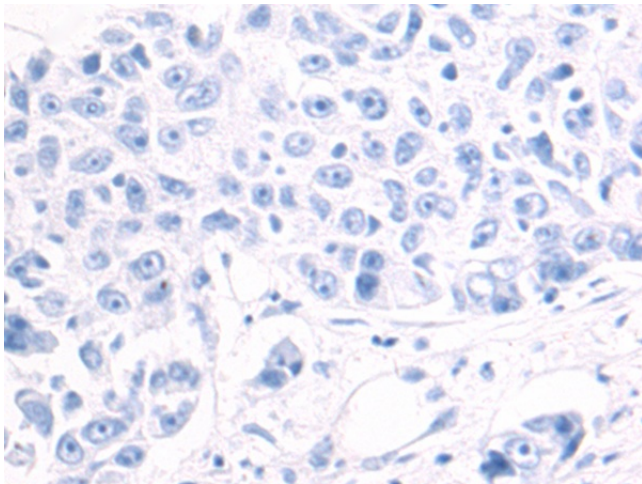
### Product images:



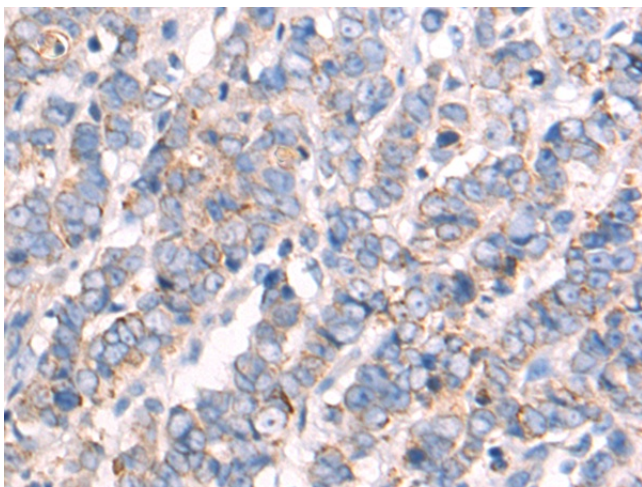
Gel: 10%SDS-PAGE  
Lysate: 60 µg  
Lane: Jurkat cells  
Primary antibody: [TA323845] (AIFM1 Antibody) at dilution 1/150  
Secondary antibody: Goat anti rabbit IgG at 1/8000 dilution  
Exposure time: 40 seconds



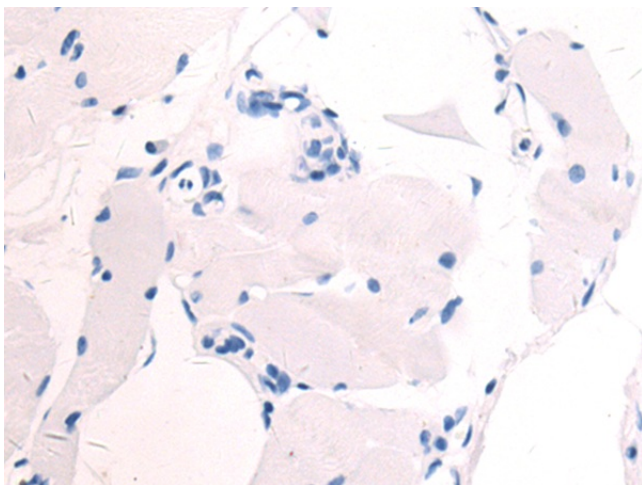
Immunohistochemistry of paraffin-embedded Human liver cancer tissue using [TA323845] (AIFM1 Antibody) at dilution 1/15 (Original magnification: ×200)



Immunohistochemistry of paraffin-embedded Human liver cancer tissue using [TA323845] (AIFM1 Antibody) at dilution 1/15, treated with fusion protein. (Original magnification: ×200)



Immunohistochemistry of paraffin-embedded Human colon cancer tissue using [TA323845] (AIFM1 Antibody) at dilution 1/15 (Original magnification: ×200)



Immunohistochemistry of paraffin-embedded Human colon cancer tissue using [TA323845] (AIFM1 Antibody) at dilution 1/15, treated with fusion protein. (Original magnification: ×200)