

Product datasheet for **TA323844**

AIF (AIFM1) Rabbit Polyclonal Antibody

Product data:

Product Type:	Primary Antibodies
Applications:	IHC, WB
Recommended Dilution:	WB: 500-2000 WB positive control: NIH/3T3 , Hela and 293T cells IHC: 25-100 Positive control: Human liver cancer Predicted cell location: Cytoplasm
Reactivity:	Human, Mouse, Rat
Host:	Rabbit
Isotype:	IgG
Clonality:	Polyclonal
Immunogen:	Fusion protein corresponding to C terminal 250 amino acids of human apoptosis-inducing factor, mitochondrion-associated, 1
Formulation:	PBS pH7.3, 0.05% NaN ₃ , 50% glycerol
Concentration:	lot specific
Purification:	Antigen affinity purification
Conjugation:	Unconjugated
Storage:	Store at -20°C as received.
Stability:	Stable for 12 months from date of receipt.
Predicted Protein Size:	67 kDa
Gene Name:	apoptosis inducing factor, mitochondria associated 1
Database Link:	NP_001124318 Entrez Gene 26926 Mouse Entrez Gene 83533 Rat Entrez Gene 9131 Human O95831



[View online »](#)

Background:

This gene encodes a flavoprotein essential for nuclear disassembly in apoptotic cells; and it is found in the mitochondrial intermembrane space in healthy cells. Induction of apoptosis results in the translocation of this protein to the nucleus where it affects chromosome condensation and fragmentation. In addition; this gene product induces mitochondria to release the apoptogenic proteins cytochrome c and caspase-9. Mutations in this gene cause combined oxidative phosphorylation deficiency 6; which results in a severe mitochondrial encephalomyopathy. Alternative splicing results in multiple transcript variants. A related pseudogene has been identified on chromosome 10.?

Synonyms:

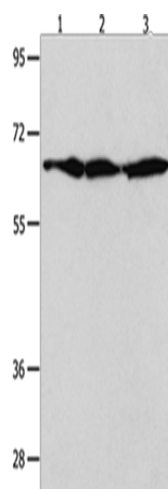
AIF; CMT2D; CMTX4; COWCK; COXPD6; NADMR; NAMSD; PDCD8

Protein Families:

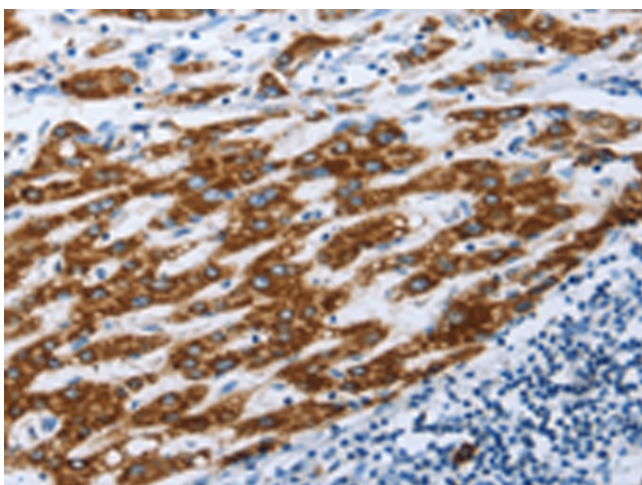
Druggable Genome, Transmembrane

Protein Pathways:

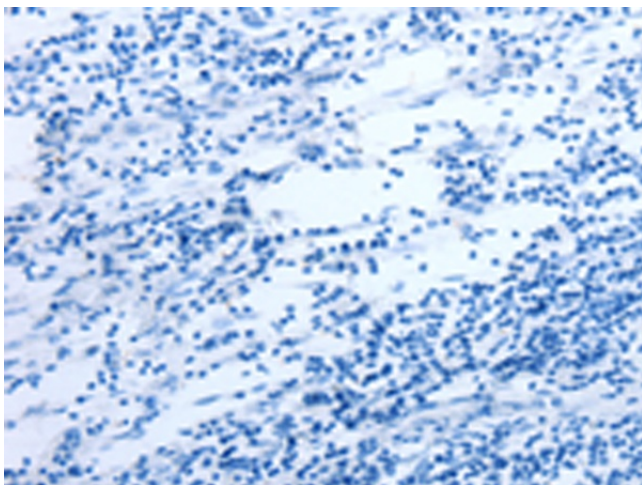
Apoptosis

Product images:

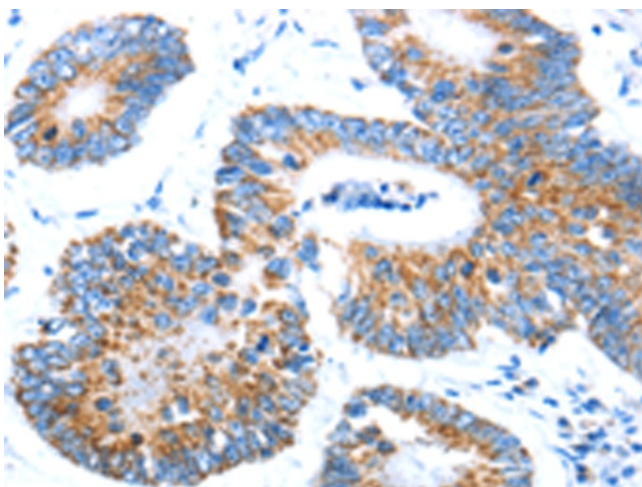
Gel: 10+12%SDS-PAGE
Lysate: 30 µg
Lane 1-3: NIH/3T3 cells
HeLa cells
293T cells
Primary antibody: TA323844 (AIFM1 Antibody) at dilution 1/600
Secondary antibody: Goat anti rabbit IgG at 1/8000 dilution
Exposure time: 20 seconds



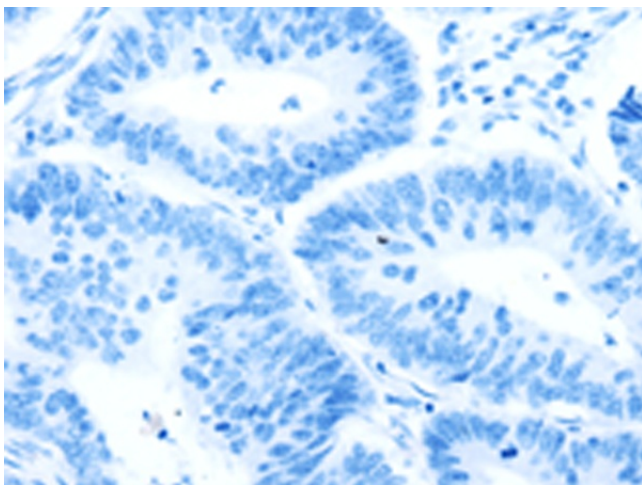
Immunohistochemistry of paraffin-embedded Human liver cancer tissue using TA323844 (AIFM1 Antibody) at dilution 1/30 (Original magnification: ×200)



Immunohistochemistry of paraffin-embedded Human liver cancer tissue using TA323844 (AIFM1 Antibody) at dilution 1/30, treated with fusion protein. (Original magnification: $\times 200$)



Immunohistochemistry of paraffin-embedded Human colon cancer tissue using TA323844 (AIFM1 Antibody) at dilution 1/30 (Original magnification: $\times 200$)



Immunohistochemistry of paraffin-embedded Human colon cancer tissue using TA323844 (AIFM1 Antibody) at dilution 1/30, treated with fusion protein. (Original magnification: $\times 200$)