

## Product datasheet for **TA323843S**

### Growth Arrest Specific Protein 7 (GAS7) Rabbit Polyclonal Antibody

#### Product data:

Product Type:	Primary Antibodies
Applications:	IHC, WB
Recommended Dilution:	WB: 500-2000 WB positive control: Human fetal brain and mouse brain tissue IHC: 50-200 Positive control: Human thyroid cancer Predicted cell location: Cytoplasm
Reactivity:	Human, Mouse, Rat
Host:	Rabbit
Isotype:	IgG
Clonality:	Polyclonal
Immunogen:	Fusion protein corresponding to a region derived from 184-382 amino acids of human growth arrest-specific 7
Formulation:	PBS pH7.3, 0.05% NaN <sub>3</sub> , 50% glycerol
Purification:	Antigen affinity purification
Conjugation:	Unconjugated
Storage:	Store at -20°C as received.
Stability:	Stable for 12 months from date of receipt.
Predicted Protein Size:	47 kDa
Gene Name:	growth arrest specific 7
Database Link:	<a href="#">NP_001124303</a> <a href="#">Entrez Gene 14457 MouseEntrez Gene 85246 RatEntrez Gene 8522 Human O60861</a>
Background:	Growth arrest-specific 7 is expressed primarily in terminally differentiated brain cells and predominantly in mature cerebellar Purkinje neurons. GAS7 plays a putative role in neuronal development. Several transcript variants encoding proteins which vary in the N-terminus have been described. May play a role in promoting maturation and morphological differentiation of cerebellar neurons.

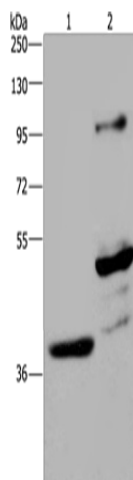


[View online »](#)

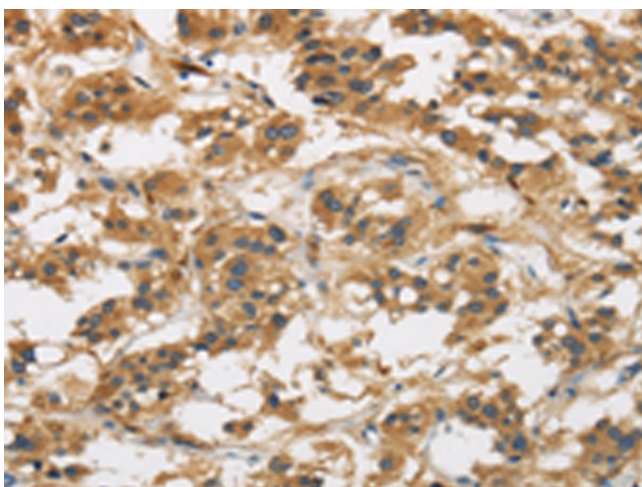
Synonyms: GAS7; MLL

Protein Families: Transcription Factors

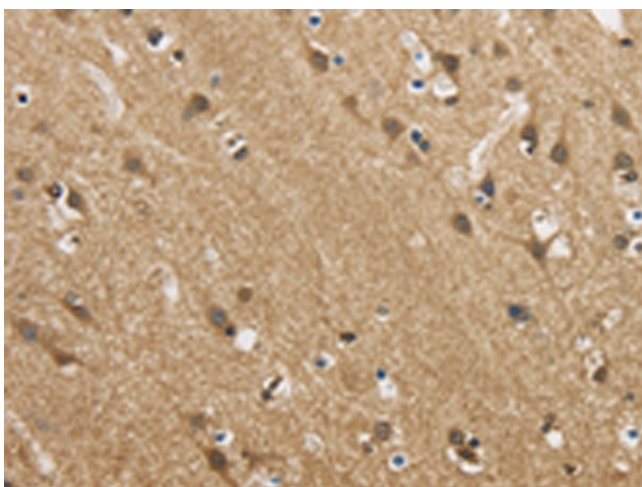
### Product images:



Gel: 8%SDS-PAGE  
Lysate: 40  $\mu$ g  
Lane 1-2: Human fetal brain tissue  
mouse brain tissue  
Primary antibody: [TA323843] (GAS7 Antibody) at dilution 1/625  
Secondary antibody: Goat anti rabbit IgG at 1/8000 dilution  
Exposure time: 2 minutes



Immunohistochemistry of paraffin-embedded Human thyroid cancer tissue using [TA323843] (GAS7 Antibody) at dilution 1/50. (Original magnification:  $\times$ 200)



Immunohistochemistry of paraffin-embedded Human brain tissue using [TA323843] (GAS7 Antibody) at dilution 1/50. (Original magnification: ×200)