

Product datasheet for **TA323840**

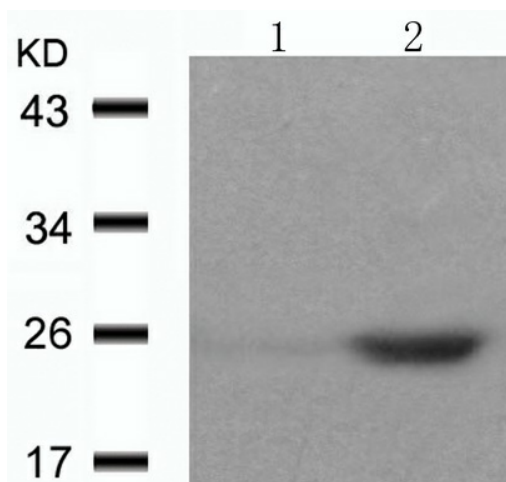
EIF4E Rabbit Polyclonal Antibody

Product data:

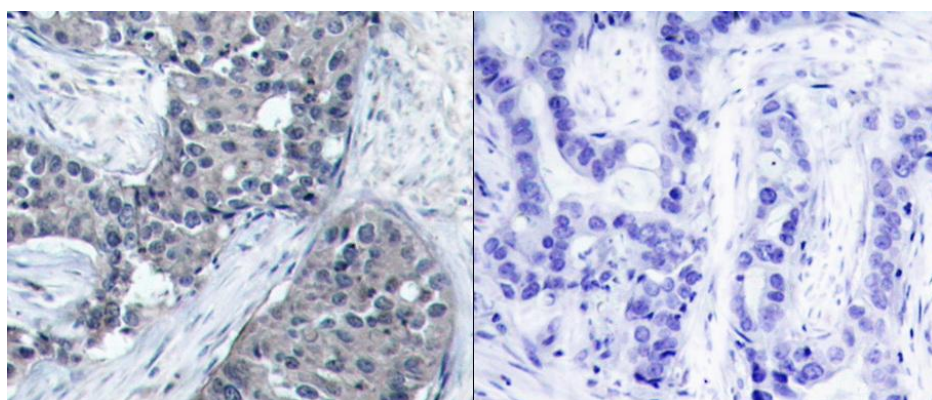
Product Type:	Primary Antibodies
Applications:	IF, IHC, WB
Recommended Dilution:	WB: 1:500-1000, IHC: 1:50-100, IF: 1:100-200
Reactivity:	Human
Modifications:	Phospho-specific
Host:	Rabbit
Isotype:	IgG
Clonality:	Polyclonal
Immunogen:	Peptide sequence around phosphorylation site of serine 209 (S-G-S(p)-T-T) derived from Human eIF4E.
Formulation:	PBS pH7.3, 0.05% NaN ₃ , 50% glycerol
Concentration:	lot specific
Purification:	Antigen affinity purification
Conjugation:	Unconjugated
Storage:	Store at -20°C as received.
Stability:	Stable for 12 months from date of receipt.
Predicted Protein Size:	25 kDa
Gene Name:	eukaryotic translation initiation factor 4E
Database Link:	NP_001959 Entrez Gene 1977 Human P06730
Background:	Recognizes and binds the 7-methylguanosine-containing mRNA cap during an early step in the initiation of protein synthesis and facilitates ribosome binding by inducing the unwinding of the mRNAs secondary structures.
Synonyms:	AUTS19; CBP; eIF-4E; EIF4E1; EIF4EL1; EIF4F
Protein Pathways:	Insulin signaling pathway, mTOR signaling pathway



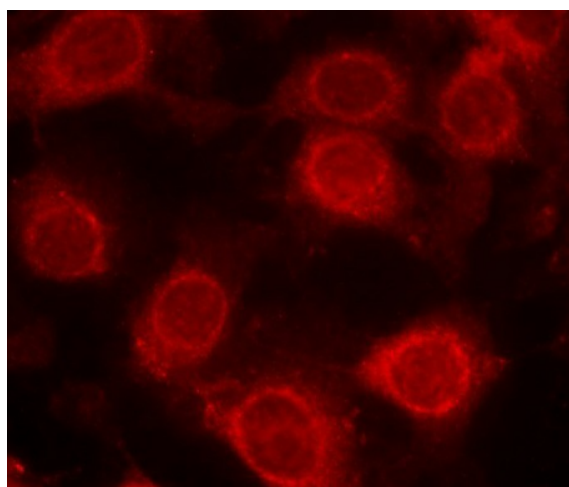
[View online »](#)

Product images:


Predicted band size: 25 kDa. Positive control: HT29 cells treated with Anisomycin lysate. Recommended dilution: 1/ 500-1000. (Gel: 10%SDS-PAGE Lane 1: HT29 cells untreated with Anisomycin lysate Lane 2: HT29 cells treated with Anisomycin lysate Lysates: 30 ug per lane Primary antibody: 1/500 dilution Secondary antibody: Goat anti Rabbit IgG - H&L (HRP) at 1/10000 dilution Exposure time: 1 minute)



Predicted cell location: Cytoplasm. Positive control: Human breast carcinoma tissue. Recommended dilution: 1/ 50-100 The image on the left is immunohistochemistry of paraffin-embedded human breast carcinoma tissue using EIF4E (Phospho-Ser209) antibody at dilution 1/50, on the right is treated with the synthetic peptide. (Original magnification:x200)



Predicted cell location: Cytoplasm. Positive control: MCF cells. Recommended dilution: 1/ 100-200.The image is immunofluorescence of methanol-fixed MCF cells using EIF4E (Phospho-Ser209) antibody at dilution 1/100. (Original magnification:x200)