

Product datasheet for **TA323836**

SLC8A3 Rabbit Polyclonal Antibody

Product data:

Product Type:	Primary Antibodies
Applications:	IHC
Recommended Dilution:	IHC: 100-300 Positive control: Human lung cancer Predicted cell location: Cytoplasm, Nucleus
Reactivity:	Human
Host:	Rabbit
Isotype:	IgG
Clonality:	Polyclonal
Immunogen:	Synthetic peptide corresponding to a region derived from 33-47 amino acids of Human solute carrier family 8 (sodium/calcium exchanger), member 3
Formulation:	PBS pH7.3, 0.05% NaN ₃ , 50% glycerol
Concentration:	lot specific
Purification:	Antigen affinity purification
Conjugation:	Unconjugated
Storage:	Store at -20°C as received.
Stability:	Stable for 12 months from date of receipt.
Gene Name:	solute carrier family 8 member A3
Database Link:	NP_891978 Entrez Gene 6547 Human P57103
Background:	This gene encodes a member of the sodium/calcium exchanger integral membrane protein family. Three mammalian isoforms in family 8 have been identified. Na ⁺ /Ca ²⁺ exchange proteins are involved in maintaining Ca ²⁺ homeostasis in a wide variety of cell types. The protein is regulated by intracellular calcium ions and is found in both the plasma membrane and intracellular organellar membranes; where exchange of Na ⁺ for Ca ²⁺ occurs in an electrogenic manner. Alternative splicing has been observed for this gene and multiple variants have been described.



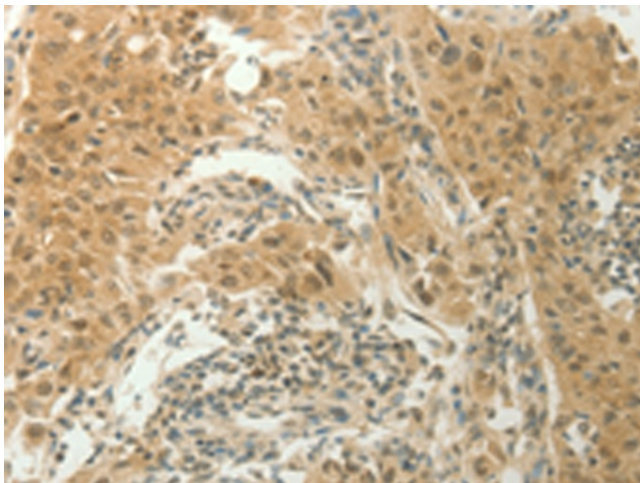
[View online »](#)

Synonyms: Ca(2+)-exchange protein 3; Ca²⁺ exchanger 3; calcium exchan; calcium exchanger SLC8A3; member 3; Na(+); Na+; NCX3; OTTHUMP00000179116; sodium; sodium-calcium exchanger form 3; solute carrier family 8 (sodium; solute carrier family 8 (sodium-calcium exchanger)

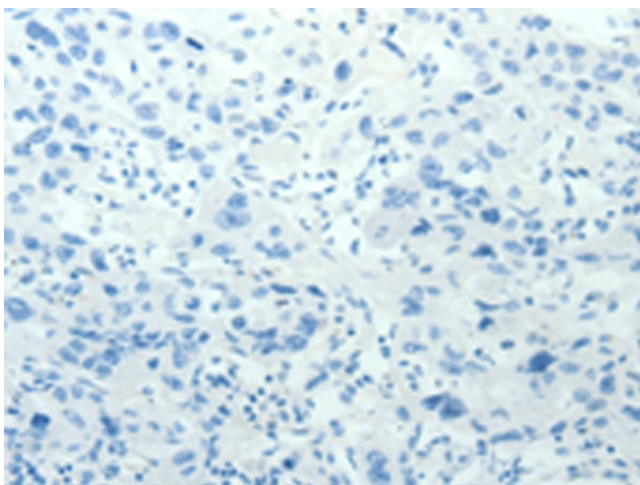
Protein Families: Transmembrane

Protein Pathways: Calcium signaling pathway

Product images:



Immunohistochemistry of paraffin-embedded Human lung cancer tissue using TA323836 (SLC8A3 Antibody) at dilution 1/70 (Original magnification: ×200)



Immunohistochemistry of paraffin-embedded Human lung cancer tissue using TA323836 (SLC8A3 Antibody) at dilution 1/70, treated with synthetic peptide. (Original magnification: ×200)