

Product datasheet for **TA323831S**

SLC9A3R2 Rabbit Polyclonal Antibody

Product data:

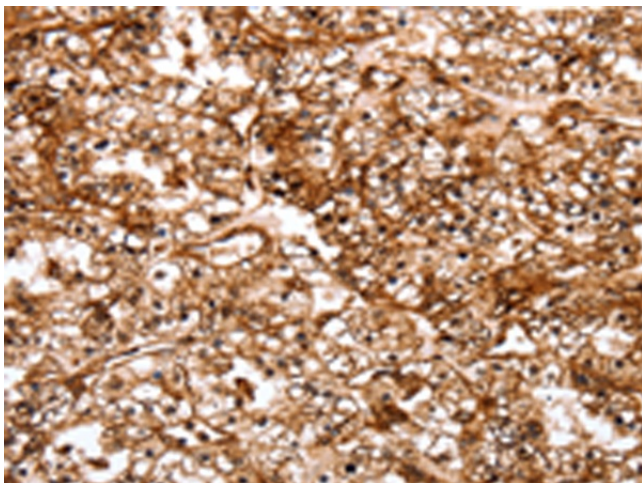
Product Type:	Primary Antibodies
Applications:	IHC
Recommended Dilution:	IHC: 50-200 Positive control: Human renal cancer Predicted cell location: Cytoplasm, Endomembrane system, Peripheral membrane protein
Reactivity:	Human, Mouse, Rat
Host:	Rabbit
Isotype:	IgG
Clonality:	Polyclonal
Immunogen:	Synthetic peptide corresponding to a region derived from 275-289amino acids of human solute carrier family 9, subfamily A (NHE3, cation proton antiporter 3), member 3 regulator 2
Formulation:	PBS pH7.3, 0.05% NaN ₃ , 50% glycerol
Purification:	Antigen affinity purification
Conjugation:	Unconjugated
Storage:	Store at -20°C as received.
Stability:	Stable for 12 months from date of receipt.
Gene Name:	SLC9A3 regulator 2
Database Link:	NP_004776 Entrez Gene 65962 Mouse Entrez Gene 116501 Rat Entrez Gene 9351 Human Q15599
Background:	This gene encodes a member of the NHERF family of PDZ scaffolding proteins. These proteins mediate many cellular processes by binding to and regulating the membrane expression and protein-protein interactions of membrane receptors and transport proteins. The encoded protein plays a role in intestinal sodium absorption by regulating the activity of the sodium/hydrogen exchanger 3; and may also regulate the cystic fibrosis transmembrane regulator (CFTR) ion channel. Alternatively spliced transcript variants encoding multiple isoforms have been observed for this gene.
Synonyms:	E3KARP; NHE3RF2; NHERF-2; NHERF2; OCTS2; SIP-1; SIP1; TKA-1



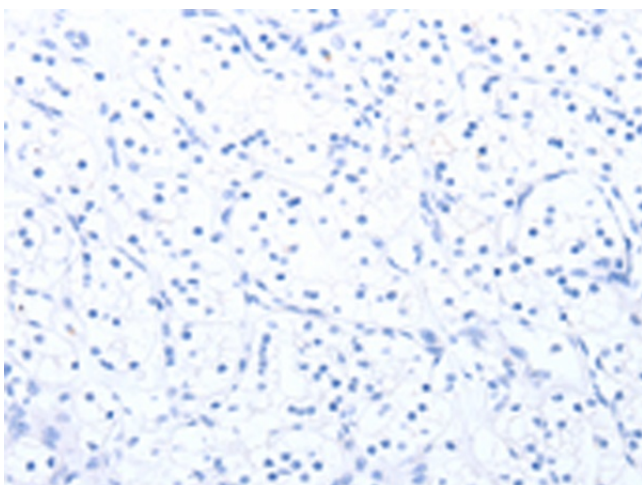
[View online »](#)

Protein Families: Druggable Genome

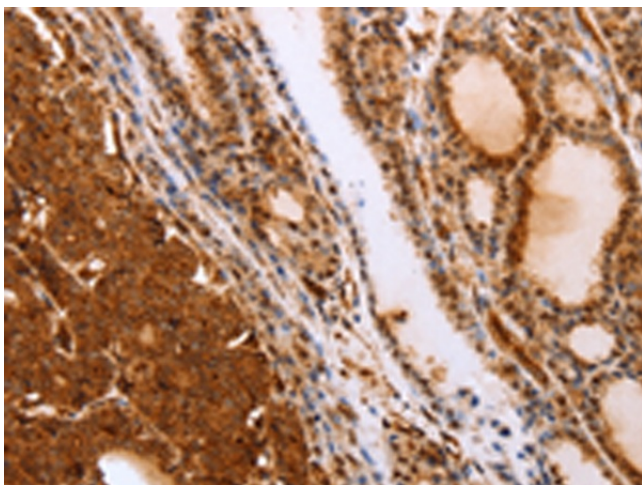
Product images:



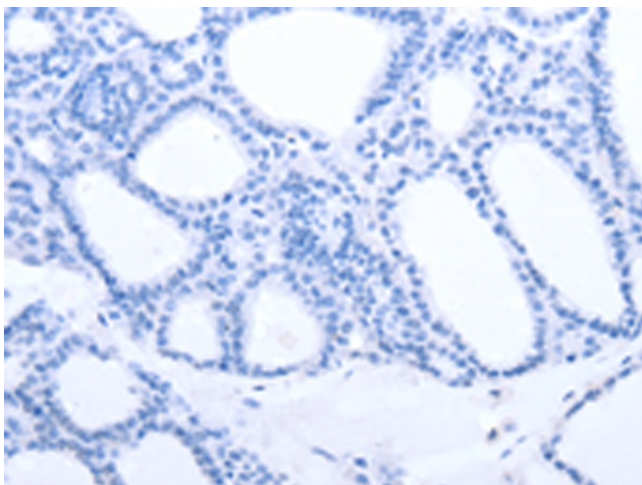
Immunohistochemistry of paraffin-embedded Human renal cancer tissue using [TA323831] (SLC9A3R2 Antibody) at dilution 1/40 (Original magnification: $\times 200$)



Immunohistochemistry of paraffin-embedded Human renal cancer tissue using [TA323831] (SLC9A3R2 Antibody) at dilution 1/40, treated with synthetic peptide. (Original magnification: $\times 200$)



Immunohistochemistry of paraffin-embedded Human thyroid cancer tissue using [TA323831] (SLC9A3R2 Antibody) at dilution 1/40 (Original magnification: $\times 200$)



Immunohistochemistry of paraffin-embedded Human thyroid cancer tissue using [TA323831] (SLC9A3R2 Antibody) at dilution 1/40, treated with synthetic peptide. (Original magnification: $\times 200$)