

## Product datasheet for **TA323831**

### SLC9A3R2 Rabbit Polyclonal Antibody

#### Product data:

|                       |  |
|-----------------------|--|
| Product Type:         | Primary Antibodies   |
| Applications:         | IHC  |
| Recommended Dilution: | IHC: 50-200<br>Positive control: Human renal cancer<br>Predicted cell location: Cytoplasm, Endomembrane system, Peripheral membrane protein  |
| Reactivity:           | Human, Mouse, Rat  |
| Host:                 | Rabbit   |
| Isotype:              | IgG  |
| Clonality:            | Polyclonal   |
| Immunogen:            | Synthetic peptide corresponding to a region derived from 275-289amino acids of human solute carrier family 9, subfamily A (NHE3, cation proton antiporter 3), member 3 regulator 2 |
| Formulation:          | PBS pH7.3, 0.05% NaN <sub>3</sub> , 50% glycerol   |
| Concentration:        | lot specific   |
| Purification:         | Antigen affinity purification  |
| Conjugation:          | Unconjugated   |
| Storage:              | Store at -20°C as received.  |
| Stability:            | Stable for 12 months from date of receipt.   |
| Gene Name:            | SLC9A3 regulator 2   |
| Database Link:        | <a href="#">NP_004776</a><br><a href="#">Entrez Gene 65962 MouseEntrez Gene 116501 RatEntrez Gene 9351 Human Q15599</a>  |

**Background:** This gene encodes a member of the NHERF family of PDZ scaffolding proteins. These proteins mediate many cellular processes by binding to and regulating the membrane expression and protein-protein interactions of membrane receptors and transport proteins. The encoded protein plays a role in intestinal sodium absorption by regulating the activity of the sodium/hydrogen exchanger 3; and may also regulate the cystic fibrosis transmembrane regulator (CFTR) ion channel. Alternatively spliced transcript variants encoding multiple isoforms have been observed for this gene.

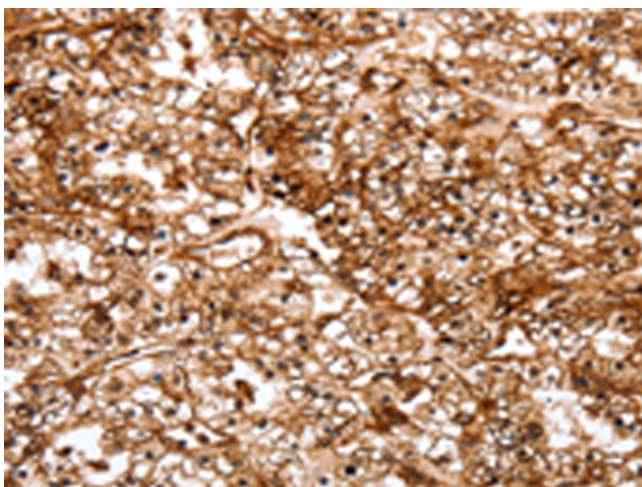


[View online »](#)

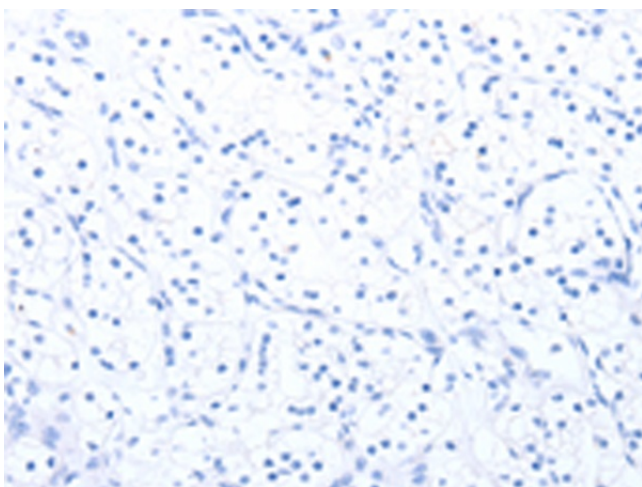
**Synonyms:** E3KARP; NHE3RF2; NHERF-2; NHERF2; OCTS2; SIP-1; SIP1; TKA-1

**Protein Families:** Druggable Genome

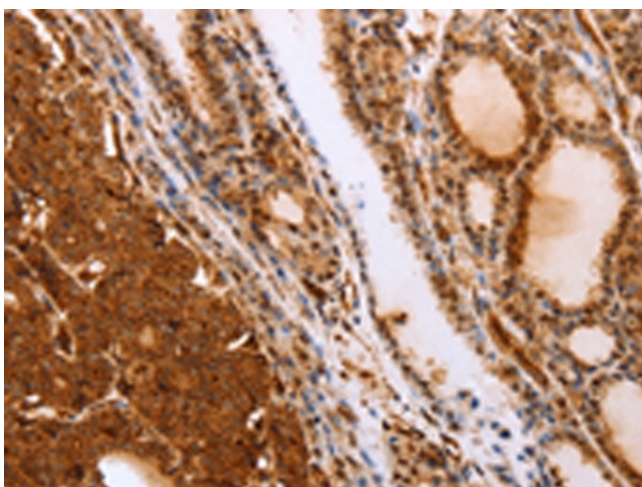
**Product images:**



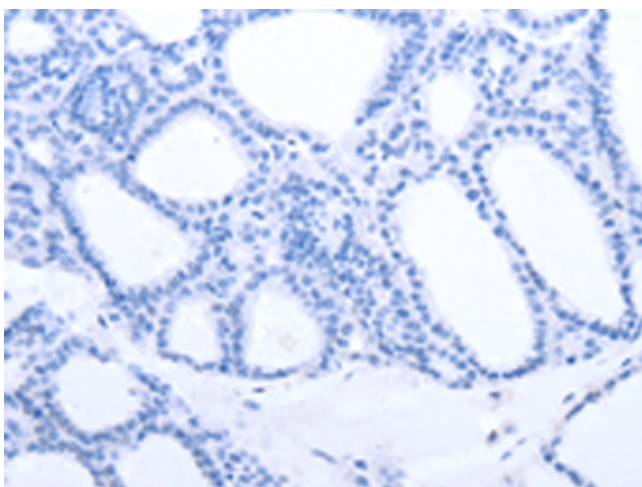
Immunohistochemistry of paraffin-embedded Human renal cancer tissue using TA323831 (SLC9A3R2 Antibody) at dilution 1/40 (Original magnification:  $\times 200$ )



Immunohistochemistry of paraffin-embedded Human renal cancer tissue using TA323831 (SLC9A3R2 Antibody) at dilution 1/40, treated with synthetic peptide. (Original magnification:  $\times 200$ )



Immunohistochemistry of paraffin-embedded Human thyroid cancer tissue using TA323831 (SLC9A3R2 Antibody) at dilution 1/40 (Original magnification:  $\times 200$ )



Immunohistochemistry of paraffin-embedded Human thyroid cancer tissue using TA323831 (SLC9A3R2 Antibody) at dilution 1/40, treated with synthetic peptide. (Original magnification:  $\times 200$ )