

Product datasheet for **TA323829S**

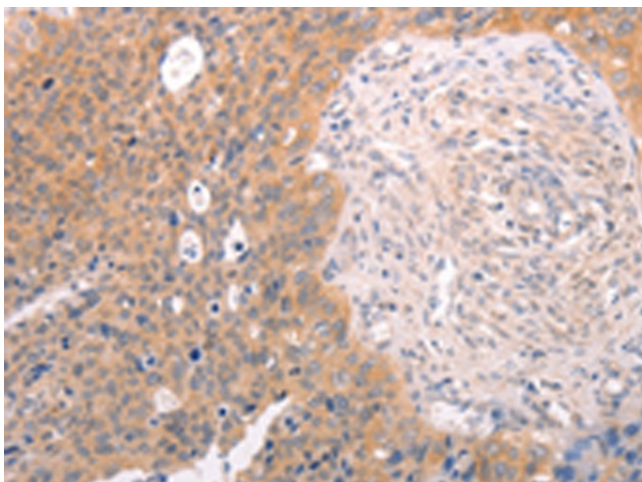
TRP2 (DCT) Rabbit Polyclonal Antibody

Product data:

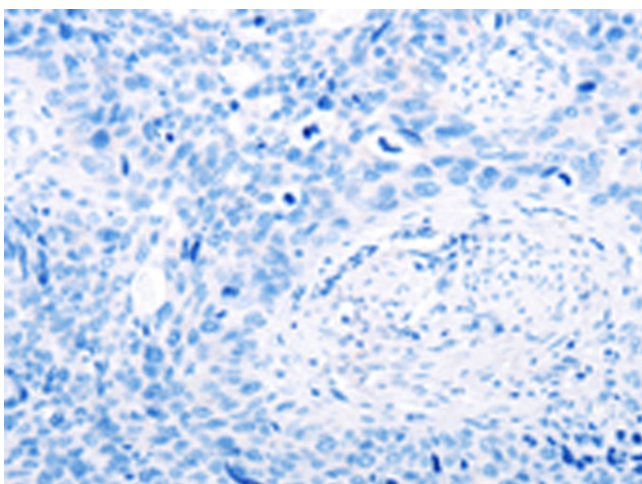
| | |
|-----------------------|--|
| Product Type: | Primary Antibodies |
| Applications: | IHC |
| Recommended Dilution: | IHC: 25-100 Positive control: Human cervical cancer Predicted cell location: Cytoplasm |
| Reactivity: | Human, Mouse |
| Host: | Rabbit |
| Isotype: | IgG |
| Clonality: | Polyclonal |
| Immunogen: | Fusion protein corresponding to a region derived from 222-472 amino acids of human dopachrome tautomerase |
| Formulation: | PBS pH7.3, 0.05% NaN ₃ , 50% glycerol |
| Purification: | Antigen affinity purification |
| Conjugation: | Unconjugated |
| Storage: | Store at -20°C as received. |
| Stability: | Stable for 12 months from date of receipt. |
| Gene Name: | dopachrome tautomerase |
| Database Link: | NP_001913 Entrez Gene 13190 Mouse Entrez Gene 1638 Human P40126 |
| Background: | This protein can involved in regulating eumelanin and phaeomelanin levels. The subcellular location of this protein is melanosome membrane; Single-pass type I membrane protein. It may form a multienzyme complex together with Tyrosinase and TYRP1. |
| Synonyms: | TRP-2; TYRP2 |
| Protein Families: | Transmembrane |
| Protein Pathways: | Melanogenesis, Metabolic pathways, Tyrosine metabolism |



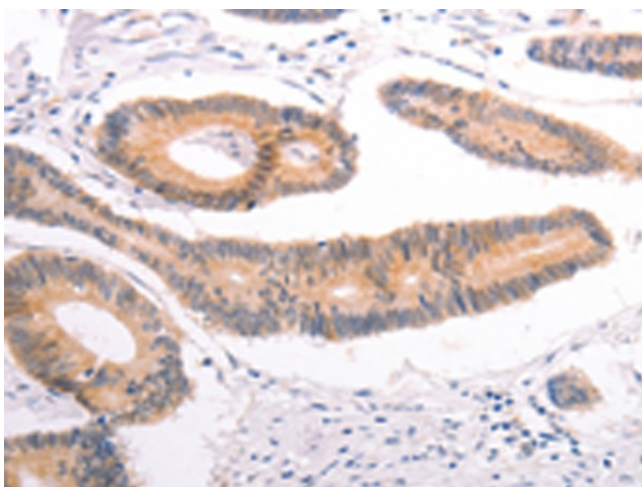
[View online »](#)

Product images:

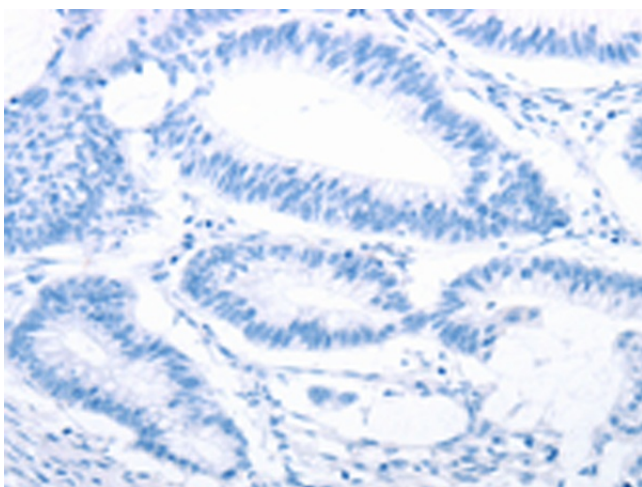
Immunohistochemistry of paraffin-embedded Human cervical cancer tissue using [TA323829] (DCT Antibody) at dilution 1/25 (Original magnification: $\times 200$)



Immunohistochemistry of paraffin-embedded Human cervical cancer tissue using [TA323829] (DCT Antibody) at dilution 1/25, treated with fusion protein. (Original magnification: $\times 200$)



Immunohistochemistry of paraffin-embedded Human colon cancer tissue using [TA323829] (DCT Antibody) at dilution 1/25 (Original magnification: $\times 200$)



Immunohistochemistry of paraffin-embedded Human colon cancer tissue using [TA323829] (DCT Antibody) at dilution 1/25, treated with fusion protein. (Original magnification: $\times 200$)