

Product datasheet for **TA323829**

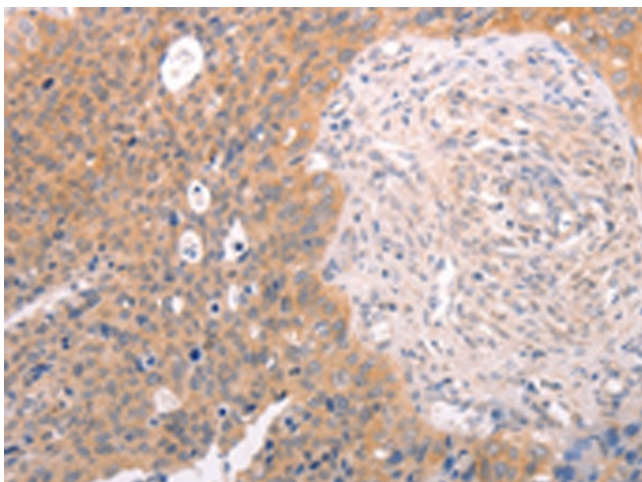
TRP2 (DCT) Rabbit Polyclonal Antibody

Product data:

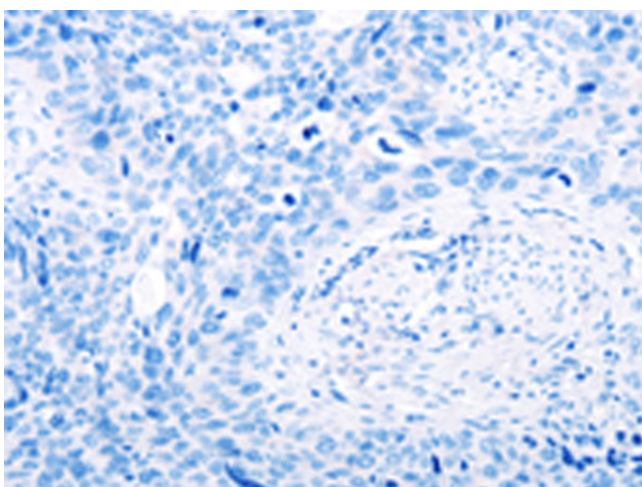
Product Type:	Primary Antibodies
Applications:	IHC
Recommended Dilution:	IHC: 25-100 Positive control: Human cervical cancer Predicted cell location: Cytoplasm
Reactivity:	Human, Mouse
Host:	Rabbit
Isotype:	IgG
Clonality:	Polyclonal
Immunogen:	Fusion protein corresponding to a region derived from 222-472 amino acids of human dopachrome tautomerase
Formulation:	PBS pH7.3, 0.05% NaN ₃ , 50% glycerol
Concentration:	lot specific
Purification:	Antigen affinity purification
Conjugation:	Unconjugated
Storage:	Store at -20°C as received.
Stability:	Stable for 12 months from date of receipt.
Gene Name:	dopachrome tautomerase
Database Link:	NP_001913 Entrez Gene 13190 Mouse Entrez Gene 1638 Human P40126
Background:	This protein can involved in regulating eumelanin and phaeomelanin levels. The subcellular location of this protein is melanosome membrane; Single-pass type I membrane protein. It may form a multienzyme complex together with Tyrosinase and TYRP1.
Synonyms:	TRP-2; TYRP2
Protein Families:	Transmembrane
Protein Pathways:	Melanogenesis, Metabolic pathways, Tyrosine metabolism



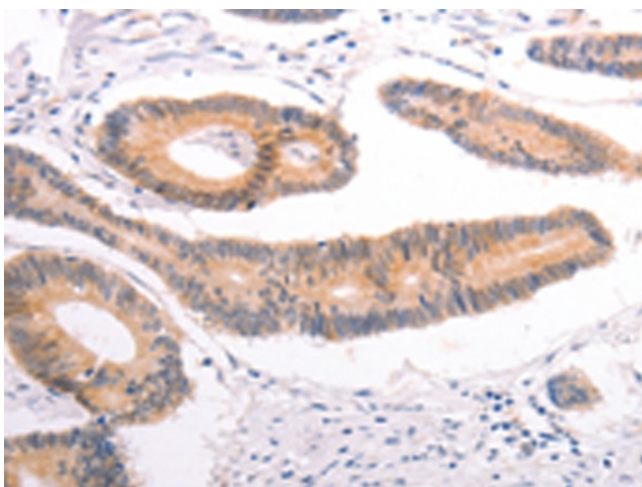
[View online »](#)

Product images:

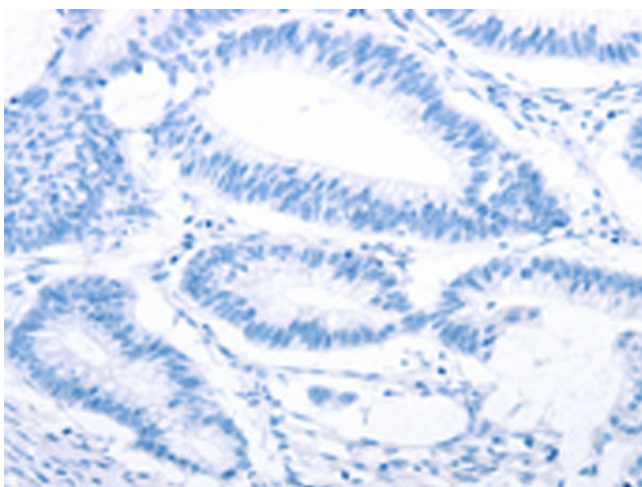
Immunohistochemistry of paraffin-embedded Human cervical cancer tissue using TA323829 (DCT Antibody) at dilution 1/25 (Original magnification: $\times 200$)



Immunohistochemistry of paraffin-embedded Human cervical cancer tissue using TA323829 (DCT Antibody) at dilution 1/25, treated with fusion protein. (Original magnification: $\times 200$)



Immunohistochemistry of paraffin-embedded Human colon cancer tissue using TA323829 (DCT Antibody) at dilution 1/25 (Original magnification: $\times 200$)



Immunohistochemistry of paraffin-embedded Human colon cancer tissue using TA323829 (DCT Antibody) at dilution 1/25, treated with fusion protein. (Original magnification: $\times 200$)