

Product datasheet for **TA323828**

TRP2 (DCT) Rabbit Polyclonal Antibody

Product data:

Product Type:	Primary Antibodies
Applications:	IHC, WB
Recommended Dilution:	WB: 500-2000 WB positive control: Human liver cancer and fetal liver tissue IHC: 50-200 Positive control: Human cervical cancer Predicted cell location: Cytoplasm
Reactivity:	Human, Mouse
Host:	Rabbit
Isotype:	IgG
Clonality:	Polyclonal
Immunogen:	Fusion protein corresponding to a region derived from 222-472 amino acids of human dopachrome tautomerase
Formulation:	PBS pH7.3, 0.05% NaN ₃ , 50% glycerol
Concentration:	lot specific
Purification:	Antigen affinity purification
Conjugation:	Unconjugated
Storage:	Store at -20°C as received.
Stability:	Stable for 12 months from date of receipt.
Predicted Protein Size:	59 kDa
Gene Name:	dopachrome tautomerase
Database Link:	NP_001123361 Entrez Gene 13190 Mouse Entrez Gene 1638 Human P40126



[View online »](#)

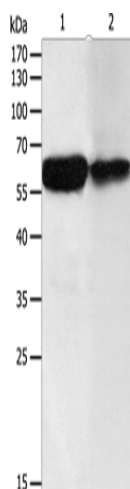
Background: Dopachrome tautomerase (dopachrome delta-isomerase; tyrosine-related protein 2); also known as DCT; is a human gene. The human TYRP2 protein has 83% identity and 90% similarity to the mouse sequence and has all the structural characteristics of the tyrosinase protein family; including a signal peptide; 15 conserved cysteine residues; 2 copper-binding domains; and a C-terminal membrane-spanning region. Northern blot analysis showed that TYRP2 is expressed at high levels in human melanoma cells. Its expression is regulated by the microphthalmia-associated transcription factor (MITF).

Synonyms: TRP-2; TYRP2

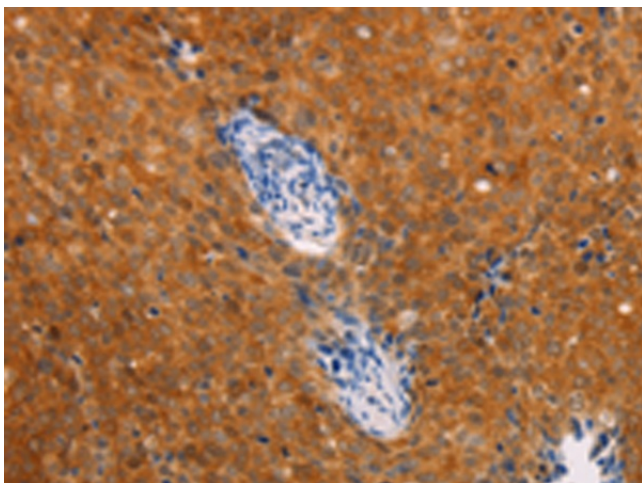
Protein Families: Transmembrane

Protein Pathways: Melanogenesis, Metabolic pathways, Tyrosine metabolism

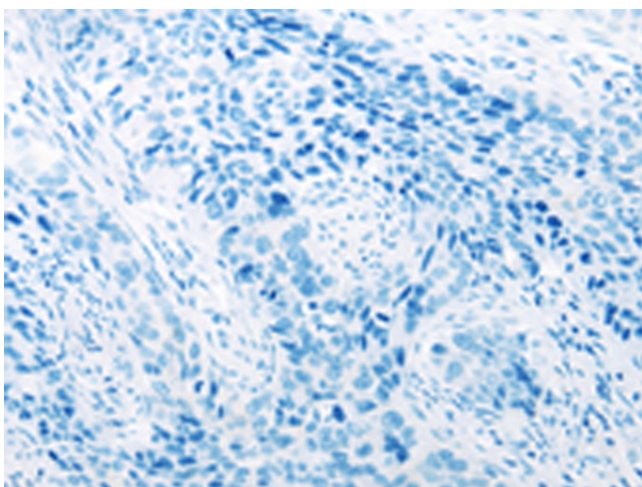
Product images:



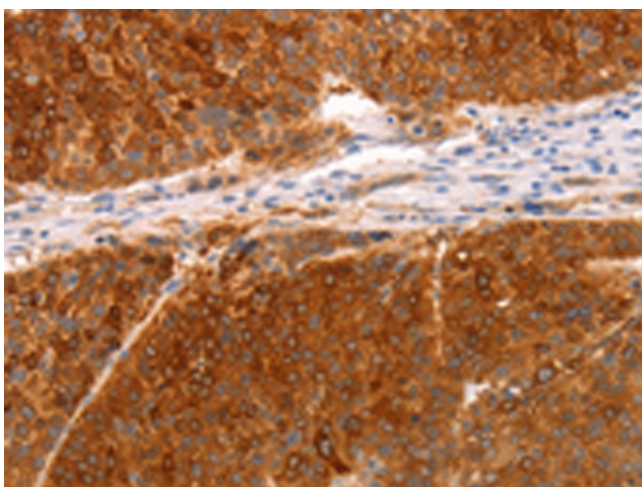
Gel: 12%SDS-PAGE
Lysate: 50 µg
Lane 1-2: Human liver cancer tissue
Human fetal liver tissue
Primary antibody: TA323828 (DCT Antibody) at dilution 1/200
Secondary antibody: Goat anti rabbit IgG at 1/8000 dilution
Exposure time: 5 minutes



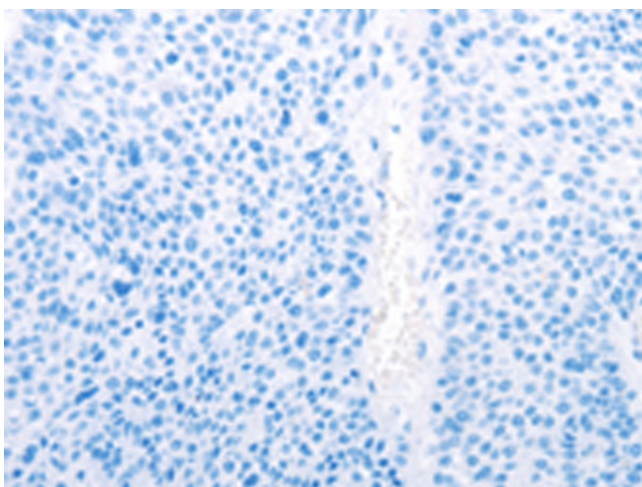
Immunohistochemistry of paraffin-embedded Human cervical cancer tissue using TA323828 (DCT Antibody) at dilution 1/25 (Original magnification: ×200)



Immunohistochemistry of paraffin-embedded Human cervical cancer tissue using TA323828 (DCT Antibody) at dilution 1/25, treated with fusion protein. (Original magnification: $\times 200$)



Immunohistochemistry of paraffin-embedded Human liver cancer tissue using TA323828 (DCT Antibody) at dilution 1/25 (Original magnification: $\times 200$)



Immunohistochemistry of paraffin-embedded Human liver cancer tissue using TA323828 (DCT Antibody) at dilution 1/25, treated with fusion protein. (Original magnification: $\times 200$)