

Product datasheet for **TA323827**

PATE3 Rabbit Polyclonal Antibody

Product data:

Product Type:	Primary Antibodies
Applications:	WB
Recommended Dilution:	WB: 1:500-2000
Reactivity:	Human, Mouse, Rat
Host:	Rabbit
Isotype:	IgG
Clonality:	Polyclonal
Immunogen:	Full length fusion protein
Formulation:	PBS pH7.3, 0.05% NaN ₃ , 50% glycerol
Concentration:	lot specific
Purification:	Antigen affinity purification
Conjugation:	Unconjugated
Storage:	Store at -20°C as received.
Stability:	Stable for 12 months from date of receipt.
Predicted Protein Size:	12 kDa
Gene Name:	prostate and testis expressed 3
Database Link:	NP_001123355 Entrez Gene 100312956 Mouse Entrez Gene 100361414 Rat Entrez Gene 100169851 Human B3GLJ2



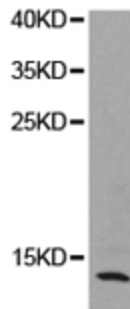
[View online »](#)

Background:

PATE3 (prostate and testis expressed protein 3), also known as PATE-DJ or HEL-127, is a 98 amino acid protein that contains one UPAR/Ly6 domain and belongs to the PATE family. PATE3 is a secreted protein that is expressed in prostate and testis. The gene that encodes PATE3 consists of around 3,490 bases and maps to human chromosome 11p15.5. Chromosome 11, which comprises approximately 4% of the human genome, is considered a gene and disease association-dense chromosome. The chromosome 11 encoded Atm gene is important for regulation of cell cycle arrest and apoptosis following double strand DNA breaks. Atm mutation leads to the disorder known as ataxia-telangiectasia. The blood disorders Sickle cell anemia and thalassemia are caused by HBB gene mutations, while Wilms' tumors, WAGR syndrome and Denys-Drash syndrome are associated with mutations of the WT1 gene. Jervell and Lange-Nielsen syndrome, Jacobsen syndrome, Niemann-Pick disease, hereditary angioedema and Smith-Lemli-Opitz syndrome are also associated with defects in chromosome 11-encoded genes.

Synonyms:

HEL-127; PATE-DJ

Product images:

Predicted band size: 12 kDa. Positive control: HeLa cell lysate. Recommended dilution: 1/500-2000. (Gel: 12%SDS-PAGE Lysate: 40 ug Primary antibody: 1/500 dilution Secondary antibody: Goat anti Rabbit IgG - H&L (HRP) at 1/10000 dilution Exposure time: 1 minute)