

Product datasheet for **TA323823**

PAK1 Rabbit Polyclonal Antibody

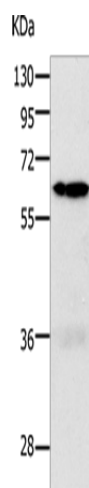
Product data:

Product Type:	Primary Antibodies
Applications:	IHC, WB
Recommended Dilution:	WB: 500-2000 WB positive control: 293T and K562 cells IHC: 25-100 Positive control: Human liver cancer Predicted cell location: Cytoplasm
Reactivity:	Human, Mouse, Rat
Host:	Rabbit
Isotype:	IgG
Clonality:	Polyclonal
Immunogen:	Synthetic peptide corresponding to a region derived from 225-238 amino acids of Human p21 protein (Cdc42/Rac)-activated kinase
Formulation:	PBS pH7.3, 0.05% NaN ₃ , 50% glycerol
Concentration:	lot specific
Purification:	Antigen affinity purification
Conjugation:	Unconjugated
Storage:	Store at -20°C as received.
Stability:	Stable for 12 months from date of receipt.
Predicted Protein Size:	61 kDa
Gene Name:	p21 (RAC1) activated kinase 1
Database Link:	NP_001122092 Entrez Gene 18479 Mouse Entrez Gene 29431 Rat Entrez Gene 5058 Human Q13153

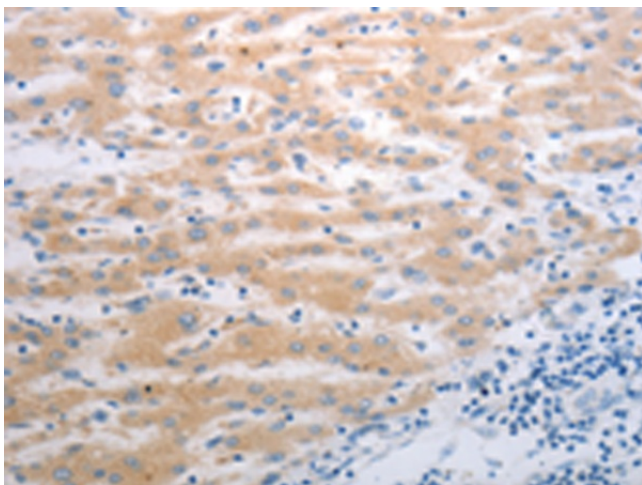


[View online »](#)

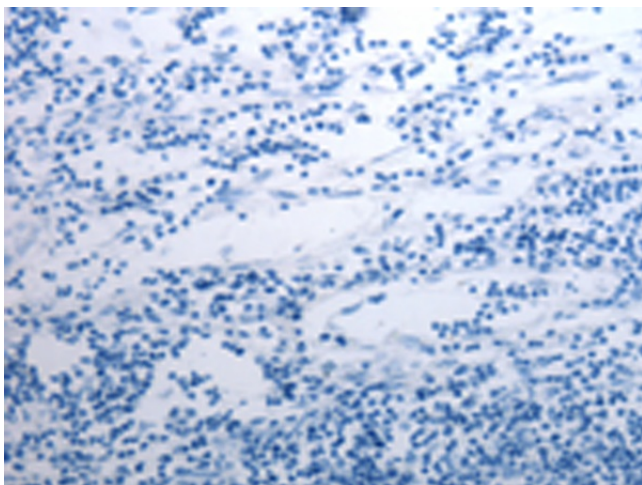
Background:	This gene encodes a family member of serine/threonine p21-activating kinases; known as PAK proteins. These proteins are critical effectors that link RhoGTPases to cytoskeleton reorganization and nuclear signaling; and they serve as targets for the small GTP binding proteins Cdc42 and Rac. This specific family member regulates cell motility and morphology. Alternatively spliced transcript variants encoding different isoforms have been found for this gene.?
Synonyms:	PAKalpha
Protein Families:	Druggable Genome, Protein Kinase, Stem cell - Pluripotency
Protein Pathways:	Axon guidance, Chemokine signaling pathway, Epithelial cell signaling in Helicobacter pylori infection, ErbB signaling pathway, Fc gamma R-mediated phagocytosis, Focal adhesion, MAPK signaling pathway, Natural killer cell mediated cytotoxicity, Regulation of actin cytoskeleton, Renal cell carcinoma, T cell receptor signaling pathway

Product images:

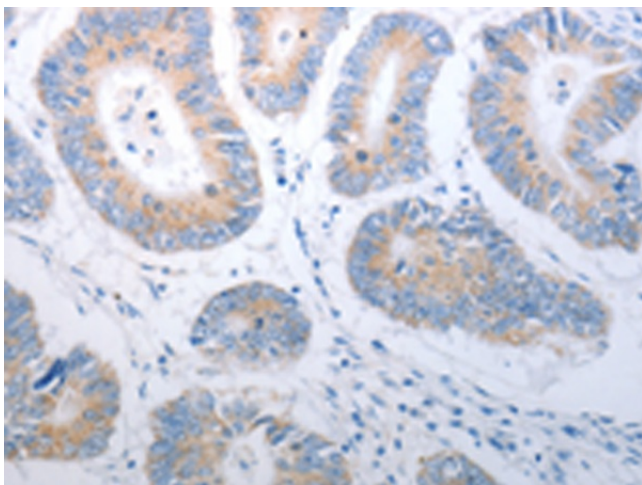
Gel: 10%SDS-PAGE
Lysate: 40 µg
Lane 1-2: 293T cells
K562 cells
Primary antibody: TA323823 (PAK1 Antibody) at dilution 1/700
Secondary antibody: Goat anti rabbit IgG at 1/8000 dilution
Exposure time: 1 minute



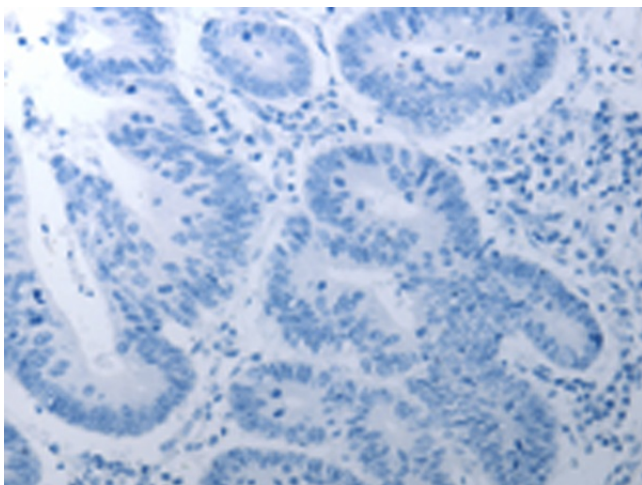
Immunohistochemistry of paraffin-embedded Human liver cancer tissue using TA323823 (PAK1 Antibody) at dilution 1/40 (Original magnification: $\times 200$)



Immunohistochemistry of paraffin-embedded Human liver cancer tissue using TA323823 (PAK1 Antibody) at dilution 1/40, treated with synthetic peptide. (Original magnification: $\times 200$)



Immunohistochemistry of paraffin-embedded Human colon cancer tissue using TA323823 (PAK1 Antibody) at dilution 1/40 (Original magnification: $\times 200$)



Immunohistochemistry of paraffin-embedded Human colon cancer tissue using TA323823 (PAK1 Antibody) at dilution 1/40, treated with synthetic peptide. (Original magnification: $\times 200$)