

Product datasheet for **TA323820S**

STXBP2 Rabbit Polyclonal Antibody

Product data:

Product Type:	Primary Antibodies
Applications:	IHC, WB
Recommended Dilution:	WB: 200-1000 WB positive control: A549 cells, human liver cancer tissue and Hela cells IHC: 25-100 Positive control: Human lung cancer Predicted cell location: Cytoplasm
Reactivity:	Human, Mouse, Rat
Host:	Rabbit
Isotype:	IgG
Clonality:	Polyclonal
Immunogen:	Fusion protein corresponding to C terminal 250 amino acids of human syntaxin binding protein 2
Formulation:	PBS pH7.3, 0.05% NaN ₃ , 50% glycerol
Purification:	Antigen affinity purification
Conjugation:	Unconjugated
Storage:	Store at -20°C as received.
Stability:	Stable for 12 months from date of receipt.
Predicted Protein Size:	66 kDa
Gene Name:	syntaxin binding protein 2
Database Link:	NP_001120868 Entrez Gene 20911 Mouse Entrez Gene 81804 Rat Entrez Gene 6813 Human Q15833



[View online »](#)

Background:

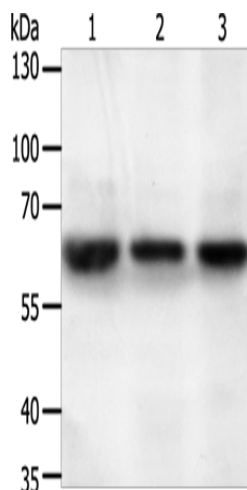
This gene encodes a member of the STXBP/unc-18/SEC1 family. The encoded protein is involved in intracellular trafficking; control of SNARE (soluble NSF attachment protein receptor) complex assembly; and the release of cytotoxic granules by natural killer cells. Mutations in this gene are associated with familial hemophagocytic lymphohistiocytosis. Alternatively spliced transcript variants encoding different isoforms have been noted for this gene.

Synonyms:

FHL5; Hunc18b; MUNC18-2; pp10122; UNC18-2; UNC18B

Protein Families:

Stem cell - Pluripotency

Product images:

Gel: 10%SDS-PAGE

Lysate: 50 μ g

Lane 1-3: A549 cells

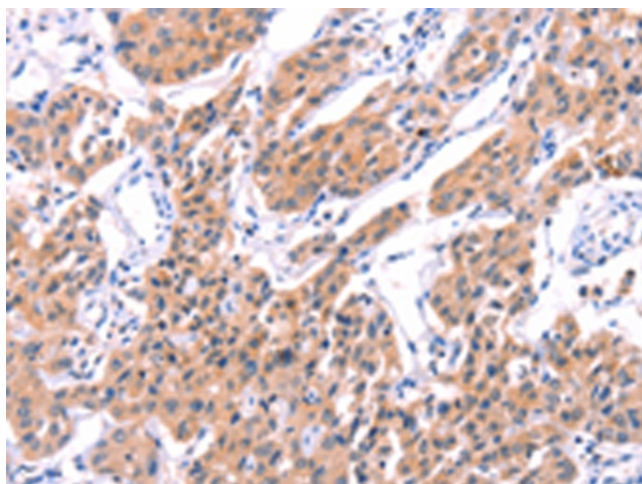
human liver cancer tissue

HeLa cells

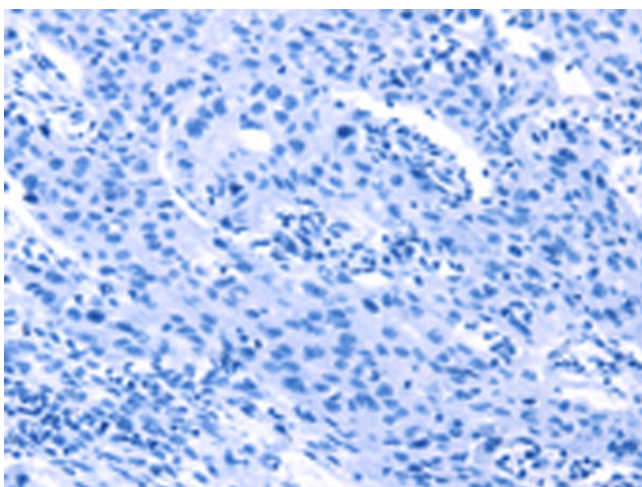
Primary antibody: [TA323820] (STXBP2 Antibody) at dilution 1/200

Secondary antibody: Goat anti rabbit IgG at 1/8000 dilution

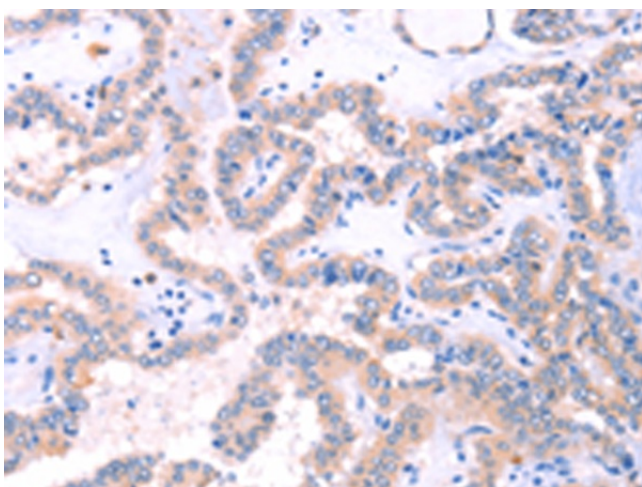
Exposure time: 40 seconds



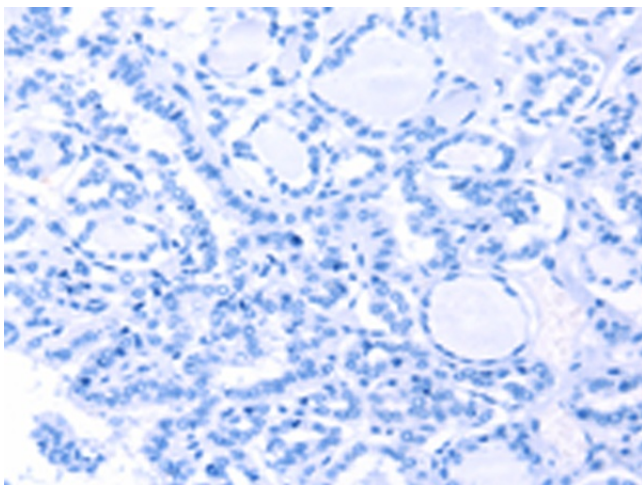
Immunohistochemistry of paraffin-embedded Human lung cancer tissue using [TA323820] (STXBP2 Antibody) at dilution 1/20 (Original magnification: $\times 200$)



Immunohistochemistry of paraffin-embedded Human lung cancer tissue using [TA323820] (STXBP2 Antibody) at dilution 1/20, treated with fusion protein. (Original magnification: $\times 200$)



Immunohistochemistry of paraffin-embedded Human thyroid cancer tissue using [TA323820] (STXBP2 Antibody) at dilution 1/20 (Original magnification: $\times 200$)



Immunohistochemistry of paraffin-embedded Human thyroid cancer tissue using [TA323820] (STXBP2 Antibody) at dilution 1/20, treated with fusion protein. (Original magnification: $\times 200$)