

Product datasheet for **TA323817**

HP1 alpha (CBX5) Rabbit Polyclonal Antibody

Product data:

Product Type:	Primary Antibodies
Applications:	WB
Recommended Dilution:	WB: 1000-5000 WB positive control: Jurkat and Raji cell lysates
Reactivity:	Human, Mouse
Host:	Rabbit
Isotype:	IgG
Clonality:	Polyclonal
Immunogen:	Full length fusion protein
Formulation:	PBS pH7.3, 0.05% NaN ₃ , 50% glycerol
Concentration:	lot specific
Purification:	Antigen affinity purification
Conjugation:	Unconjugated
Storage:	Store at -20°C as received.
Stability:	Stable for 12 months from date of receipt.
Predicted Protein Size:	22 kDa
Gene Name:	chromobox 5
Database Link:	NP_001120793 Entrez Gene 12419 Mouse Entrez Gene 23468 Human P45973



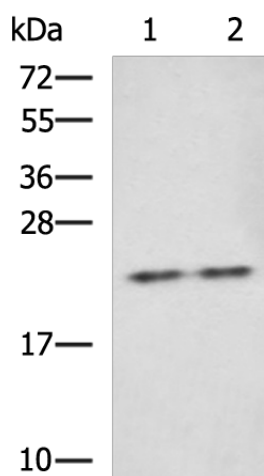
[View online »](#)

Background:

This gene encodes a highly conserved nonhistone protein; which is a member of the heterochromatin protein family. The protein is enriched in the heterochromatin and associated with centromeres. The protein has a single N-terminal chromodomain which can bind to histone proteins via methylated lysine residues; and a C-terminal chromo shadow-domain (CSD) which is responsible for the homodimerization and interaction with a number of chromatin-associated nonhistone proteins. The encoded product is involved in the formation of functional kinetochore through interaction with essential kinetochore proteins. The gene has a pseudogene located on chromosome 3. Multiple alternatively spliced variants; encoding the same protein; have been identified.

Synonyms:

HEL25; HP1; HP1A

Product images:

Gel: 12%SDS-PAGE

Lysate: 40 µg

Lane 1-2: Jurkat and Raji cell lysates

Primary antibody: TA323817 (CBX5 Antibody) at dilution 1/1000

Secondary antibody: Goat anti rabbit IgG at 1/5000 dilution

Exposure time: 1 minute