

Product datasheet for **TA323815**

Heme oxygenase 2 (HMOX2) Rabbit Polyclonal Antibody

Product data:

Product Type:	Primary Antibodies
Applications:	WB
Recommended Dilution:	WB: 200-1000 WB positive control: Human normal liver tissue and hepg2 cells, Jurkat and K562 cells
Reactivity:	Human, Mouse, Rat
Host:	Rabbit
Isotype:	IgG
Clonality:	Polyclonal
Immunogen:	Fusion protein corresponding to a region derived from 82-316 amino acids of human heme oxygenase (decycling) 2
Formulation:	PBS pH7.3, 0.05% NaN ₃ , 50% glycerol
Concentration:	lot specific
Purification:	Antigen affinity purification
Conjugation:	Unconjugated
Storage:	Store at -20°C as received.
Stability:	Stable for 12 months from date of receipt.
Predicted Protein Size:	36 kDa
Gene Name:	heme oxygenase 2
Database Link:	NP_001120676 Entrez Gene 15369 Mouse Entrez Gene 79239 Rat Entrez Gene 3163 Human P30519
Background:	Heme oxygenase; an essential enzyme in heme catabolism; cleaves heme to form biliverdin; which is subsequently converted to bilirubin by biliverdin reductase; and carbon monoxide; a putative neurotransmitter. Heme oxygenase activity is induced by its substrate heme and by various nonheme substances. Heme oxygenase occurs as 2 isozymes; an inducible heme oxygenase-1 and a constitutive heme oxygenase-2. HMOX1 and HMOX2 belong to the heme oxygenase family. Alternative splice variants encoding the same protein have been identified at this locus.?



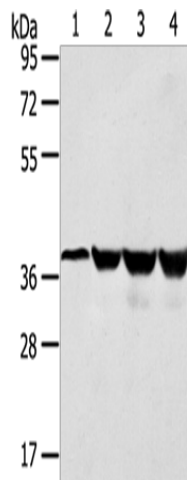
[View online »](#)

Synonyms: HO-2

Protein Families: Transmembrane

Protein Pathways: Porphyrin and chlorophyll metabolism

Product images:



Gel: 10%SDS-PAGE

Lysate: 30 μ g

Lane 1-4: Human normal liver tissue

hepg2 cells

Jurkat cells

K562 cells

Primary antibody: TA323815 (HMOX2 Antibody)
at dilution 1/550

Secondary antibody: Goat anti rabbit IgG at
1/8000 dilution

Exposure time: 15 seconds