

## Product datasheet for **TA323814S**

### FLIP (CFLAR) Rabbit Polyclonal Antibody

#### Product data:

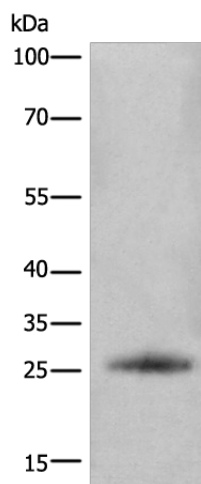
|                         |  |
|-------------------------|--|
| Product Type:           | Primary Antibodies   |
| Applications:           | WB   |
| Recommended Dilution:   | WB: 200-1000<br>WB positive control: Human fetal kidney tissue   |
| Reactivity:             | Human  |
| Host:                   | Rabbit   |
| Isotype:                | IgG  |
| Clonality:              | Polyclonal   |
| Immunogen:              | Synthetic peptide peptide corresponding to a region derived from 201-218 amino acids of human CASP8 and FADD-like apoptosis regulator  |
| Formulation:            | PBS pH7.3, 0.05% NaN <sub>3</sub> , 50% glycerol   |
| Purification:           | Antigen affinity purification  |
| Conjugation:            | Unconjugated   |
| Storage:                | Store at -20°C as received.  |
| Stability:              | Stable for 12 months from date of receipt.   |
| Predicted Protein Size: | 25 kDa   |
| Gene Name:              | CASP8 and FADD like apoptosis regulator  |
| Database Link:          | <a href="#">NP_001120656</a><br><a href="#">Entrez Gene 8837 Human</a><br><a href="#">O15519</a>   |
| Background:             | The protein encoded by this gene is a regulator of apoptosis and is structurally similar to caspase-8. However; the encoded protein lacks caspase activity and appears to be itself cleaved into two peptides by caspase-8. Several transcript variants encoding different isoforms have been found for this gene; and partial evidence for several more variants exists.? |
| Synonyms:               | c-FLIP; c-FLIPL; c-FLIPR; c-FLIPS; CASH; CASP8AP1; Casper; CLARP; FLAME; FLAME-1; FLAME1; FLIP   |
| Protein Families:       | Druggable Genome, Protease   |



[View online »](#)

Protein Pathways: Apoptosis

### Product images:



Gel: 10%SDS-PAGE  
Lysate: 40  $\mu$ g  
Lane: Human fetal kidney tissue  
Primary antibody: [TA323814] (CFLAR(FLIP-S)  
Antibody) at dilution 1/200  
Secondary antibody: Goat anti rabbit IgG at  
1/8000 dilution  
Exposure time: 30 seconds