

Product datasheet for **TA323812S**

p73 (TP73) Rabbit Polyclonal Antibody

Product data:

Product Type:	Primary Antibodies
Applications:	IHC, WB
Recommended Dilution:	WB: 500-2000 WB positive control: HepG2, Hela, K562 cell lysates IHC: 50-200 Positive control: Human esophagus cancer Predicted cell location: Nucleus
Reactivity:	Human, Mouse
Host:	Rabbit
Isotype:	IgG
Clonality:	Polyclonal
Immunogen:	Fusion protein corresponding to a region derived from 131-310 amino acids of human tumor protein p73
Formulation:	PBS pH7.3, 0.05% NaN ₃ , 50% glycerol
Purification:	Antigen affinity purification
Conjugation:	Unconjugated
Storage:	Store at -20°C as received.
Stability:	Stable for 12 months from date of receipt.
Predicted Protein Size:	70 kDa
Gene Name:	tumor protein p73
Database Link:	NP_001119712 Entrez Gene 7161 Human O15350



[View online »](#)

Background:

This gene encodes a member of the p53 family of transcription factors involved in cellular responses to stress and development. It maps to a region on chromosome 1p36 that is frequently deleted in neuroblastoma and other tumors; and thought to contain multiple tumor suppressor genes. The demonstration that this gene is monoallelically expressed (likely from the maternal allele); supports the notion that it is a candidate gene for neuroblastoma. Many transcript variants resulting from alternative splicing and/or use of alternate promoters have been found for this gene; but the biological validity and the full-length nature of some variants have not been determined.

Synonyms:

P73

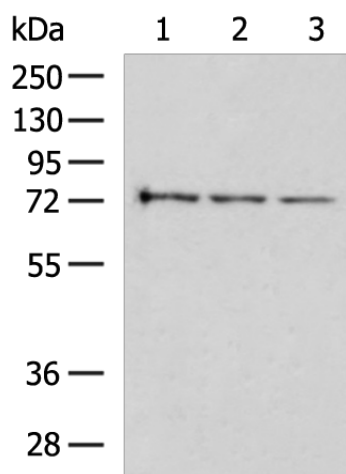
Protein Families:

Druggable Genome, Transcription Factors

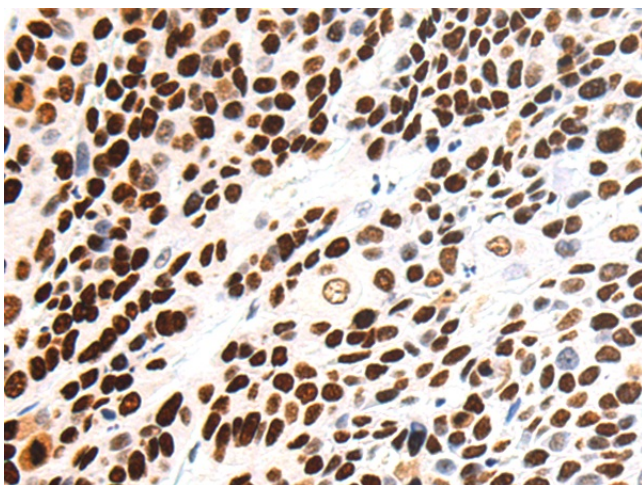
Protein Pathways:

Neurotrophin signaling pathway, p53 signaling pathway

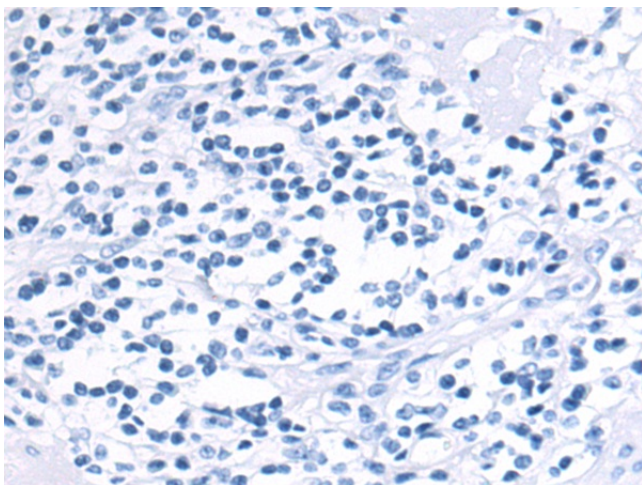
Product images:



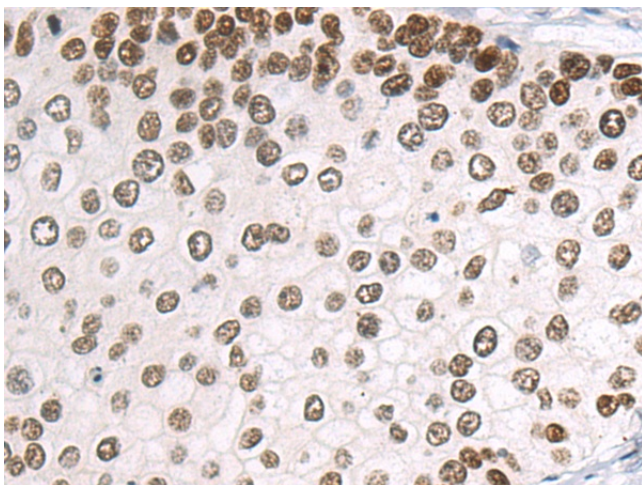
Gel: 8%SDS-PAGE
 Lysate: 40 µg
 Lane 1-3: HepG2
 Hela
 K562 cell lysates
 Primary antibody: [TA323812] (TP73 Antibody) at dilution 1/550
 Secondary antibody: Goat anti rabbit IgG at 1/5000 dilution
 Exposure time: 1 minute



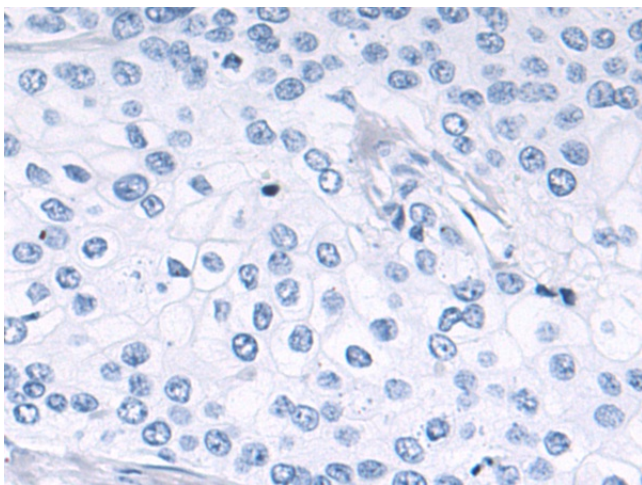
Immunohistochemistry of paraffin-embedded Human esophagus cancer tissue using [TA323812] (TP73 Antibody) at dilution 1/70 (Original magnification: ×200)



Immunohistochemistry of paraffin-embedded Human esophagus cancer tissue using [TA323812] (TP73 Antibody) at dilution 1/70, treated with fusion protein. (Original magnification: $\times 200$)



Immunohistochemistry of paraffin-embedded Human cervical cancer tissue using [TA323812] (TP73 Antibody) at dilution 1/70 (Original magnification: $\times 200$)



Immunohistochemistry of paraffin-embedded Human cervical cancer tissue using [TA323812] (TP73 Antibody) at dilution 1/70, treated with fusion protein. (Original magnification: $\times 200$)