

## Product datasheet for **TA323811S**

### Haptoglobin (HP) Rabbit Polyclonal Antibody

#### Product data:

Product Type:	Primary Antibodies
Applications:	IHC, WB
Recommended Dilution:	WB: 200-1000 WB positive control: Human brain gliomas tissue IHC: 25-100 Positive control: Human lung cancer Predicted cell location: Cytoplasm
Reactivity:	Human, Mouse, Rat
Host:	Rabbit
Isotype:	IgG
Clonality:	Polyclonal
Immunogen:	Fusion protein corresponding to a region derived from 162-406 amino acids of human haptoglobin
Formulation:	PBS pH7.3, 0.05% NaN <sub>3</sub> , 50% glycerol
Purification:	Antigen affinity purification
Conjugation:	Unconjugated
Storage:	Store at -20°C as received.
Stability:	Stable for 12 months from date of receipt.
Predicted Protein Size:	45 kDa
Gene Name:	haptoglobin
Database Link:	<a href="#">NP_001119574</a> <a href="#">Entrez Gene 15439 Mouse</a> <a href="#">Entrez Gene 24464 Rat</a> <a href="#">Entrez Gene 3240 Human</a> <a href="#">P00738</a>



[View online »](#)

**Background:**

This gene encodes a preproprotein; which is processed to yield both alpha and beta chains; which subsequently combine as a tetramer to produce haptoglobin. Haptoglobin functions to bind free plasma hemoglobin; which allows degradative enzymes to gain access to the hemoglobin; while at the same time preventing loss of iron through the kidneys and protecting the kidneys from damage by hemoglobin. Mutations in this gene and/or its regulatory regions cause ahaptoglobinemia or hypohaptoglobinemia. This gene has also been linked to diabetic nephropathy; the incidence of coronary artery disease in type 1 diabetes; Crohn's disease; inflammatory disease behavior; primary sclerosing cholangitis; susceptibility to idiopathic Parkinson's disease; and a reduced incidence of Plasmodium falciparum malaria. A similar duplicated gene is located next to this gene on chromosome 16. Multiple transcript variants encoding different isoforms have been found for this gene.

**Synonyms:**

BP; HP2ALPHA2; HPA1S

**Protein Families:**

Druggable Genome, Protease, Secreted Protein, Transmembrane

**Product images:**

Gel: 10%SDS-PAGE

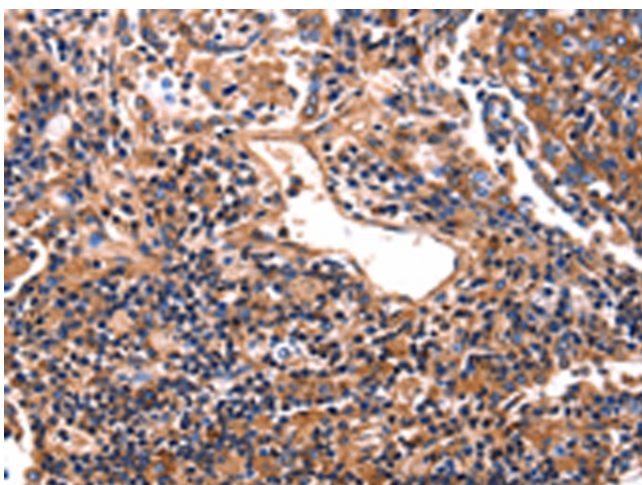
Lysate: 30 µg

Lane: Human brain glioma tissue

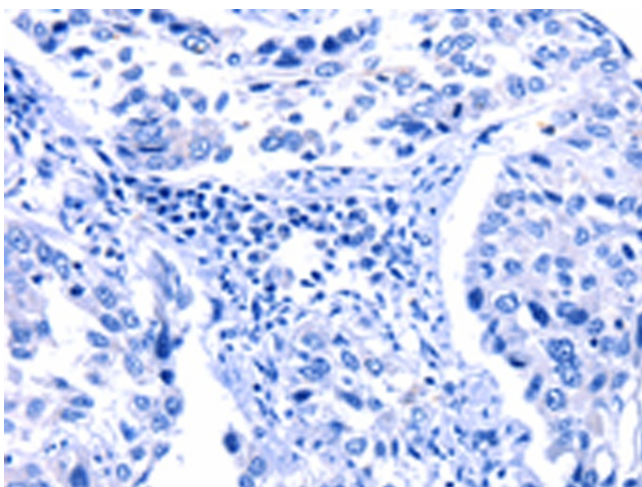
Primary antibody: [TA323811] (HP Antibody) at dilution 1/400

Secondary antibody: Goat anti rabbit IgG at 1/8000 dilution

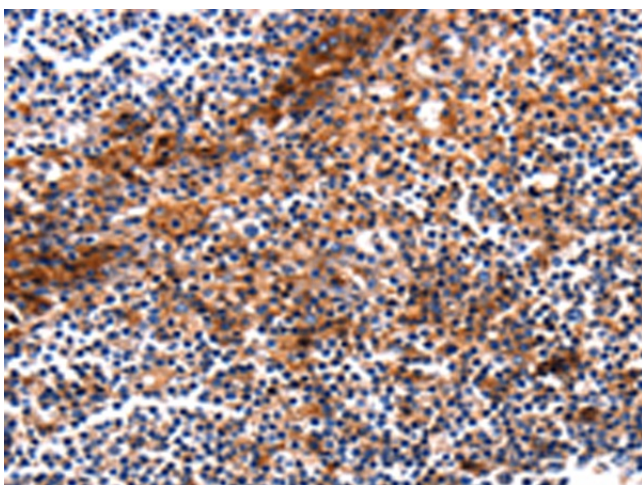
Exposure time: 5 seconds



Immunohistochemistry of paraffin-embedded Human lung cancer tissue using [TA323811] (HP Antibody) at dilution 1/25 (Original magnification: ×200)



Immunohistochemistry of paraffin-embedded Human lung cancer tissue using [TA323811] (HP Antibody) at dilution 1/25, treated with fusion protein. (Original magnification: ×200)



Immunohistochemistry of paraffin-embedded Human tonsil tissue using [TA323811] (HP Antibody) at dilution 1/25 (Original magnification: ×200)



Immunohistochemistry of paraffin-embedded Human tonsil tissue using [TA323811] (HP Antibody) at dilution 1/25, treated with fusion protein. (Original magnification:  $\times 200$ )