

## Product datasheet for **TA323809S**

### BCOR Rabbit Polyclonal Antibody

#### Product data:

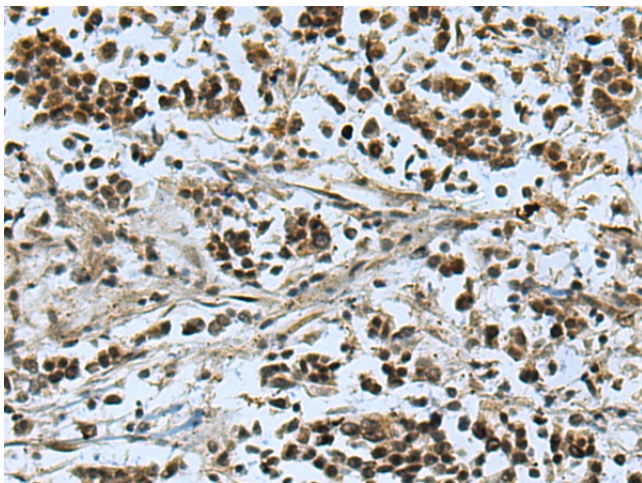
Product Type:	Primary Antibodies
Applications:	IHC
Recommended Dilution:	IHC: 100-200 Positive control: Human breast cancer Predicted cell location: Nucleus
Reactivity:	Human, Mouse
Host:	Rabbit
Isotype:	IgG
Clonality:	Polyclonal
Immunogen:	Fusion protein corresponding to a region derived from 2-189 amino acids of human BCL6 corepressor
Formulation:	PBS pH7.3, 0.05% NaN <sub>3</sub> , 50% glycerol
Purification:	Antigen affinity purification
Conjugation:	Unconjugated
Storage:	Store at -20°C as received.
Stability:	Stable for 12 months from date of receipt.
Gene Name:	BCL6 corepressor
Database Link:	<a href="#">NP_065977</a> <a href="#">Entrez Gene 71458 Mouse</a> <a href="#">Entrez Gene 54880 Human</a> <a href="#">Q6W2I9</a>
Background:	The protein encoded by this gene was identified as an interacting corepressor of BCL6; a POZ/zinc finger transcription repressor that is required for germinal center formation and may influence apoptosis. This protein selectively interacts with the POZ domain of BCL6; but not with eight other POZ proteins. Specific class I and II histone deacetylases (HDACs) have been shown to interact with this protein; which suggests a possible link between the two classes of HDACs. Several transcript variants encoding different isoforms have been found for this gene. A pseudogene of this gene is found on chromosome Y.
Synonyms:	ANOP2; FLJ20285; FLJ38041; KIAA1575; MAA2; MCOPS2; MGC71031; MGC131961



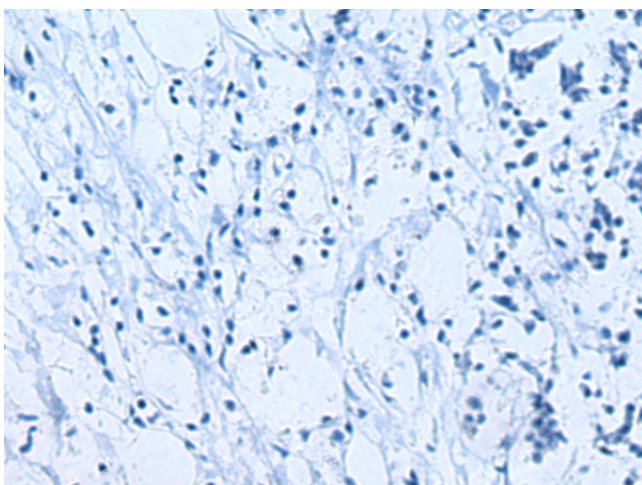
[View online »](#)

Protein Families: Transcription Factors

**Product images:**



Immunohistochemistry of paraffin-embedded Human breast cancer tissue using [TA323809] (BCOR Antibody) at dilution 1/120 (Original magnification:  $\times 200$ )



Immunohistochemistry of paraffin-embedded Human breast cancer tissue using [TA323809] (BCOR Antibody) at dilution 1/120, treated with fusion protein. (Original magnification:  $\times 200$ )