

## Product datasheet for **TA323808**

### BCOR Rabbit Polyclonal Antibody

#### Product data:

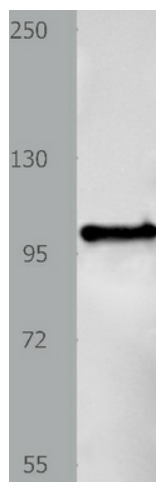
Product Type:	Primary Antibodies
Applications:	WB
Recommended Dilution:	ELISA: 1:2000-5000, WB: 1:500-2000
Reactivity:	Human, Mouse, Rat
Host:	Rabbit
Isotype:	IgG
Clonality:	Polyclonal
Immunogen:	Fusion protein corresponding to a region derived from 2-189 amino acids of human BCL6 corepressor
Formulation:	PBS pH7.3, 0.05% NaN <sub>3</sub> , 50% glycerol
Concentration:	lot specific
Purification:	Antigen affinity purification
Conjugation:	Unconjugated
Storage:	Store at -20°C as received.
Stability:	Stable for 12 months from date of receipt.
Predicted Protein Size:	21 kDa
Gene Name:	BCL6 corepressor
Database Link:	<a href="#">NP_001116855</a> <a href="#">Entrez Gene 71458 MouseEntrez Gene 317346 RatEntrez Gene 54880 Human Q6W2J9</a>
Background:	The protein encoded by this gene was identified as an interacting corepressor of BCL6; a POZ/zinc finger transcription repressor that is required for germinal center formation and may influence apoptosis. This protein selectively interacts with the POZ domain of BCL6; but not with eight other POZ proteins. Specific class I and II histone deacetylases (HDACs) have been shown to interact with this protein; which suggests a possible link between the two classes of HDACs. Several transcript variants encoding different isoforms have been found for this gene. A pseudogene of this gene is found on chromosome Y.
Synonyms:	ANOP2; MAA2; MCOPS2



[View online »](#)

Protein Families: Transcription Factors

### Product images:



Predicted band size: 21 kDa. Positive control: Mouse stomach tissue lysate. Recommended dilution: 1/500-2000. (Gel: 8%SDS-PAGE Lysate: 40 ug Primary antibody: 1/350 dilution Secondary antibody: Goat anti Rabbit IgG - H&L (HRP) at 1/10000 dilution Exposure time: 40 seconds)