

## Product datasheet for **TA323807**

### **PARK7 Rabbit Polyclonal Antibody**

#### **Product data:**

|                         |   |
|-------------------------|---|
| Product Type:           | Primary Antibodies  |
| Applications:           | WB  |
| Recommended Dilution:   | WB: 200-1000<br>WB positive control: HT-29 cells  |
| Reactivity:             | Human, Mouse, Rat   |
| Host:                   | Rabbit  |
| Isotype:                | IgG   |
| Clonality:              | Polyclonal  |
| Immunogen:              | Full length fusion protein  |
| Formulation:            | PBS pH7.3, 0.05% NaN <sub>3</sub> , 50% glycerol  |
| Concentration:          | lot specific  |
| Purification:           | Antigen affinity purification   |
| Conjugation:            | Unconjugated  |
| Storage:                | Store at -20°C as received.   |
| Stability:              | Stable for 12 months from date of receipt.  |
| Predicted Protein Size: | 20 kDa  |
| Gene Name:              | Parkinsonism associated deglycase   |
| Database Link:          | <a href="#">NP_001116849</a><br><a href="#">Entrez Gene 57320 MouseEntrez Gene 117287 RatEntrez Gene 11315 Human Q99497</a>   |
| Background:             | The product of this gene belongs to the peptidase C56 family of proteins. It acts as a positive regulator of androgen receptor-dependent transcription. It may also function as a redox-sensitive chaperone; as a sensor for oxidative stress; and it apparently protects neurons against oxidative stress and cell death. Defects in this gene are the cause of autosomal recessive early-onset Parkinson disease 7. Two transcript variants encoding the same protein have been identified for this gene. |
| Synonyms:               | DJ-1; DJ1; HEL-S-67p  |

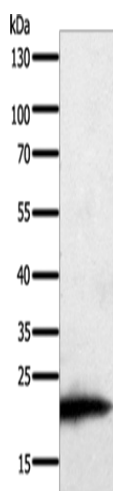


[View online »](#)

Protein Families: Druggable Genome, Protease

Protein Pathways: Parkinson's disease

### Product images:



Gel: 8+10%SDS-PAGE

Lysate: 60  $\mu$ g

Lane: HT29 cells

Primary antibody: TA323807 (PARK7 Antibody) at dilution 1/200

Secondary antibody: Goat anti rabbit IgG at 1/8000 dilution

Exposure time: 2 minutes