

Product datasheet for **TA323806S**

PARK7 Rabbit Polyclonal Antibody

Product data:

Product Type:	Primary Antibodies
Applications:	IHC, WB
Recommended Dilution:	WB: 200-1000 WB positive control: Hela and Jurkat cell IHC: 50-200 Positive control: Human lung cancer Predicted cell location: Cytoplasm,Nucleus
Reactivity:	Human, Mouse, Rat
Host:	Rabbit
Isotype:	IgG
Clonality:	Polyclonal
Immunogen:	Full length fusion protein
Formulation:	PBS pH7.3, 0.05% NaN ₃ , 50% glycerol
Purification:	Antigen affinity purification
Conjugation:	Unconjugated
Storage:	Store at -20°C as received.
Stability:	Stable for 12 months from date of receipt.
Predicted Protein Size:	20 kDa
Gene Name:	Parkinsonism associated deglycase
Database Link:	NP_001116849 Entrez Gene 57320 MouseEntrez Gene 117287 RatEntrez Gene 11315 Human Q99497

Background: The product of this gene belongs to the peptidase C56 family of proteins. It acts as a positive regulator of androgen receptor-dependent transcription. It may also function as a redox-sensitive chaperone; as a sensor for oxidative stress; and it apparently protects neurons against oxidative stress and cell death. Defects in this gene are the cause of autosomal recessive early-onset Parkinson disease 7. Two transcript variants encoding the same protein have been identified for this gene.



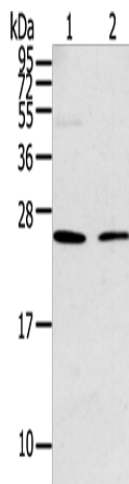
[View online »](#)

Synonyms: DJ-1; DJ1; HEL-S-67p

Protein Families: Druggable Genome, Protease

Protein Pathways: Parkinson's disease

Product images:



Gel: 12%SDS-PAGE

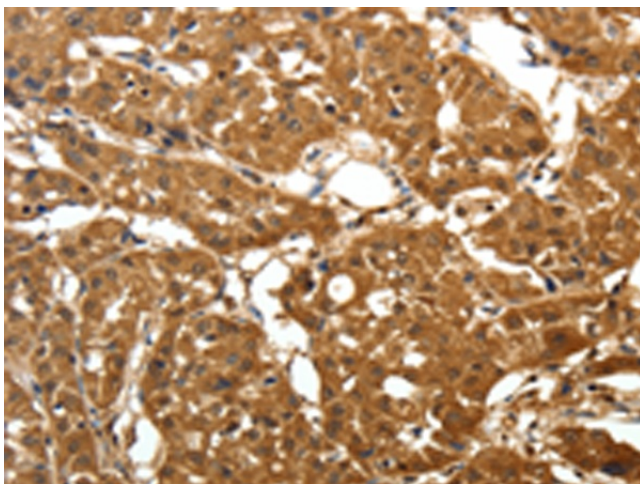
Lysate: 40 μ g

Lane 1-2: HeLa and Jurkat cell

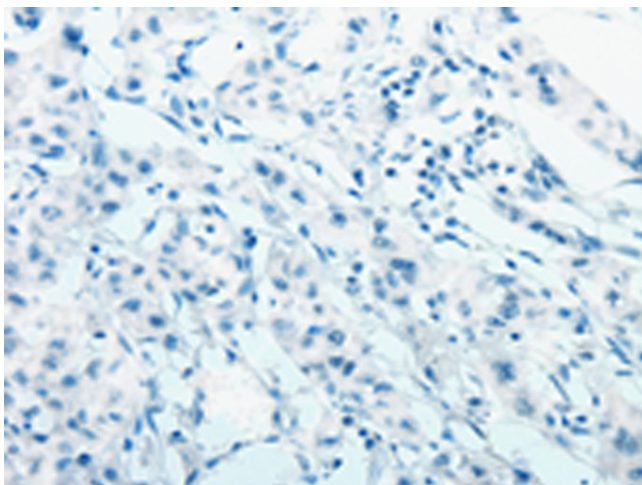
Primary antibody: [TA323806] (PARK7 Antibody) at dilution 1/200

Secondary antibody: Goat anti rabbit IgG at 1/8000 dilution

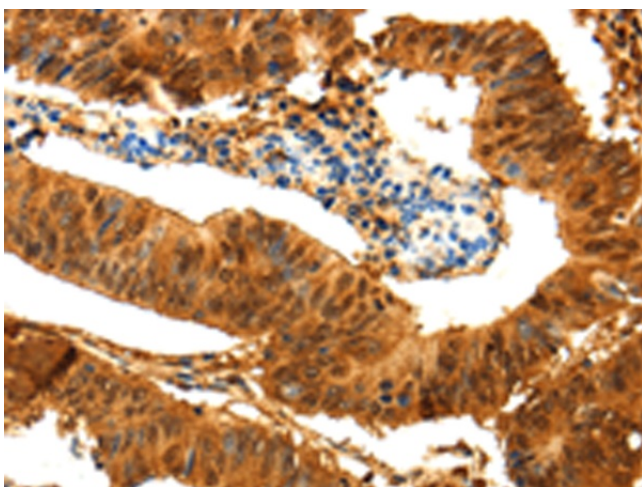
Exposure time: 15 seconds



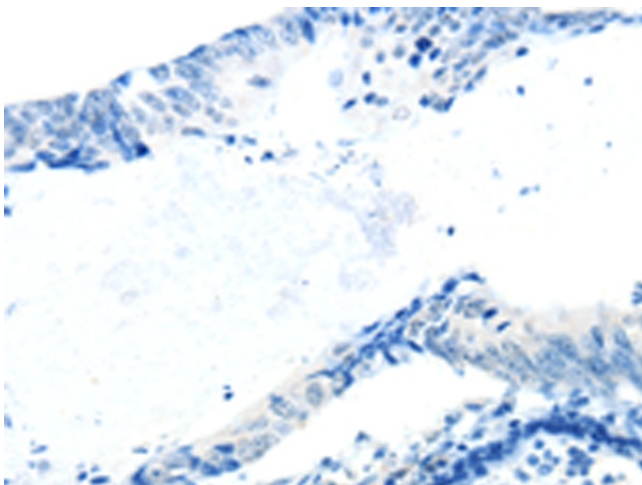
Immunohistochemistry of paraffin-embedded Human lung cancer tissue using [TA323806] (PARK7 Antibody) at dilution 1/25 (Original magnification: \times 200)



Immunohistochemistry of paraffin-embedded Human lung cancer tissue using [TA323806] (PARK7 Antibody) at dilution 1/25, treated with fusion protein. (Original magnification: ×200)



Immunohistochemistry of paraffin-embedded Human colon cancer tissue using [TA323806] (PARK7 Antibody) at dilution 1/25 (Original magnification: ×200)



Immunohistochemistry of paraffin-embedded Human colon cancer tissue using [TA323806] (PARK7 Antibody) at dilution 1/25, treated with fusion protein. (Original magnification: ×200)