

## Product datasheet for **TA323806**

### **PARK7 Rabbit Polyclonal Antibody**

#### **Product data:**

Product Type:	Primary Antibodies
Applications:	IHC, WB
Recommended Dilution:	WB: 200-1000 WB positive control: Hela and Jurkat cell IHC: 50-200 Positive control: Human lung cancer Predicted cell location: Cytoplasm,Nucleus
Reactivity:	Human, Mouse, Rat
Host:	Rabbit
Isotype:	IgG
Clonality:	Polyclonal
Immunogen:	Full length fusion protein
Formulation:	PBS pH7.3, 0.05% NaN <sub>3</sub> , 50% glycerol
Concentration:	lot specific
Purification:	Antigen affinity purification
Conjugation:	Unconjugated
Storage:	Store at -20°C as received.
Stability:	Stable for 12 months from date of receipt.
Predicted Protein Size:	20 kDa
Gene Name:	Parkinsonism associated deglycase
Database Link:	<a href="#">NP_001116849</a> <a href="#">Entrez Gene 57320 Mouse</a> <a href="#">Entrez Gene 117287 Rat</a> <a href="#">Entrez Gene 11315 Human</a> <a href="#">Q99497</a>



[View online »](#)

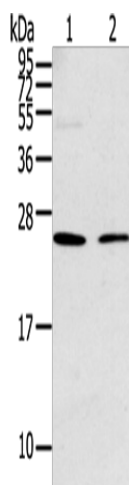
**Background:** The product of this gene belongs to the peptidase C56 family of proteins. It acts as a positive regulator of androgen receptor-dependent transcription. It may also function as a redox-sensitive chaperone; as a sensor for oxidative stress; and it apparently protects neurons against oxidative stress and cell death. Defects in this gene are the cause of autosomal recessive early-onset Parkinson disease 7. Two transcript variants encoding the same protein have been identified for this gene.

**Synonyms:** DJ-1; DJ1; HEL-S-67p

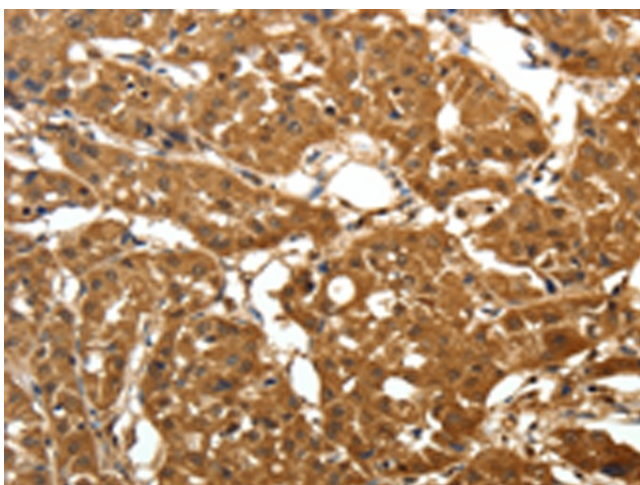
**Protein Families:** Druggable Genome, Protease

**Protein Pathways:** Parkinson's disease

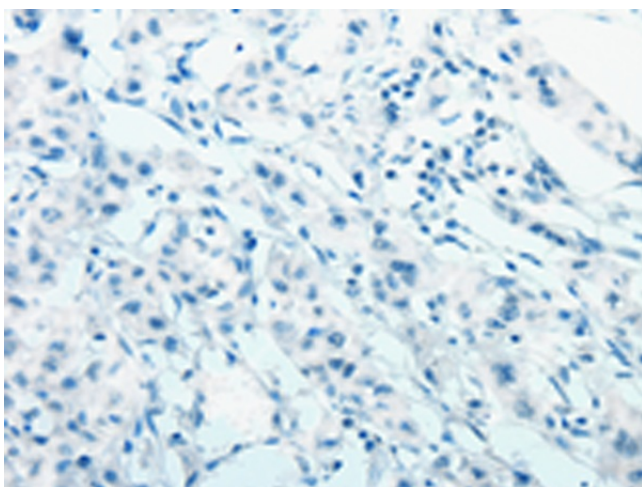
### Product images:



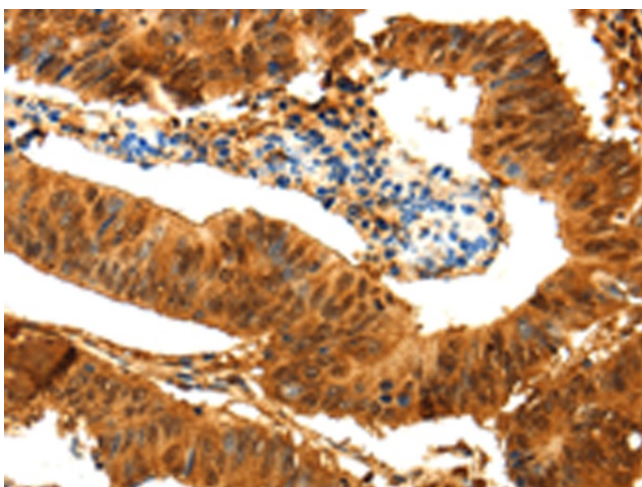
Gel: 12%SDS-PAGE  
Lysate: 40 µg  
Lane 1-2: HeLa and Jurkat cell  
Primary antibody: TA323806 (PARK7 Antibody) at dilution 1/200  
Secondary antibody: Goat anti rabbit IgG at 1/8000 dilution  
Exposure time: 15 seconds



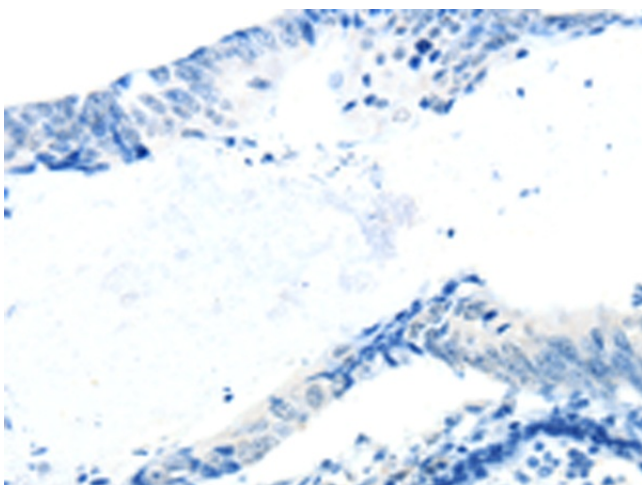
Immunohistochemistry of paraffin-embedded Human lung cancer tissue using TA323806 (PARK7 Antibody) at dilution 1/25 (Original magnification: ×200)



Immunohistochemistry of paraffin-embedded Human lung cancer tissue using TA323806 (PARK7 Antibody) at dilution 1/25, treated with fusion protein. (Original magnification: ×200)



Immunohistochemistry of paraffin-embedded Human colon cancer tissue using TA323806 (PARK7 Antibody) at dilution 1/25 (Original magnification: ×200)



Immunohistochemistry of paraffin-embedded Human colon cancer tissue using TA323806 (PARK7 Antibody) at dilution 1/25, treated with fusion protein. (Original magnification: ×200)