

Product datasheet for **TA323794**

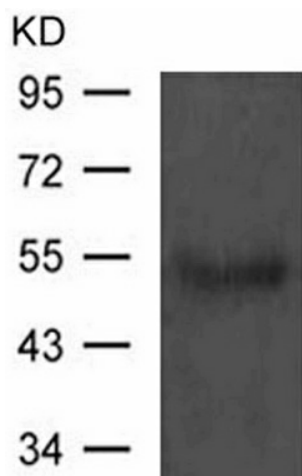
Neuroserpin (SERPINI1) Rabbit Polyclonal Antibody

Product data:

Product Type:	Primary Antibodies
Applications:	WB
Recommended Dilution:	WB: 1:500-1000
Reactivity:	Human, Mouse, Rat
Host:	Rabbit
Isotype:	IgG
Clonality:	Polyclonal
Immunogen:	Peptide sequence around aa.402~406(T-S-G-H-D) derived from Human Neuroserpin.
Formulation:	PBS pH7.3, 0.05% NaN ₃ , 50% glycerol
Concentration:	lot specific
Purification:	Antigen affinity purification
Conjugation:	Unconjugated
Storage:	Store at -20°C as received.
Stability:	Stable for 12 months from date of receipt.
Predicted Protein Size:	46 kDa
Gene Name:	serpin family I member 1
Database Link:	NP_001116224 Entrez Gene 20713 MouseEntrez Gene 116459 RatEntrez Gene 5274 Human Q99574
Background:	Serine protease inhibitor that inhibits plasminogen activators and plasmin but not thrombin. May be involved in the formation or reorganization of synaptic connections as well as for synaptic plasticity in the adult nervous system. May protect neurons from cell damage by tissue-type plasminogen activator.
Synonyms:	neuroserpin; PI12
Protein Families:	Druggable Genome, Secreted Protein



[View online »](#)

Product images:

Predicted band size: 46 kDa. Positive control: Mouse brain tissue lysate. Recommended dilution: 1/ 500-1000. (Gel: 10%SDS-PAGE Lysate: 30 ug Primary antibody: 1/500 dilution Secondary antibody: Goat anti Rabbit IgG - H&L (HRP) at 1/10000 dilution Exposure time: 1 minute)