

Product datasheet for **TA323790**

p63 (TP63) Rabbit Polyclonal Antibody

Product data:

Product Type:	Primary Antibodies
Applications:	IHC, WB
Recommended Dilution:	WB: 200-1000 WB positive control: Mouse bladder tissue IHC: 25-100 Positive control: Human thyroid cancer Predicted cell location: Cytoplasm
Reactivity:	Human, Mouse, Rat
Host:	Rabbit
Isotype:	IgG
Clonality:	Polyclonal
Immunogen:	Fusion protein corresponding to a region derived from 450-680 amino acids of human tumor protein p63
Formulation:	PBS pH7.3, 0.05% NaN ₃ , 50% glycerol
Concentration:	lot specific
Purification:	Antigen affinity purification
Conjugation:	Unconjugated
Storage:	Store at -20°C as received.
Stability:	Stable for 12 months from date of receipt.
Predicted Protein Size:	77 kDa
Gene Name:	tumor protein p63
Database Link:	NP_001108450 Entrez Gene 246334 Rat Entrez Gene 8626 Human Q9H3D4



[View online »](#)

Background:

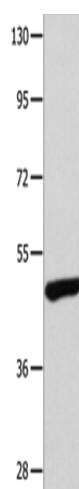
This gene encodes a member of the p53 family of transcription factors. An animal model; p63 $-/-$ mice; has been useful in defining the role this protein plays in the development and maintenance of stratified epithelial tissues. p63 $-/-$ mice have several developmental defects which include the lack of limbs and other tissues; such as teeth and mammary glands; which develop as a result of interactions between mesenchyme and epithelium. Mutations in this gene are associated with ectodermal dysplasia; and cleft lip/palate syndrome 3 (EEC3); split-hand/foot malformation 4 (SHFM4); ankyloblepharon-ectodermal defects-cleft lip/palate; ADULT syndrome (acro-dermato-ungual-lacrimal-tooth); limb-mammary syndrome; Rap-Hodgkin syndrome (RHS); and orofacial cleft 8. Both alternative splicing and the use of alternative promoters results in multiple transcript variants encoding different proteins.

Synonyms:

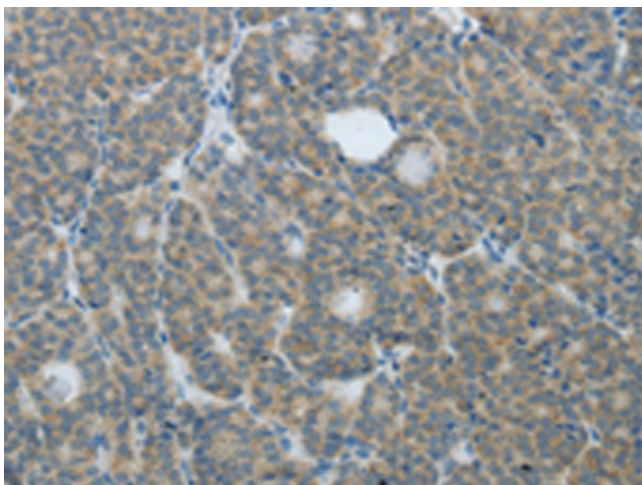
AIS; B(p51A); B(p51B); EEC3; KET; LMS; NBP; OFC8; p40; p51; p53CP; p63; p73H; p73L; RHS; SHFM4

Protein Families:

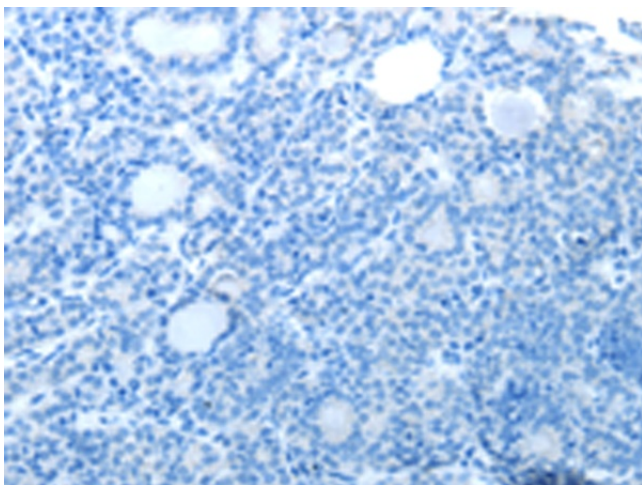
Druggable Genome, Transcription Factors

Product images:

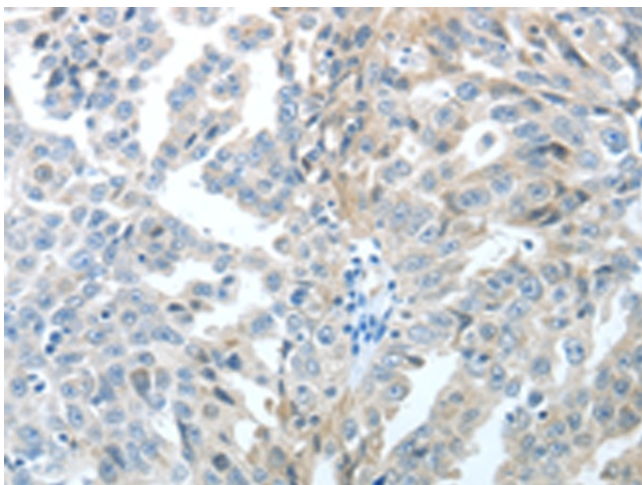
Gel: 10%SDS-PAGE
Lysate: 40 μ g
Lane: Mouse bladder tissue
Primary antibody: TA323790 (TP63 Antibody) at dilution 1/400
Secondary antibody: Goat anti rabbit IgG at 1/8000 dilution
Exposure time: 2 minutes



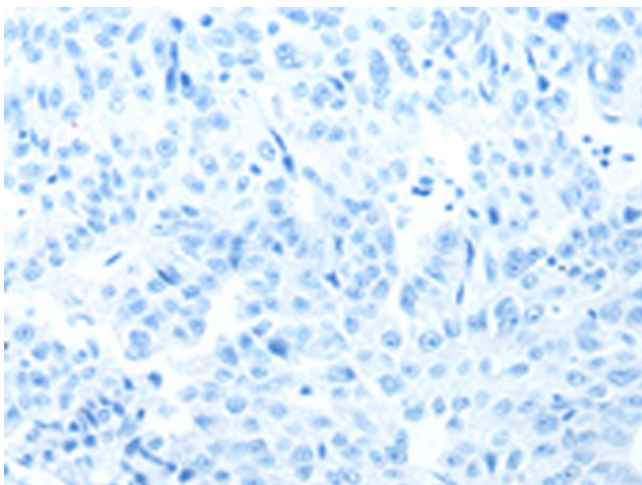
Immunohistochemistry of paraffin-embedded Human thyroid cancer tissue using TA323790 (TP63 Antibody) at dilution 1/20 (Original magnification: $\times 200$)



Immunohistochemistry of paraffin-embedded Human thyroid cancer tissue using TA323790 (TP63 Antibody) at dilution 1/20, treated with fusion protein. (Original magnification: $\times 200$)



Immunohistochemistry of paraffin-embedded Human ovarian cancer tissue using TA323790 (TP63 Antibody) at dilution 1/20 (Original magnification: $\times 200$)



Immunohistochemistry of paraffin-embedded Human ovarian cancer tissue using TA323790 (TP63 Antibody) at dilution 1/20, treated with fusion protein. (Original magnification: ×200)