

## Product datasheet for **TA323788**

### **BCL2A1 Rabbit Polyclonal Antibody**

#### **Product data:**

Product Type:	Primary Antibodies
Applications:	IHC, WB
Recommended Dilution:	WB: 200-1000 WB positive control: Mouse testis tissue and hela cells IHC: 25-100 Positive control: Human thyroid cancer Predicted cell location: Cytoplasm
Reactivity:	Human, Mouse
Host:	Rabbit
Isotype:	IgG
Clonality:	Polyclonal
Immunogen:	Fusion protein corresponding to a region derived from 1-175 amino acids of human BCL2-related protein A1
Formulation:	PBS pH7.3, 0.05% NaN <sub>3</sub> , 50% glycerol
Concentration:	lot specific
Purification:	Antigen affinity purification
Conjugation:	Unconjugated
Storage:	Store at -20°C as received.
Stability:	Stable for 12 months from date of receipt.
Predicted Protein Size:	20 kDa
Gene Name:	BCL2 related protein A1
Database Link:	<a href="#">NP_001108207</a> <a href="#">Entrez Gene 597 Human</a> <a href="#">Q16548</a>



[View online »](#)

**Background:**

This gene encodes a member of the BCL-2 protein family. The proteins of this family form hetero- or homodimers and act as anti- and pro-apoptotic regulators that are involved in a wide variety of cellular activities such as embryonic development, homeostasis and tumorigenesis. The protein encoded by this gene is able to reduce the release of pro-apoptotic cytochrome c from mitochondria and block caspase activation. This gene is a direct transcription target of NF-kappa B in response to inflammatory mediators, and is up-regulated by different extracellular signals, such as granulocyte-macrophage colony-stimulating factor (GM-CSF), CD40, phorbol ester and inflammatory cytokine TNF and IL-1, which suggests a cytoprotective function that is essential for lymphocyte activation as well as cell survival. Alternatively spliced transcript variants encoding different isoforms have been found for this gene.

**Synonyms:**

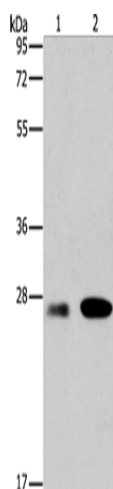
ACC-1; ACC-2; ACC1; ACC2; BCL2L5; BFL1; GRS; HBPA1

**Protein Families:**

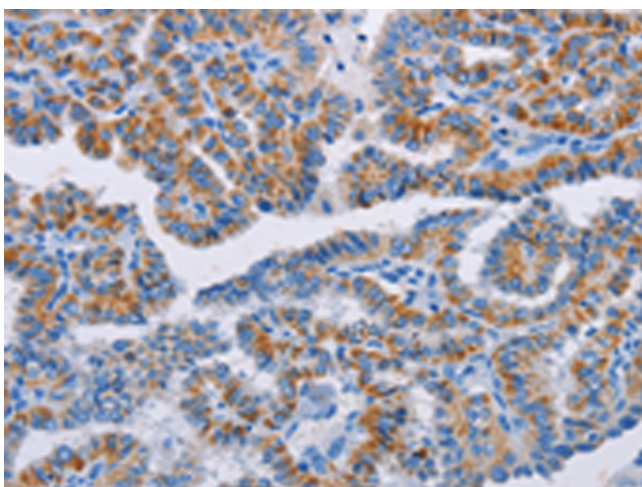
Druggable Genome

**Protein Pathways:**

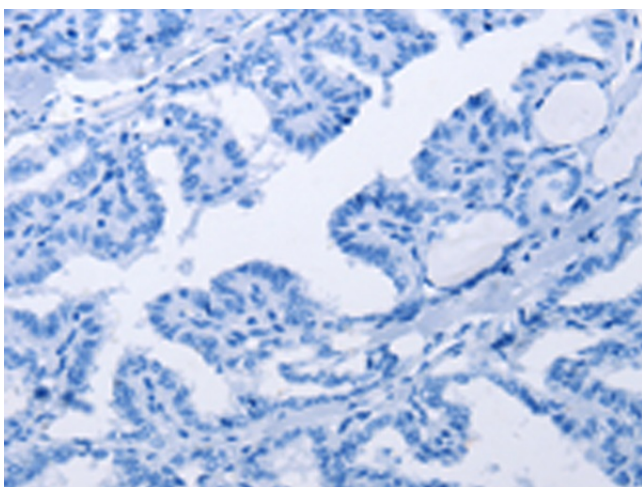
Metabolic pathways

**Product images:**

Gel: 12%SDS-PAGE  
Lysate: 40 µg  
Lane 1-2: Mouse testis tissue  
HeLa cells  
Primary antibody: TA323788 (BCL2A1 Antibody)  
at dilution 1/117  
Secondary antibody: Goat anti rabbit IgG at  
1/8000 dilution  
Exposure time: 1 minute



Immunohistochemistry of paraffin-embedded Human thyroid cancer tissue using TA323788 (BCL2A1 Antibody) at dilution 1/20 (Original magnification: ×200)



Immunohistochemistry of paraffin-embedded Human thyroid cancer tissue using TA323788 (BCL2A1 Antibody) at dilution 1/20, treated with fusion protein. (Original magnification: ×200)