

Product datasheet for **TA323782**

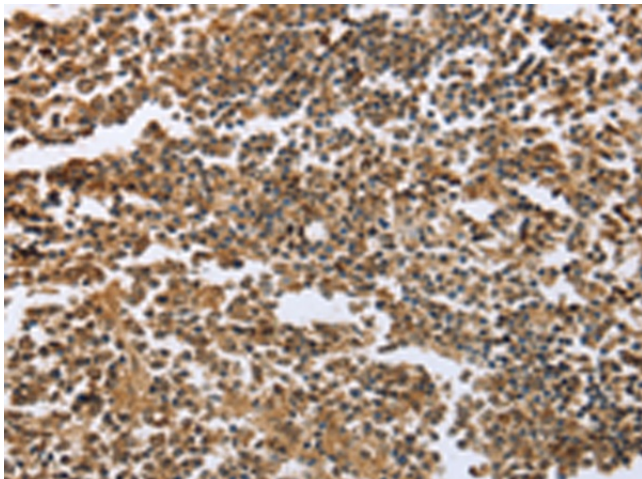
ECE1 Rabbit Polyclonal Antibody

Product data:

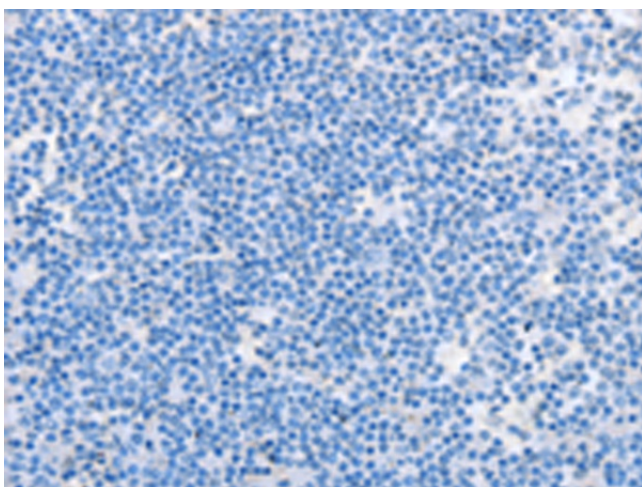
Product Type:	Primary Antibodies
Applications:	IHC
Recommended Dilution:	IHC: 50-200 Positive control: Human tonsil Predicted cell location: Cytoplasm
Reactivity:	Human, Mouse, Rat
Host:	Rabbit
Isotype:	IgG
Clonality:	Polyclonal
Immunogen:	Fusion protein corresponding to C terminal 300 amino acids of human endothelin converting enzyme 1
Formulation:	PBS pH7.3, 0.05% NaN ₃ , 50% glycerol
Concentration:	lot specific
Purification:	Antigen affinity purification
Conjugation:	Unconjugated
Storage:	Store at -20°C as received.
Stability:	Stable for 12 months from date of receipt.
Gene Name:	endothelin converting enzyme 1
Database Link:	NP_001388 Entrez Gene 94204 Rat Entrez Gene 230857 Mouse Entrez Gene 1889 Human P42892
Background:	The protein encoded by this gene is involved in proteolytic processing of endothelin precursors to biologically active peptides. Mutations in this gene are associated with Hirschsprung disease; cardiac defects and autonomic dysfunction. Alternatively spliced transcript variants encoding different isoforms have been noted for this gene.
Synonyms:	ECE
Protein Families:	Druggable Genome, Protease, Transmembrane



[View online »](#)

Product images:

Immunohistochemistry of paraffin-embedded Human tonsil tissue using TA323782 (ECE1 Antibody) at dilution 1/60 (Original magnification: ×200)



Immunohistochemistry of paraffin-embedded Human tonsil tissue using TA323782 (ECE1 Antibody) at dilution 1/60, treated with fusion protein. (Original magnification: ×200)