

Product datasheet for **TA323779**

HIP2 (UBE2K) Rabbit Polyclonal Antibody

Product data:

Product Type:	Primary Antibodies
Applications:	WB
Recommended Dilution:	WB: 1:500-2000
Reactivity:	Human, Mouse, Rat
Host:	Rabbit
Isotype:	IgG
Clonality:	Polyclonal
Immunogen:	Full length fusion protein
Formulation:	PBS pH7.3, 0.05% NaN ₃ , 50% glycerol
Concentration:	lot specific
Purification:	Antigen affinity purification
Conjugation:	Unconjugated
Storage:	Store at -20°C as received.
Stability:	Stable for 12 months from date of receipt.
Predicted Protein Size:	22 kDa
Gene Name:	ubiquitin conjugating enzyme E2 K
Database Link:	NP_001104582 Entrez Gene 53323 Mouse Entrez Gene 289623 Rat Entrez Gene 3093 Human P61086



[View online »](#)

Background:

Protein ubiquitination requires the concerted action of the E1, E2, and E3 ubiquitin-conjugating enzymes. Ubiquitin is first activated through ATP-dependent formation of a thiol ester with ubiquitin-activating enzyme E1. The activated ubiquitin is then transferred to a thiol group of ubiquitin-carrier enzyme E2. The final step is the transfer of ubiquitin from E2 to an ϵ -amino group of the target protein lysine residue, which is mediated by ubiquitin-ligase enzyme E3. E2-25K (Hip2) is a member of the E2 protein family that catalyzes multiubiquitin chain synthesis via Lys48 of ubiquitin. E2-25K is reportedly involved in Alzheimer's disease, Huntington's disease and antigen processing through its interaction with amyloid- β , huntingtin, and MHC-heavy chain proteins. Lys14 of E2-25K can be modified by SUMOylation, with this modification resulting in inhibited E2 activity.

Synonyms:

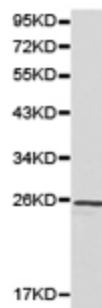
E2-25K; HIP2; HYPG; LIG; UBC1

Protein Families:

Druggable Genome, Transcription Factors

Protein Pathways:

Ubiquitin mediated proteolysis

Product images:

Predicted band size: 22 kDa. Positive control: Human brain tissue lysate. Recommended dilution: 1/500-2000. (Gel: 10%SDS-PAGE Lysate: 40 ug Primary antibody: 1/500 dilution Secondary antibody: Goat anti Rabbit IgG - H&L (HRP) at 1/10000 dilution Exposure time: 1 minute)