

Product datasheet for **TA323775**

Activin A Receptor Type IC (ACVR1C) Rabbit Polyclonal Antibody

Product data:

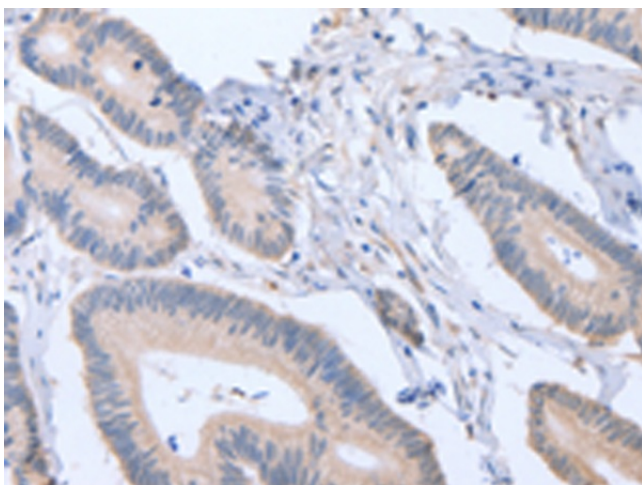
Product Type:	Primary Antibodies
Applications:	IHC
Recommended Dilution:	IHC: 15-50 Positive control: Human colon cancer Predicted cell location: Cytoplasm
Reactivity:	Human, Mouse, Rat
Host:	Rabbit
Isotype:	IgG
Clonality:	Polyclonal
Immunogen:	Fusion protein corresponding to a region derived from 195-485 amino acids of human activin A receptor, type IC
Formulation:	PBS pH7.3, 0.05% NaN ₃ , 50% glycerol
Concentration:	lot specific
Purification:	Antigen affinity purification
Conjugation:	Unconjugated
Storage:	Store at -20°C as received.
Stability:	Stable for 12 months from date of receipt.
Gene Name:	activin A receptor type 1C
Database Link:	NP_660302 Entrez Gene 245921 RatEntrez Gene 269275 MouseEntrez Gene 130399 Human Q8NER5
Background:	ACVR1C is a type I receptor for the TGFB (see MIM 190180) family of signaling molecules. Upon ligand binding, type I receptors phosphorylate cytoplasmic SMAD transcription factors, which then translocate to the nucleus and interact directly with DNA or in complex with other transcription factors (Bondestam et al., 2001 [PubMed 12063393]).
Synonyms:	ACVRLK7; ALK7
Protein Families:	Druggable Genome, Protein Kinase, Transmembrane



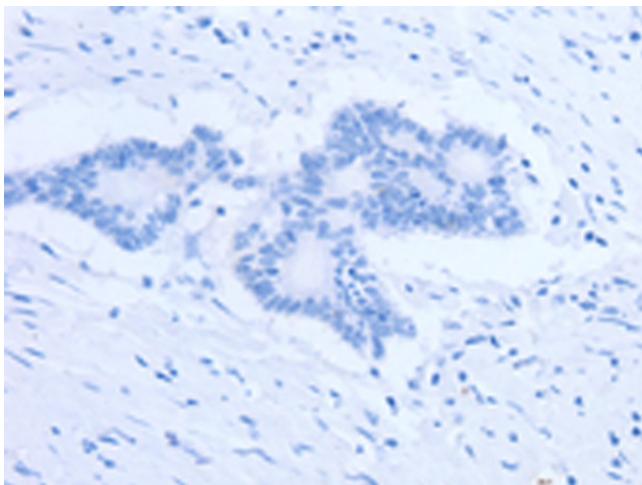
[View online »](#)

Protein Pathways: Adherens junction, Chronic myeloid leukemia, Colorectal cancer, Endocytosis, MAPK signaling pathway, Pancreatic cancer, Pathways in cancer, TGF-beta signaling pathway

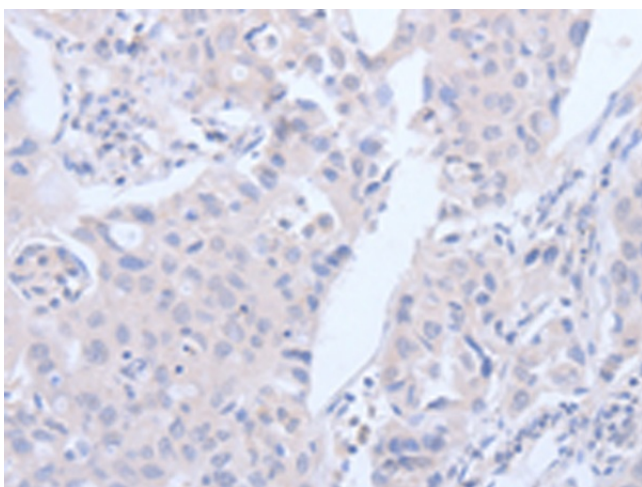
Product images:



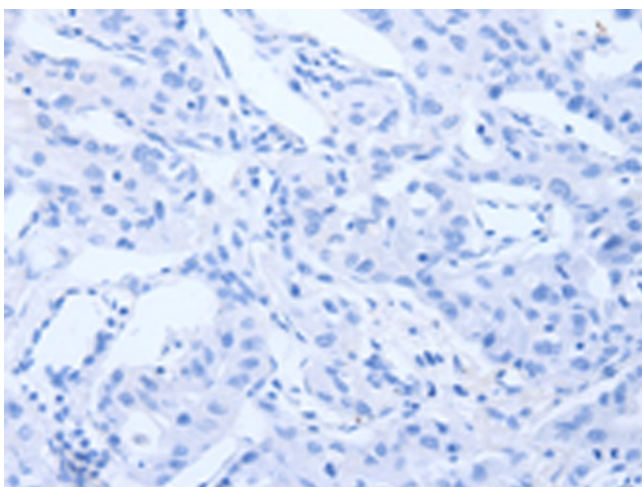
Immunohistochemistry of paraffin-embedded Human colon cancer tissue using TA323775 (ACVR1C Antibody) at dilution 1/15 (Original magnification: $\times 200$)



Immunohistochemistry of paraffin-embedded Human colon cancer tissue using TA323775 (ACVR1C Antibody) at dilution 1/15, treated with fusion protein. (Original magnification: $\times 200$)



Immunohistochemistry of paraffin-embedded Human lung cancer tissue using TA323775 (ACVR1C Antibody) at dilution 1/15 (Original magnification: ×200)



Immunohistochemistry of paraffin-embedded Human lung cancer tissue using TA323775 (ACVR1C Antibody) at dilution 1/15, treated with fusion protein. (Original magnification: ×200)