

## Product datasheet for **TA323773**

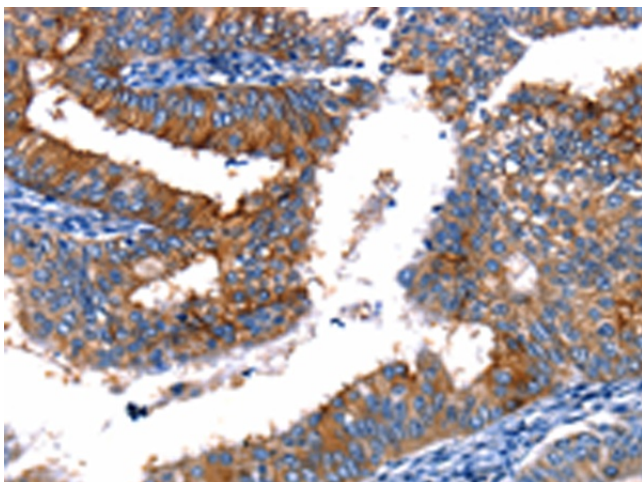
### TBX22 Rabbit Polyclonal Antibody

#### Product data:

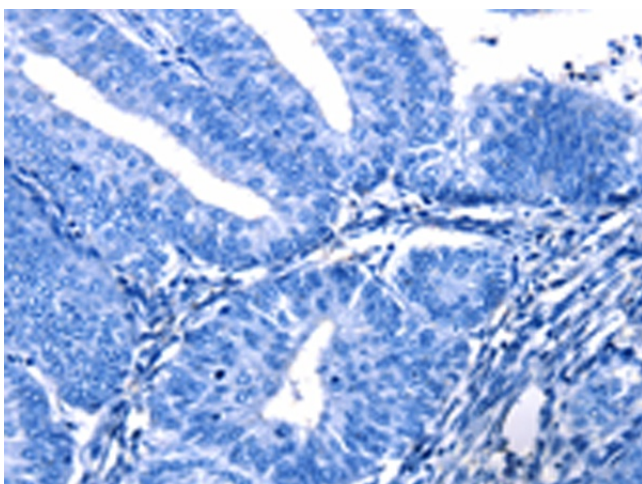
Product Type:	Primary Antibodies
Applications:	IHC
Recommended Dilution:	IHC: 25-100 Positive control: Human cervical cancer Predicted cell location: Cytoplasm
Reactivity:	Human
Host:	Rabbit
Isotype:	IgG
Clonality:	Polyclonal
Immunogen:	Fusion protein corresponding to C terminal 200 amino acids of human T-box 22
Formulation:	PBS pH7.3, 0.05% NaN <sub>3</sub> , 50% glycerol
Concentration:	lot specific
Purification:	Antigen affinity purification
Conjugation:	Unconjugated
Storage:	Store at -20°C as received.
Stability:	Stable for 12 months from date of receipt.
Gene Name:	T-box 22
Database Link:	<a href="#">NP_058650</a> <a href="#">Entrez Gene 50945 Human</a> <a href="#">Q9Y458</a>
Background:	This gene is a member of a phylogenetically conserved family of genes that share a common DNA-binding domain; the T-box. T-box genes encode transcription factors involved in the regulation of developmental processes. Mutations in this gene have been associated with the inherited X-linked disorder; Cleft palate with ankyloglossia; and it is believed to play a major role in human palatogenesis. Alternatively spliced transcript variants encoding different isoforms have been found for this gene.
Synonyms:	ABERS; CLPA; CPX; dj795G23.1; TBXX
Protein Families:	Transcription Factors



[View online »](#)

**Product images:**

Immunohistochemistry of paraffin-embedded Human cervical cancer tissue using TA323773 (TBX22 Antibody) at dilution 1/15 (Original magnification:  $\times 200$ )



Immunohistochemistry of paraffin-embedded Human cervical cancer tissue using TA323773 (TBX22 Antibody) at dilution 1/15, treated with fusion protein. (Original magnification:  $\times 200$ )