

## Product datasheet for **TA323771S**

### CAP1 Rabbit Polyclonal Antibody

#### Product data:

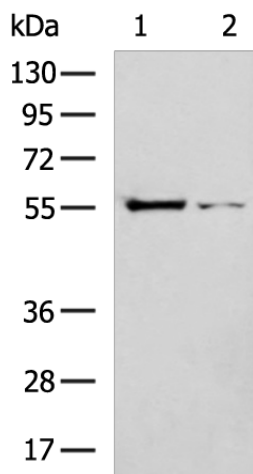
Product Type:	Primary Antibodies
Applications:	IHC, WB
Recommended Dilution:	WB: 1000-5000 WB positive control: 293T and HepG2 cell lysates IHC: 50-200 Positive control: Human cervical cancer Predicted cell location: Cytoplasm and Cell membrane
Reactivity:	Human, Mouse, Rat
Host:	Rabbit
Isotype:	IgG
Clonality:	Polyclonal
Immunogen:	Fusion protein corresponding to a region derived from 319-453 amino acids of Human Adenylyl cyclase-associated protein 1
Formulation:	PBS pH7.3, 0.05% NaN <sub>3</sub> , 50% glycerol
Purification:	Antigen affinity purification
Conjugation:	Unconjugated
Storage:	Store at -20°C as received.
Stability:	Stable for 12 months from date of receipt.
Predicted Protein Size:	52 kDa
Gene Name:	CAP, adenylate cyclase-associated protein 1 (yeast)
Database Link:	<a href="#">NP_001099000</a> <a href="#">Entrez Gene 12331 Mouse</a> <a href="#">Entrez Gene 64185 Rat</a> <a href="#">Entrez Gene 10487 Human</a> <a href="#">Q01518</a>
Background:	The protein encoded by this gene is related to the <i>S. cerevisiae</i> CAP protein; which is involved in the cyclic AMP pathway. The human protein is able to interact with other molecules of the same protein; as well as with CAP2 and actin. Alternatively spliced transcript variants have been identified.
Synonyms:	CAP; CAP1-PEN



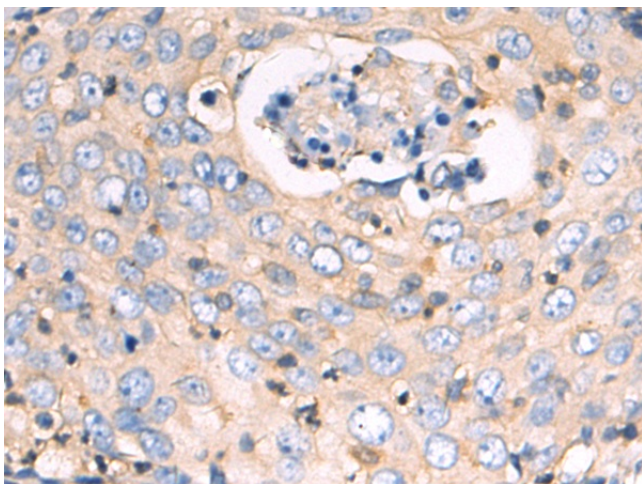
[View online »](#)

Protein Families: Druggable Genome

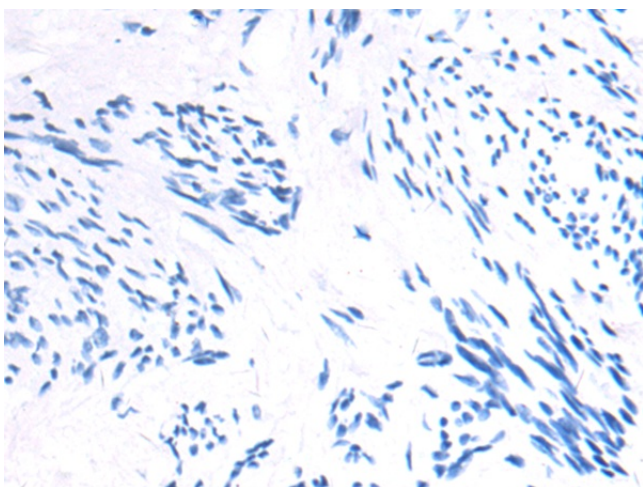
### Product images:



Gel: 10%SDS-PAGE  
Lysate: 30  $\mu$ g  
Lane 1-2: HeLa cells  
HepG2 cells  
Primary antibody: [TA323771] (CAP1 Antibody) at dilution 1/250  
Secondary antibody: Goat anti rabbit IgG at 1/8000 dilution  
Exposure time: 20 minutes



Immunohistochemistry of paraffin-embedded Human skin tissue using [TA323771] (CAP1 Antibody) at dilution 1/50 (Original magnification:  $\times$ 200)



Immunohistochemistry of paraffin-embedded Human skin tissue using [TA323771] (CAP1 Antibody) at dilution 1/50, treated with fusion protein. (Original magnification:  $\times 200$ )