

Product datasheet for **TA323771**

CAP1 Rabbit Polyclonal Antibody

Product data:

Product Type:	Primary Antibodies
Applications:	IHC, WB
Recommended Dilution:	WB: 1000-5000 WB positive control: 293T and HepG2 cell lysates IHC: 50-200 Positive control: Human cervical cancer Predicted cell location: Cytoplasm and Cell membrane
Reactivity:	Human, Mouse, Rat
Host:	Rabbit
Isotype:	IgG
Clonality:	Polyclonal
Immunogen:	Fusion protein corresponding to a region derived from 319-453 amino acids of Human Adenylyl cyclase-associated protein 1
Formulation:	PBS pH7.3, 0.05% NaN ₃ , 50% glycerol
Concentration:	lot specific
Purification:	Antigen affinity purification
Conjugation:	Unconjugated
Storage:	Store at -20°C as received.
Stability:	Stable for 12 months from date of receipt.
Predicted Protein Size:	52 kDa
Gene Name:	CAP, adenylate cyclase-associated protein 1 (yeast)
Database Link:	NP_001099000 Entrez Gene 12331 Mouse Entrez Gene 64185 Rat Entrez Gene 10487 Human Q01518
Background:	The protein encoded by this gene is related to the <i>S. cerevisiae</i> CAP protein; which is involved in the cyclic AMP pathway. The human protein is able to interact with other molecules of the same protein; as well as with CAP2 and actin. Alternatively spliced transcript variants have been identified.

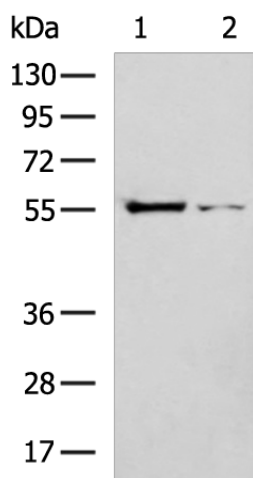


[View online »](#)

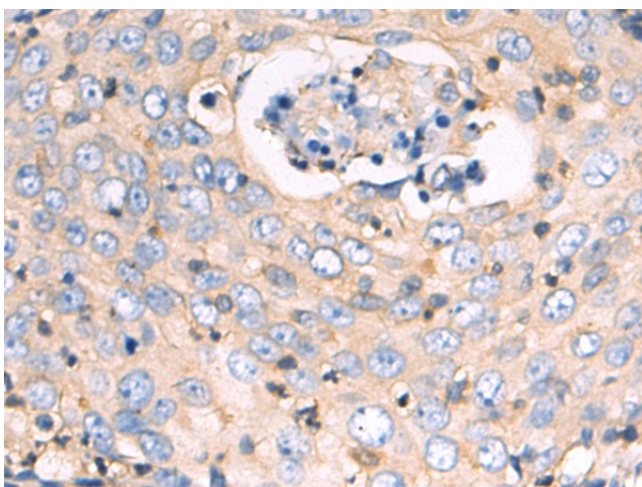
Synonyms: CAP; CAP1-PEN

Protein Families: Druggable Genome

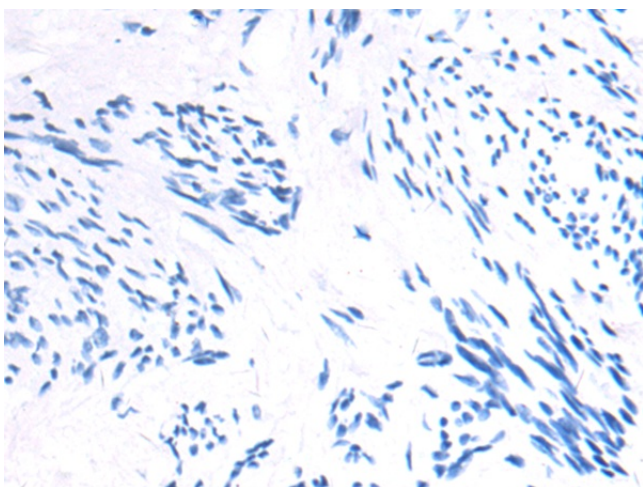
Product images:



Gel: 10%SDS-PAGE
Lysate: 30 μ g
Lane 1-2: HeLa cells
HepG2 cells
Primary antibody: TA323771 (CAP1 Antibody) at dilution 1/250
Secondary antibody: Goat anti rabbit IgG at 1/8000 dilution
Exposure time: 20 minutes



Immunohistochemistry of paraffin-embedded Human skin tissue using TA323771 (CAP1 Antibody) at dilution 1/50 (Original magnification: \times 200)



Immunohistochemistry of paraffin-embedded Human skin tissue using TA323771 (CAP1 Antibody) at dilution 1/50, treated with fusion protein. (Original magnification: $\times 200$)