

Product datasheet for **TA323770**

Paxillin (PXN) Rabbit Polyclonal Antibody

Product data:

Product Type:	Primary Antibodies
Applications:	WB
Recommended Dilution:	WB: 1:500-1000
Reactivity:	Human, Mouse, Rat
Modifications:	Phospho-specific
Host:	Rabbit
Isotype:	IgG
Clonality:	Polyclonal
Immunogen:	Peptide sequence around phosphorylation site of tyrosine 31 (T-P-Y(p)-S-Y) derived from Human Paxillin.
Formulation:	PBS pH7.3, 0.05% NaN ₃ , 50% glycerol
Concentration:	lot specific
Purification:	Antigen affinity purification
Conjugation:	Unconjugated
Storage:	Store at -20°C as received.
Stability:	Stable for 12 months from date of receipt.
Predicted Protein Size:	65 kDa
Gene Name:	paxillin
Database Link:	NP_079433 Entrez Gene 19303 Mouse Entrez Gene 360820 Rat Entrez Gene 5829 Human P49023
Background:	An antiphosphotyrosine antibody was used to identify proteins that are phosphorylated in Rous sarcoma virus-transformed chick embryo fibroblasts, and a 76-kD protein was obtained that localizes to focal adhesions at the ends of actin-containing stress fibers in nontransformed cells (Ref.1). This protein was purified from chicken gizzard smooth muscle, and was named Pxn (Paxillin) ('paxillus' means 'small stake' or 'peg' in Latin) as a protein tethered to the membrane at focal adhesions

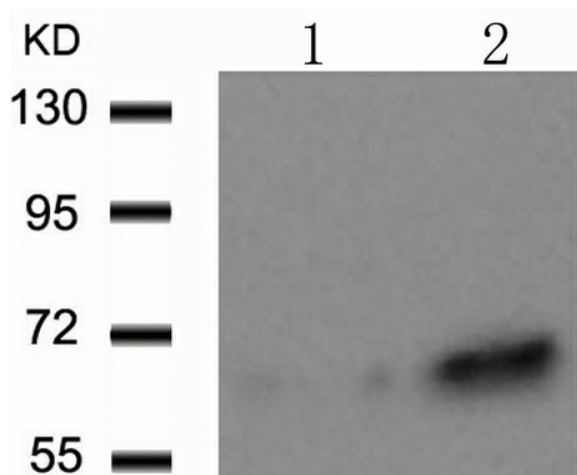


[View online »](#)

Synonyms: FLJ16691

Protein Families: Druggable Genome, Stem cell - Pluripotency

Protein Pathways: Chemokine signaling pathway, Focal adhesion, Leukocyte transendothelial migration, Regulation of actin cytoskeleton, VEGF signaling pathway

Product images:

Predicted band size: 65 kDa. Positive control: HT29 cells treated with PMA lysate.
Recommended dilution: 1/ 500-1000. (Gel: 8%SDS-PAGE Lane 1: HT29 cells untreated with PMA lysate Lane 2: HT29 cells treated with PMA lysate Lysates: 30 ug per lane Primary antibody: 1/500 dilution Secondary antibody: Goat anti Rabbit IgG - H&L (HRP) at 1/10000 dilution Exposure time: 1 minute)