

Product datasheet for **TA323767S**

MITF Rabbit Polyclonal Antibody

Product data:

Product Type:	Primary Antibodies
Applications:	IHC, WB
Recommended Dilution:	WB: 200-1000 WB positive control: Mouse kidney tissue and Mouse liver tissue lysates IHC: 40-200 Positive control: Human thyroid cancer Predicted cell location: Nucleus
Reactivity:	Human, Mouse, Rat
Host:	Rabbit
Isotype:	IgG
Clonality:	Polyclonal
Immunogen:	Fusion protein corresponding to C terminal 173 amino acids of human matrix metalloproteinase 28
Formulation:	PBS pH7.3, 0.05% NaN ₃ , 50% glycerol
Purification:	Antigen affinity purification
Conjugation:	Unconjugated
Storage:	Store at -20°C as received.
Stability:	Stable for 12 months from date of receipt.
Predicted Protein Size:	47 kDa
Gene Name:	melanogenesis associated transcription factor
Database Link:	NP_000239 Entrez Gene 17342 Mouse Entrez Gene 25094 Rat Entrez Gene 4286 Human O75030



[View online »](#)

Background:

This gene encodes a transcription factor that contains both basic helix-loop-helix and leucine zipper structural features. It regulates the differentiation and development of melanocytes retinal pigment epithelium and is also responsible for pigment cell-specific transcription of the melanogenesis enzyme genes. Heterozygous mutations in the this gene cause auditory-pigmentary syndromes; such as Waardenburg syndrome type 2 and Tietz syndrome. Alternatively spliced transcript variants encoding different isoforms have been identified.

Synonyms:

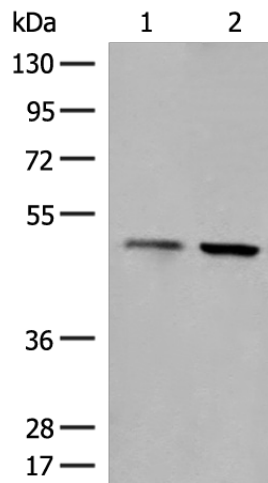
bHLHe32; CMM8; MI; WS2; WS2A

Protein Families:

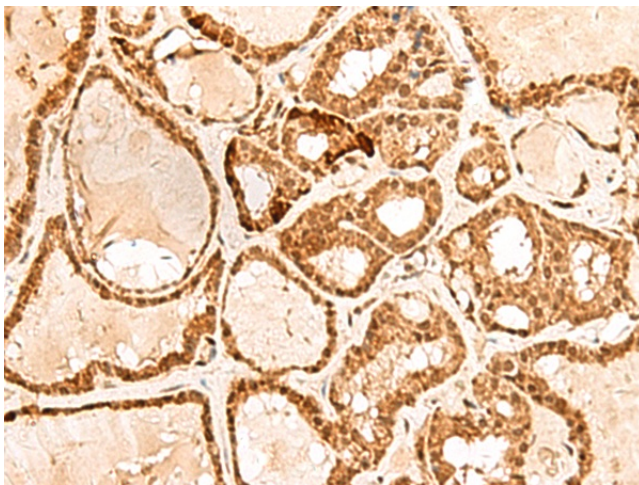
Druggable Genome, Transcription Factors

Protein Pathways:

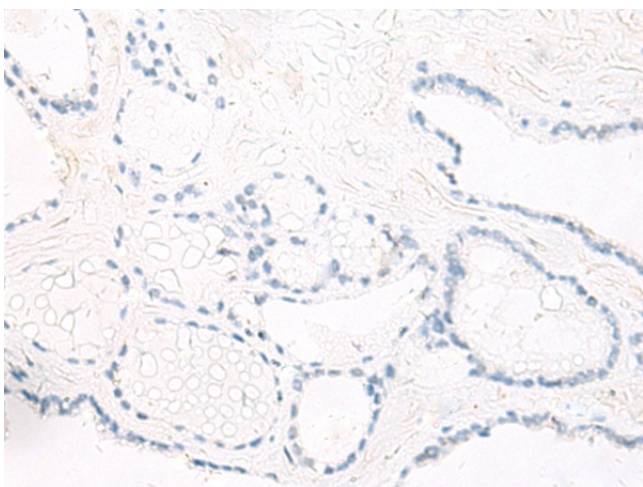
Melanogenesis, Melanoma, Pathways in cancer

Product images:


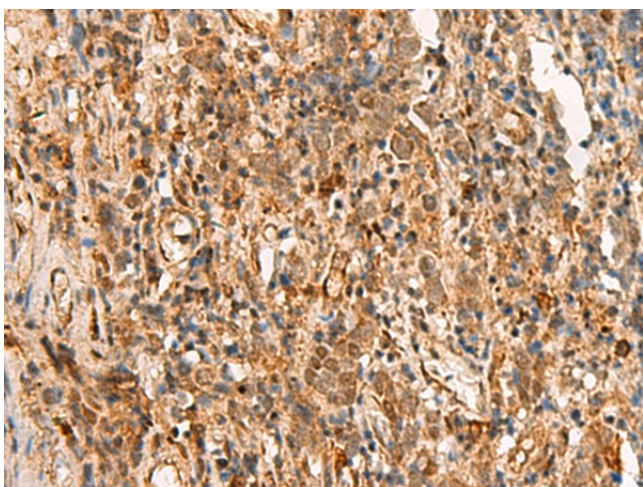
Gel: 8%SDS-PAGE
 Lysate: 40 µg
 Lane 1-2: Mouse kidney tissue and Mouse liver tissue lysates
 Primary antibody: [TA323767] (MITF Antibody) at dilution 1/200
 Secondary antibody: Goat anti rabbit IgG at 1/8000 dilution
 Exposure time: 15 seconds



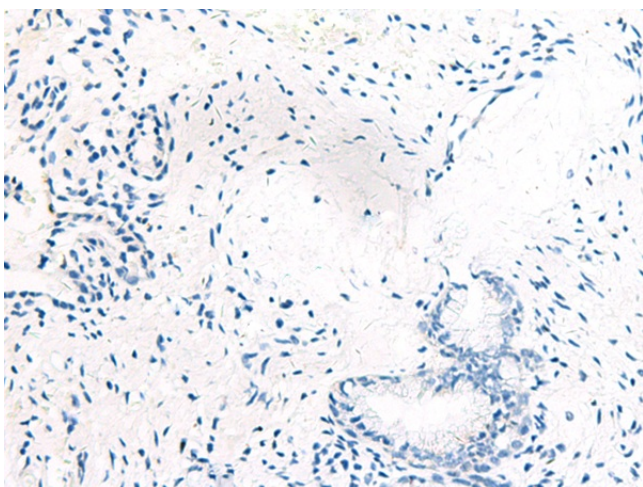
Immunohistochemistry of paraffin-embedded Human thyroid cancer tissue using [TA323767] (MITF Antibody) at dilution 1/55 (Original magnification: ×200)



Immunohistochemistry of paraffin-embedded Human thyroid cancer tissue using [TA323767] (MITF Antibody) at dilution 1/55, treated with fusion protein. (Original magnification: $\times 200$)



Immunohistochemistry of paraffin-embedded Human cervical cancer tissue using [TA323767] (MITF Antibody) at dilution 1/55 (Original magnification: $\times 200$)



Immunohistochemistry of paraffin-embedded Human cervical cancer tissue using [TA323767] (MITF Antibody) at dilution 1/55, treated with fusion protein. (Original magnification: $\times 200$)