

Product datasheet for **TA323764**

ADA Rabbit Polyclonal Antibody

Product data:

Product Type:	Primary Antibodies
Applications:	IHC, WB
Recommended Dilution:	WB: 200-1000 WB positive control: Raji cells IHC: 15-50 Positive control: Human breast cancer Predicted cell location: Cytoplasm
Reactivity:	Human, Mouse, Rat
Host:	Rabbit
Isotype:	IgG
Clonality:	Polyclonal
Immunogen:	Fusion protein corresponding to C terminal 250 amino acids of human adenosine deaminase
Formulation:	PBS pH7.3, 0.05% NaN ₃ , 50% glycerol
Concentration:	lot specific
Purification:	Antigen affinity purification
Conjugation:	Unconjugated
Storage:	Store at -20°C as received.
Stability:	Stable for 12 months from date of receipt.
Predicted Protein Size:	41 kDa
Gene Name:	adenosine deaminase
Database Link:	NP_000013 Entrez Gene 11486 Mouse Entrez Gene 24165 Rat Entrez Gene 100 Human P00813



[View online »](#)

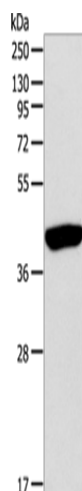
Background: This gene encodes an enzyme that catalyzes the hydrolysis of adenosine to inosine. Various mutations have been described for this gene and have been linked to human diseases. Deficiency in this enzyme causes a form of severe combined immunodeficiency disease (SCID), in which there is dysfunction of both B and T lymphocytes with impaired cellular immunity and decreased production of immunoglobulins, whereas elevated levels of this enzyme have been associated with congenital hemolytic anemia.

Synonyms: adenosine aminohydrolase; adenosine deaminase

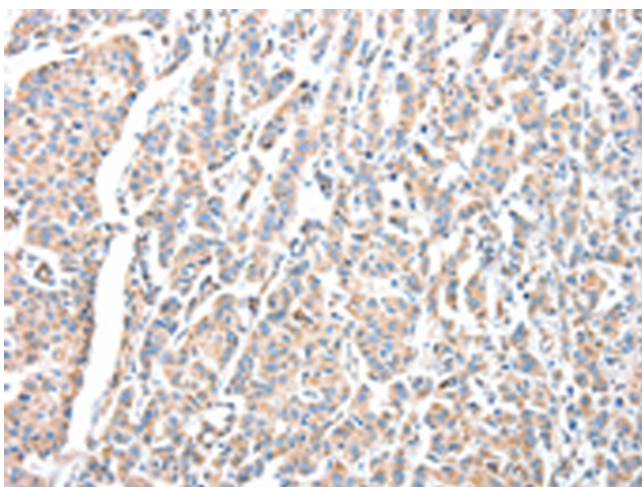
Protein Families: Druggable Genome

Protein Pathways: Metabolic pathways, Primary immunodeficiency, Purine metabolism

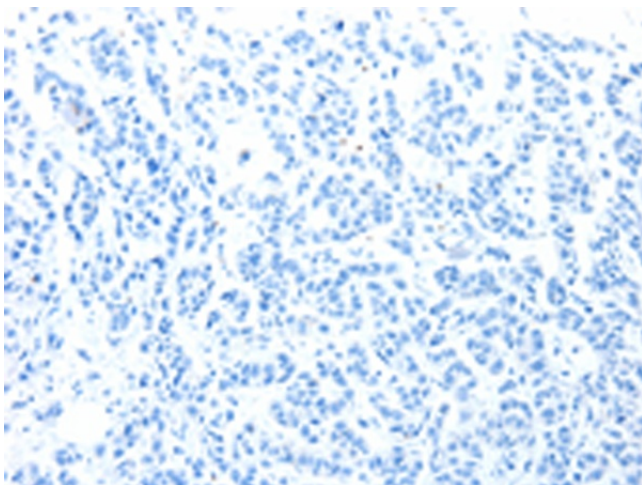
Product images:



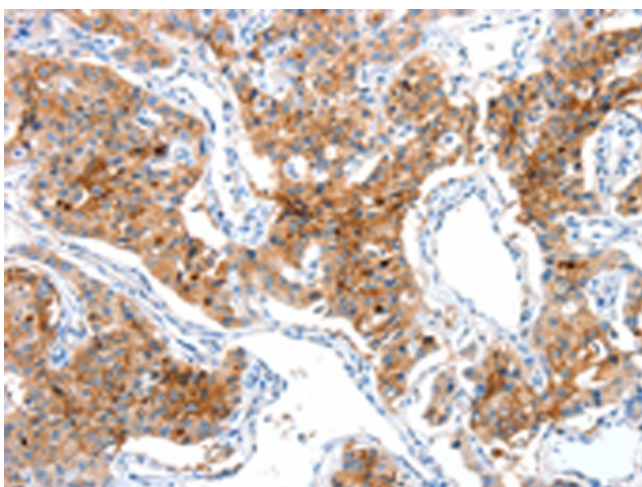
Gel: 10%SDS-PAGE
Lysate: 40 μ g
Lane: Raji cells
Primary antibody: TA323764 (ADA Antibody) at dilution 1/100
Secondary antibody: Goat anti rabbit IgG at 1/8000 dilution
Exposure time: 1 minute



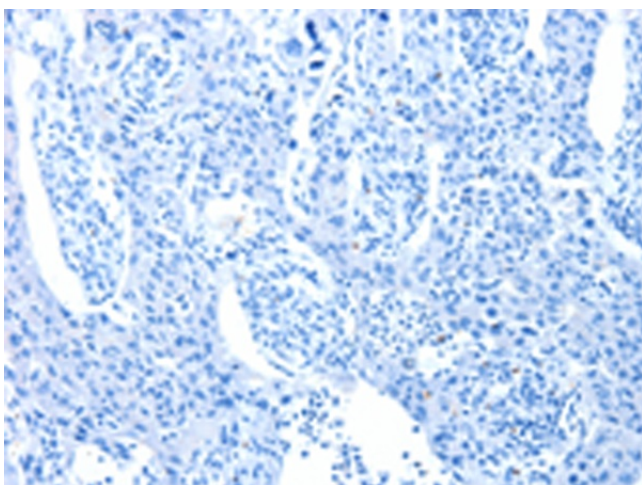
Immunohistochemistry of paraffin-embedded Human breast cancer tissue using TA323764 (ADA Antibody) at dilution 1/15 (Original magnification: \times 200)



Immunohistochemistry of paraffin-embedded Human breast cancer tissue using TA323764 (ADA Antibody) at dilution 1/15, treated with fusion protein. (Original magnification: $\times 200$)



Immunohistochemistry of paraffin-embedded Human lung cancer tissue using TA323764 (ADA Antibody) at dilution 1/15 (Original magnification: $\times 200$)



Immunohistochemistry of paraffin-embedded Human lung cancer tissue using TA323764 (ADA Antibody) at dilution 1/15, treated with fusion protein. (Original magnification: $\times 200$)