

## Product datasheet for **TA323761**

### Adenylosuccinate Lyase (ADSL) Rabbit Polyclonal Antibody

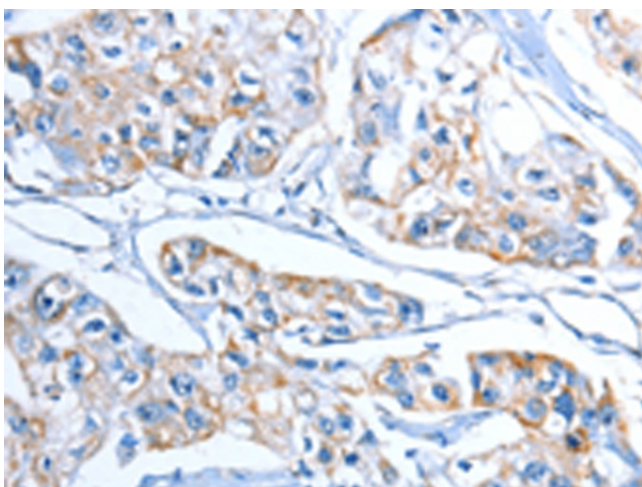
#### Product data:

Product Type:	Primary Antibodies
Applications:	IHC
Recommended Dilution:	IHC: 15-50 Positive control: Human breast cancer Predicted cell location: Cytoplasm
Reactivity:	Human, Mouse
Host:	Rabbit
Isotype:	IgG
Clonality:	Polyclonal
Immunogen:	Fusion protein corresponding to C terminal 250 amino acids of human adenylosuccinate lyase
Formulation:	PBS pH7.3, 0.05% NaN <sub>3</sub> , 50% glycerol
Concentration:	lot specific
Purification:	Antigen affinity purification
Conjugation:	Unconjugated
Storage:	Store at -20°C as received.
Stability:	Stable for 12 months from date of receipt.
Gene Name:	adenylosuccinate lyase
Database Link:	<a href="#">NP_000017</a> <a href="#">Entrez Gene 11564 Mouse</a> <a href="#">Entrez Gene 158 Human</a> <a href="#">P30566</a>

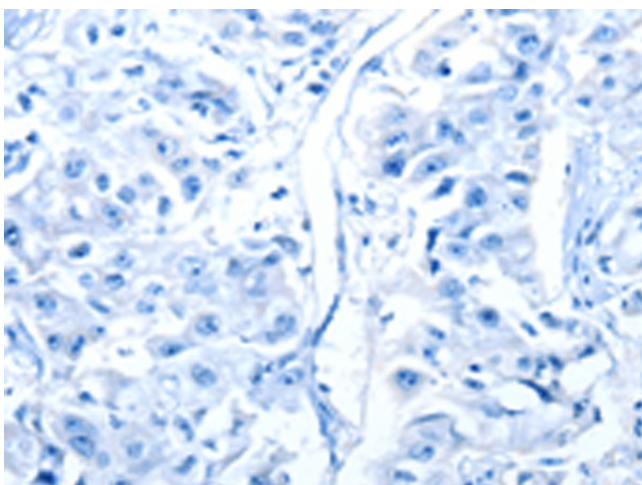


[View online »](#)

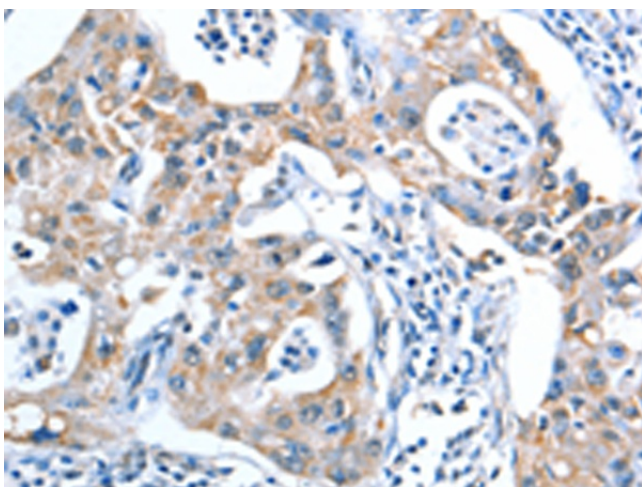
- Background:** Adenylosuccinate lyase is involved in both de novo synthesis of purines and formation of adenosine monophosphate from inosine monophosphate. It catalyzes two reactions in AMP biosynthesis: the removal of a fumarate from succinylaminoimidazole carboxamide (SAICA) ribotide to give aminoimidazole carboxamide ribotide (AICA) and removal of fumarate from adenylosuccinate to give AMP. Adenylosuccinase deficiency results in succinylpurinemic autism, psychomotor retardation, and , in some cases, growth retardation associated with muscle wasting and epilepsy. Two transcript variants encoding different isoforms have been found for this gene.
- Synonyms:** AMPS; ASASE; ASL
- Protein Families:** Druggable Genome
- Protein Pathways:** Alanine, aspartate and glutamate metabolism, Metabolic pathways, Purine metabolism

**Product images:**

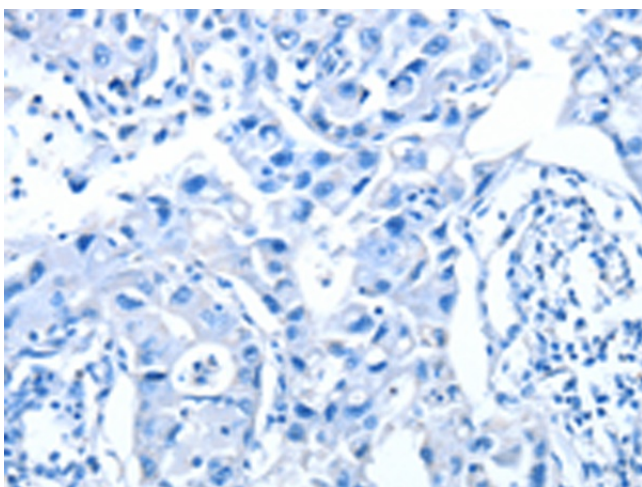
Immunohistochemistry of paraffin-embedded Human breast cancer tissue using TA323761 (ADSL Antibody) at dilution 1/20 (Original magnification: x200)



Immunohistochemistry of paraffin-embedded Human breast cancer tissue using TA323761 (ADSL Antibody) at dilution 1/20, treated with fusion protein. (Original magnification: x200)



Immunohistochemistry of paraffin-embedded Human lung cancer tissue using TA323761 (ADSL Antibody) at dilution 1/20 (Original magnification: ×200)



Immunohistochemistry of paraffin-embedded Human lung cancer tissue using TA323761 (ADSL Antibody) at dilution 1/20, treated with fusion protein. (Original magnification: ×200)