

## Product datasheet for **TA323760S**

### beta 3 Adrenergic Receptor (ADRB3) Rabbit Polyclonal Antibody

#### Product data:

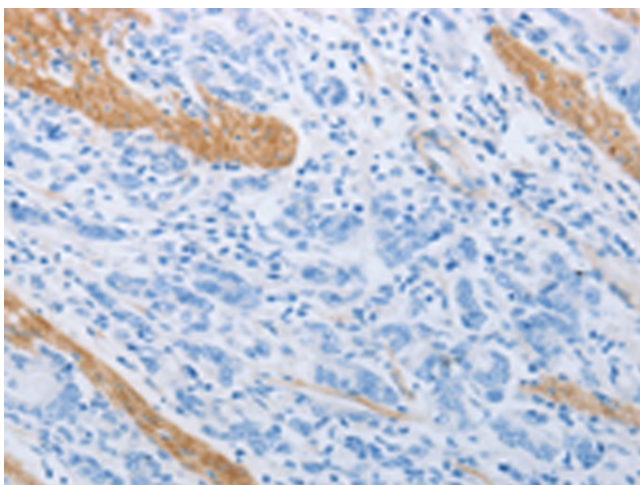
Product Type:	Primary Antibodies
Applications:	IHC
Recommended Dilution:	IHC: 15-50 Positive control: Human gastric cancer Predicted cell location: Cytoplasm, Cell membrane
Reactivity:	Human
Host:	Rabbit
Isotype:	IgG
Clonality:	Polyclonal
Immunogen:	Synthetic peptide corresponding to a region derived from 21-33 amino acids of Human adrenoceptor beta 3
Formulation:	PBS pH7.3, 0.05% NaN <sub>3</sub> , 50% glycerol
Concentration:	lot specific
Purification:	Antigen affinity purification
Conjugation:	Unconjugated
Storage:	Store at -20°C as received.
Stability:	Stable for 12 months from date of receipt.
Gene Name:	adrenoceptor beta 3
Database Link:	<a href="#">NP_000016</a> <a href="#">Entrez Gene 155 Human</a> <a href="#">P13945</a>
Background:	The protein encoded by this gene belongs to the family of beta adrenergic receptors; which mediate catecholamine-induced activation of adenylate cyclase through the action of G proteins. This receptor is located mainly in the adipose tissue and is involved in the regulation of lipolysis and thermogenesis.
Synonyms:	BETA3AR
Protein Families:	Druggable Genome, GPCR, Transmembrane



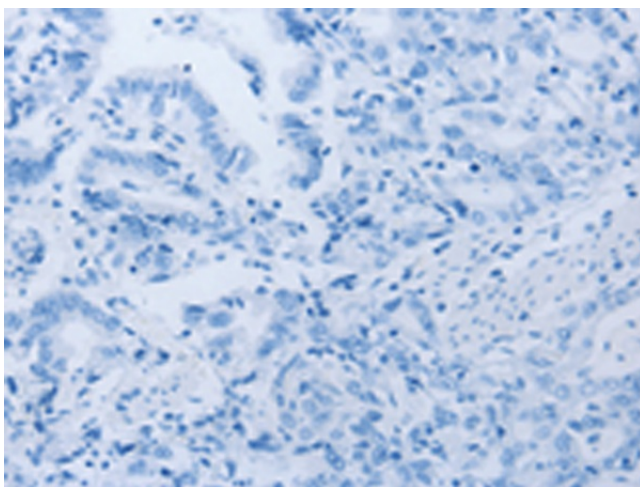
[View online »](#)

Protein Pathways: Calcium signaling pathway, Endocytosis, Neuroactive ligand-receptor interaction

**Product images:**



Immunohistochemistry of paraffin-embedded Human gastric cancer tissue using [TA323760] (ADRB3 Antibody) at dilution 1/20 (Original magnification:  $\times 200$ )



Immunohistochemistry of paraffin-embedded Human gastric cancer tissue using [TA323760] (ADRB3 Antibody) at dilution 1/20, treated with synthetic peptide. (Original magnification:  $\times 200$ )