

## Product datasheet for **TA323758S**

### beta 2 Adrenergic Receptor (ADRB2) Rabbit Polyclonal Antibody

#### Product data:

|                         |   |
|-------------------------|---|
| Product Type:           | Primary Antibodies  |
| Applications:           | IHC, WB   |
| Recommended Dilution:   | WB: 1000-2000<br>WB positive control: Hela and A549 cells<br>IHC: 15-50<br>Positive control: Human liver cancer<br>Predicted cell location: Cytoplasm |
| Reactivity:             | Human, Mouse  |
| Host:                   | Rabbit  |
| Isotype:                | IgG   |
| Clonality:              | Polyclonal  |
| Immunogen:              | Synthetic peptide corresponding to a region derived from 21-33 amino acids of Human adrenoceptor beta 2, surface                                      |
| Formulation:            | PBS pH7.3, 0.05% NaN <sub>3</sub> , 50% glycerol  |
| Purification:           | Antigen affinity purification   |
| Conjugation:            | Unconjugated  |
| Storage:                | Store at -20°C as received.   |
| Stability:              | Stable for 12 months from date of receipt.  |
| Predicted Protein Size: | 46 kDa  |
| Gene Name:              | adrenoceptor beta 2   |
| Database Link:          | <a href="#">NP_000015</a><br><a href="#">Entrez Gene 11555 Mouse</a> <a href="#">Entrez Gene 154 Human</a><br><a href="#">P07550</a>                  |



[View online »](#)

**Background:**

This gene encodes beta-2-adrenergic receptor which is a member of the G protein-coupled receptor superfamily. This receptor is directly associated with one of its ultimate effectors; the class C L-type calcium channel Ca(V)1.2. This receptor-channel complex also contains a G protein; an adenylyl cyclase; cAMP-dependent kinase; and the counterbalancing phosphatase; PP2A. The assembly of the signaling complex provides a mechanism that ensures specific and rapid signaling by this G protein-coupled receptor. This gene is intronless. Different polymorphic forms; point mutations; and/or downregulation of this gene are associated with nocturnal asthma; obesity and type 2 diabetes.?

**Synonyms:**

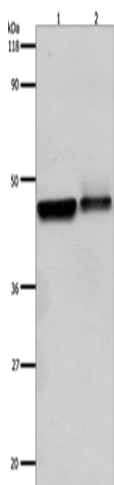
ADRB2R; ADRBR; B2AR; BAR; BETA2AR

**Protein Families:**

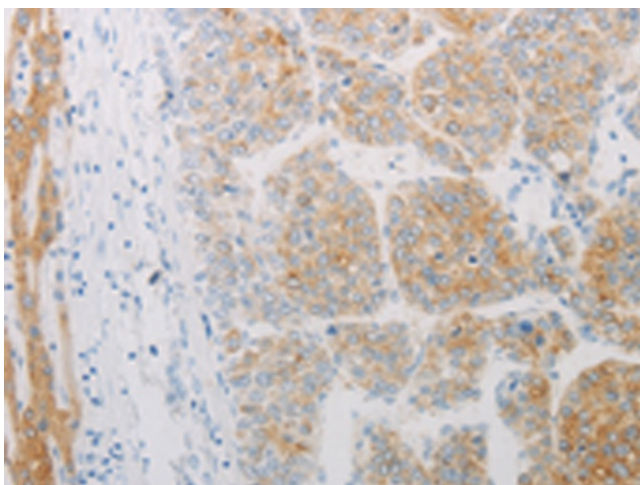
Druggable Genome, GPCR, Transmembrane

**Protein Pathways:**

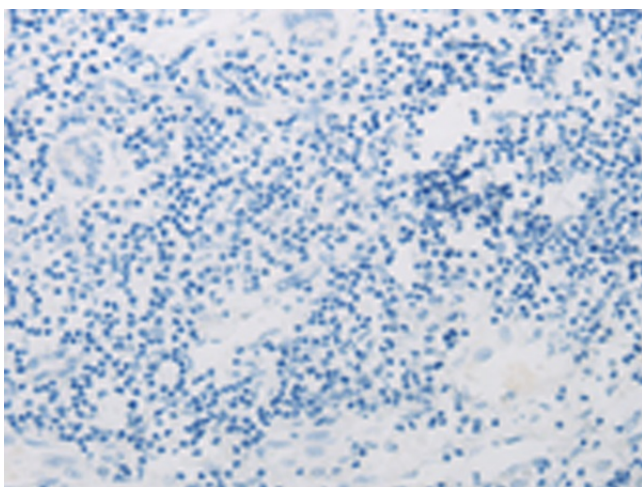
Calcium signaling pathway, Endocytosis, Neuroactive ligand-receptor interaction

**Product images:**

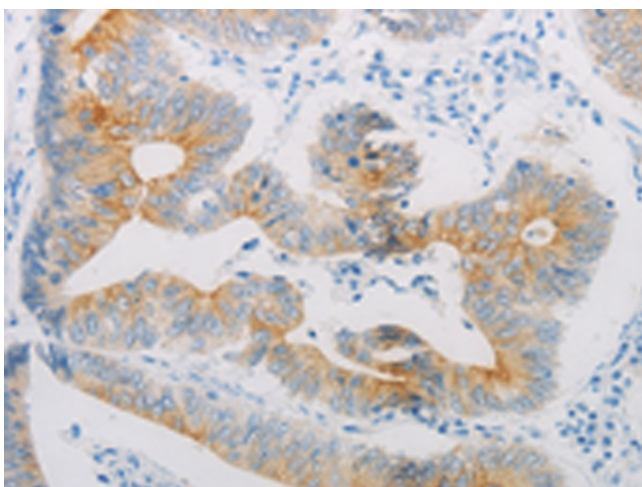
Gel: 10%SDS-PAGE  
Lysate: 30 µg  
Lane 1-2: HeLa cells  
A549 cells  
Primary antibody: [TA323758] (ADRB2 Antibody)  
at dilution 1/600  
Secondary antibody: Goat anti rabbit IgG at  
1/8000 dilution  
Exposure time: 1 minute



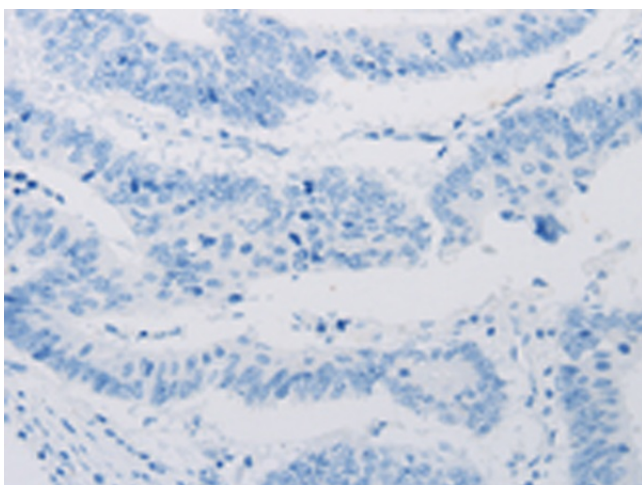
Immunohistochemistry of paraffin-embedded  
Human liver cancer tissue using [TA323758]  
(ADRB2 Antibody) at dilution 1/20 (Original  
magnification: ×200)



Immunohistochemistry of paraffin-embedded Human liver cancer tissue using [TA323758] (ADRB2 Antibody) at dilution 1/20, treated with synthetic peptide. (Original magnification:  $\times 200$ )



Immunohistochemistry of paraffin-embedded Human colon cancer tissue using [TA323758] (ADRB2 Antibody) at dilution 1/20 (Original magnification:  $\times 200$ )



Immunohistochemistry of paraffin-embedded Human colon cancer tissue using [TA323758] (ADRB2 Antibody) at dilution 1/20, treated with synthetic peptide. (Original magnification:  $\times 200$ )