

## Product datasheet for **TA323758**

### beta 2 Adrenergic Receptor (ADRB2) Rabbit Polyclonal Antibody

#### Product data:

Product Type:	Primary Antibodies
Applications:	IHC, WB
Recommended Dilution:	WB: 1000-2000 WB positive control: Hela and A549 cells IHC: 15-50 Positive control: Human liver cancer Predicted cell location: Cytoplasm
Reactivity:	Human, Mouse
Host:	Rabbit
Isotype:	IgG
Clonality:	Polyclonal
Immunogen:	Synthetic peptide corresponding to a region derived from 21-33 amino acids of Human adrenoceptor beta 2, surface
Formulation:	PBS pH7.3, 0.05% NaN <sub>3</sub> , 50% glycerol
Concentration:	lot specific
Purification:	Antigen affinity purification
Conjugation:	Unconjugated
Storage:	Store at -20°C as received.
Stability:	Stable for 12 months from date of receipt.
Predicted Protein Size:	46 kDa
Gene Name:	adrenoceptor beta 2
Database Link:	<a href="#">NP_000015</a> <a href="#">Entrez Gene 11555 Mouse</a> <a href="#">Entrez Gene 154 Human</a> <a href="#">P07550</a>



[View online »](#)

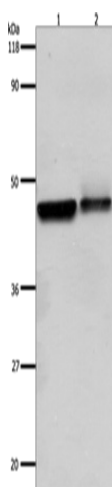
**Background:** This gene encodes beta-2-adrenergic receptor which is a member of the G protein-coupled receptor superfamily. This receptor is directly associated with one of its ultimate effectors; the class C L-type calcium channel Ca(V)1.2. This receptor-channel complex also contains a G protein; an adenylyl cyclase; cAMP-dependent kinase; and the counterbalancing phosphatase; PP2A. The assembly of the signaling complex provides a mechanism that ensures specific and rapid signaling by this G protein-coupled receptor. This gene is intronless. Different polymorphic forms; point mutations; and/or downregulation of this gene are associated with nocturnal asthma; obesity and type 2 diabetes.?

**Synonyms:** ADRB2R; ADRBR; B2AR; BAR; BETA2AR

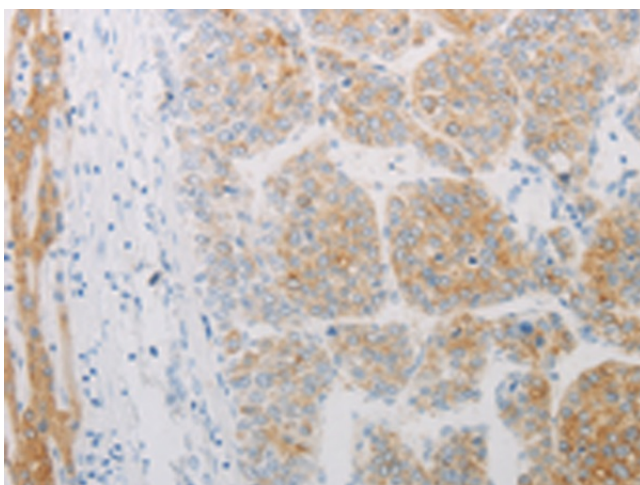
**Protein Families:** Druggable Genome, GPCR, Transmembrane

**Protein Pathways:** Calcium signaling pathway, Endocytosis, Neuroactive ligand-receptor interaction

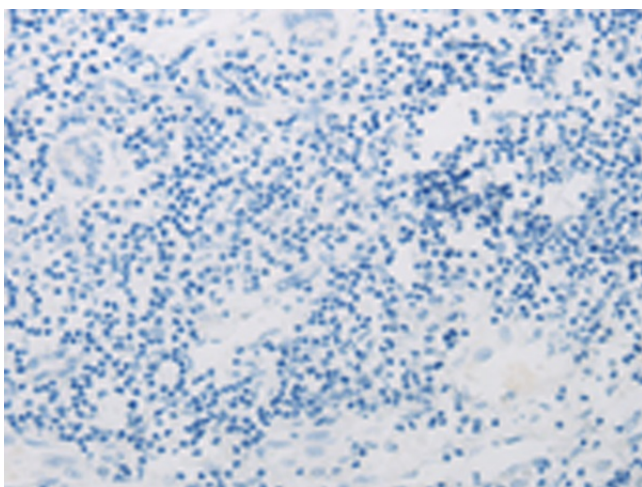
**Product images:**



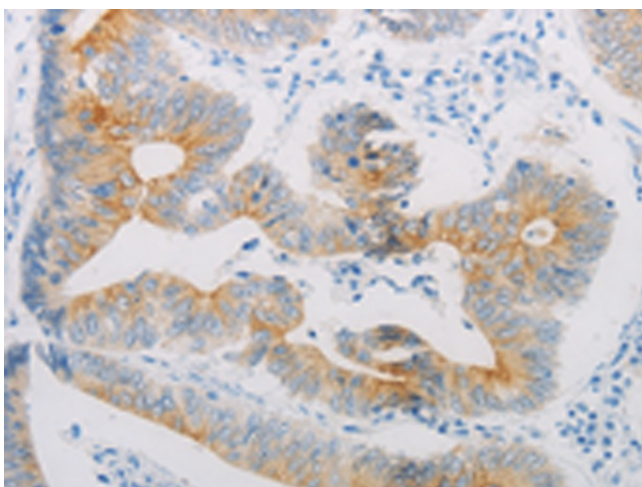
Gel: 10%SDS-PAGE  
Lysate: 30 µg  
Lane 1-2: HeLa cells  
A549 cells  
Primary antibody: TA323758 (ADRB2 Antibody) at dilution 1/600  
Secondary antibody: Goat anti rabbit IgG at 1/8000 dilution  
Exposure time: 1 minute



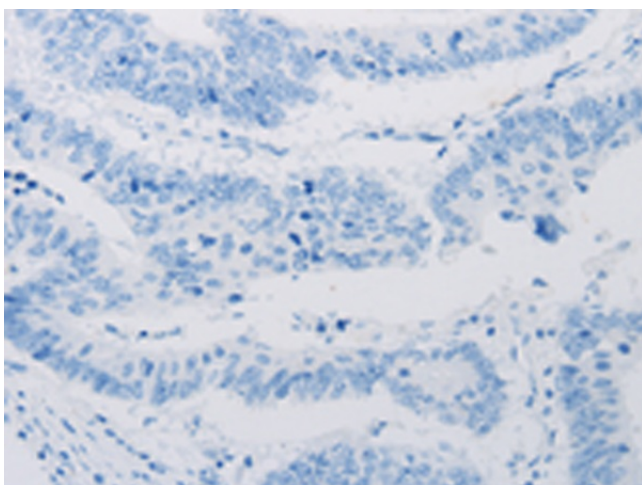
Immunohistochemistry of paraffin-embedded Human liver cancer tissue using TA323758 (ADRB2 Antibody) at dilution 1/20 (Original magnification: ×200)



Immunohistochemistry of paraffin-embedded Human liver cancer tissue using TA323758 (ADRB2 Antibody) at dilution 1/20, treated with synthetic peptide. (Original magnification:  $\times 200$ )



Immunohistochemistry of paraffin-embedded Human colon cancer tissue using TA323758 (ADRB2 Antibody) at dilution 1/20 (Original magnification:  $\times 200$ )



Immunohistochemistry of paraffin-embedded Human colon cancer tissue using TA323758 (ADRB2 Antibody) at dilution 1/20, treated with synthetic peptide. (Original magnification:  $\times 200$ )