

Product datasheet for **TA323757**

beta 2 Adrenergic Receptor (ADRB2) Rabbit Polyclonal Antibody

Product data:

Product Type:	Primary Antibodies
Applications:	WB
Recommended Dilution:	WB: 200-1000 WB positive control: Human liver cancer tissue
Reactivity:	Human, Mouse
Host:	Rabbit
Isotype:	IgG
Clonality:	Polyclonal
Immunogen:	Synthetic peptide peptide corresponding to a region derived from 21-33 amino acids of human adrenoceptor beta 2, surface
Formulation:	PBS pH7.3, 0.05% NaN ₃ , 50% glycerol
Concentration:	lot specific
Purification:	Antigen affinity purification
Conjugation:	Unconjugated
Storage:	Store at -20°C as received.
Stability:	Stable for 12 months from date of receipt.
Predicted Protein Size:	46 kDa
Gene Name:	adrenoceptor beta 2
Database Link:	NP_000015 Entrez Gene 11555 Mouse Entrez Gene 154 Human P07550



[View online »](#)

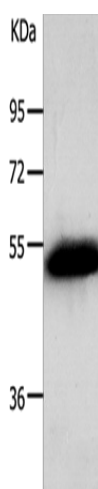
Background: This gene encodes beta-2-adrenergic receptor which is a member of the G protein-coupled receptor superfamily. This receptor is directly associated with one of its ultimate effectors; the class C L-type calcium channel Ca(V)1.2. This receptor-channel complex also contains a G protein; an adenylyl cyclase; cAMP-dependent kinase; and the counterbalancing phosphatase; PP2A. The assembly of the signaling complex provides a mechanism that ensures specific and rapid signaling by this G protein-coupled receptor. This gene is intronless. Different polymorphic forms; point mutations; and/or downregulation of this gene are associated with nocturnal asthma; obesity and type 2 diabetes.?

Synonyms: ADRB2R; ADRBR; B2AR; BAR; BETA2AR

Protein Families: Druggable Genome, GPCR, Transmembrane

Protein Pathways: Calcium signaling pathway, Endocytosis, Neuroactive ligand-receptor interaction

Product images:



Gel: 10%SDS-PAGE
Lysate: 40 µg
Lane: Human liver cancer tissue
Primary antibody: TA323757 (ADRB2 Antibody) at dilution 1/300
Secondary antibody: Goat anti rabbit IgG at 1/8000 dilution
Exposure time: 30 seconds