

## Product datasheet for **TA323752**

### Apolipoprotein H (APOH) Rabbit Polyclonal Antibody

#### Product data:

Product Type:	Primary Antibodies
Applications:	IHC, WB
Recommended Dilution:	WB: 500-2000 WB positive control: Human testis tissue IHC: 25-100 Positive control: Human thyroid cancer Predicted cell location: Cytoplasm
Reactivity:	Human
Host:	Rabbit
Isotype:	IgG
Clonality:	Polyclonal
Immunogen:	Fusion protein corresponding to a region derived from 21-262 amino acids of human apolipoprotein H (beta-2-glycoprotein I)
Formulation:	PBS pH7.3, 0.05% NaN <sub>3</sub> , 50% glycerol
Concentration:	lot specific
Purification:	Antigen affinity purification
Conjugation:	Unconjugated
Storage:	Store at -20°C as received.
Stability:	Stable for 12 months from date of receipt.
Predicted Protein Size:	38 kDa
Gene Name:	apolipoprotein H
Database Link:	<a href="#">NP_000033</a> <a href="#">Entrez Gene 350 Human P02749</a>



[View online »](#)

**Background:** Apolipoprotein H has been implicated in a variety of physiologic pathways including lipoprotein metabolism, coagulation, and the production of antiphospholipid autoantibodies. APOH may be a required cofactor for anionic phospholipid binding by the antiphospholipid autoantibodies found in sera of many patients with lupus and primary antiphospholipid syndrome, but it does not seem to be required for the reactivity of antiphospholipid autoantibodies associated with infections.?

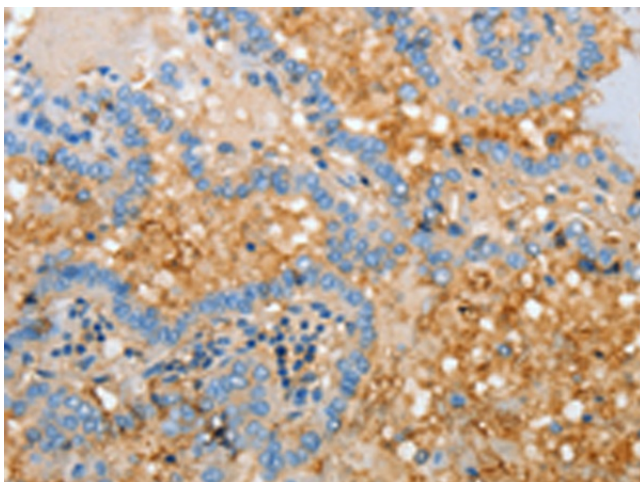
**Synonyms:** B2G1; B2GP1; BG

**Protein Families:** Druggable Genome, Secreted Protein

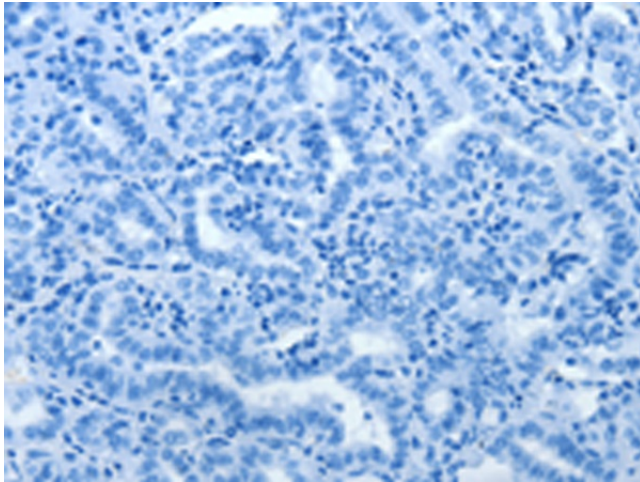
**Product images:**



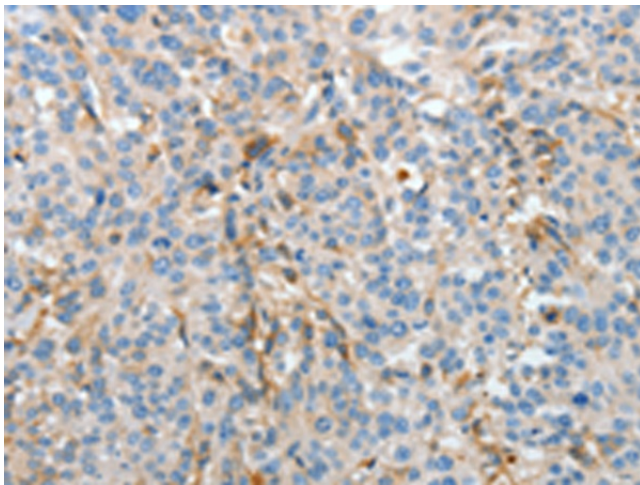
Gel: 10%SDS-PAGE  
Lysate: 40 µg  
Lane: Human testis tissue  
Primary antibody: TA323752 (APOH Antibody) at dilution 1/275  
Secondary antibody: Goat anti rabbit IgG at 1/8000 dilution  
Exposure time: 5 seconds



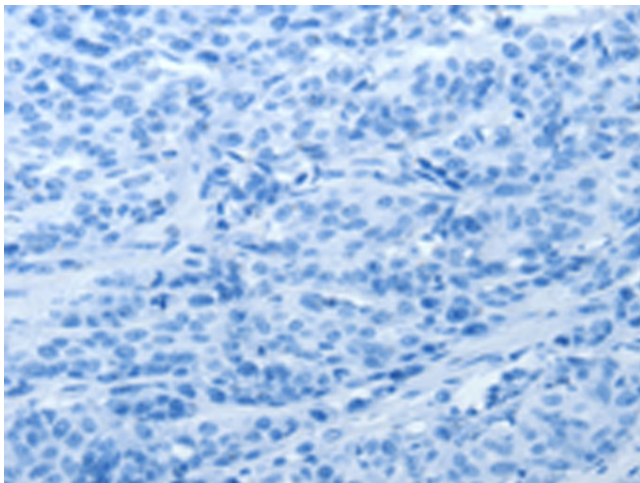
Immunohistochemistry of paraffin-embedded Human thyroid cancer tissue using TA323752 (APOH Antibody) at dilution 1/30 (Original magnification: x200)



Immunohistochemistry of paraffin-embedded Human thyroid cancer tissue using TA323752 (APOH Antibody) at dilution 1/30, treated with fusion protein. (Original magnification: ×200)



Immunohistochemistry of paraffin-embedded Human esophagus cancer tissue using TA323752 (APOH Antibody) at dilution 1/30 (Original magnification: ×200)



Immunohistochemistry of paraffin-embedded Human esophagus cancer tissue using TA323752 (APOH Antibody) at dilution 1/30, treated with fusion protein. (Original magnification: ×200)