

## Product datasheet for **TA323750**

### BRCA2 Rabbit Polyclonal Antibody

#### Product data:

Product Type:	Primary Antibodies
Applications:	IHC
Recommended Dilution:	IHC: 25-100 Positive control: Human lung cancer Predicted cell location: Nucleus
Reactivity:	Human
Host:	Rabbit
Isotype:	IgG
Clonality:	Polyclonal
Immunogen:	Synthetic peptide corresponding to a region derived from 110-124 amino acids of Human Breast cancer type 2 susceptibility protein
Formulation:	PBS pH7.3, 0.05% NaN <sub>3</sub> , 50% glycerol
Concentration:	lot specific
Purification:	Antigen affinity purification
Conjugation:	Unconjugated
Storage:	Store at -20°C as received.
Stability:	Stable for 12 months from date of receipt.
Predicted Protein Size:	384 kDa
Gene Name:	BRCA2, DNA repair associated
Database Link:	<a href="#">NP_000050</a> <a href="#">Entrez Gene 675 Human</a> <a href="#">P51587</a>



[View online »](#)

**Background:**

Inherited mutations in BRCA1 and this gene; BRCA2; confer increased lifetime risk of developing breast or ovarian cancer. Both BRCA1 and BRCA2 are involved in maintenance of genome stability; specifically the homologous recombination pathway for double-strand DNA repair. The BRCA2 protein contains several copies of a 70 aa motif called the BRC motif; and these motifs mediate binding to the RAD51 recombinase which functions in DNA repair. BRCA2 is considered a tumor suppressor gene; as tumors with BRCA2 mutations generally exhibit loss of heterozygosity (LOH) of the wild-type allele.

**Synonyms:**

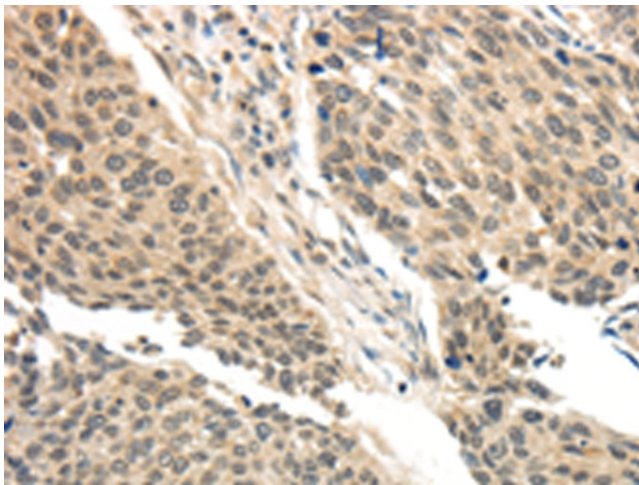
BRCC2; BROVCA2; FACD; FAD; FAD1; FANCD; FANCD1; GLM3; PNCA2; XRCC11

**Protein Families:**

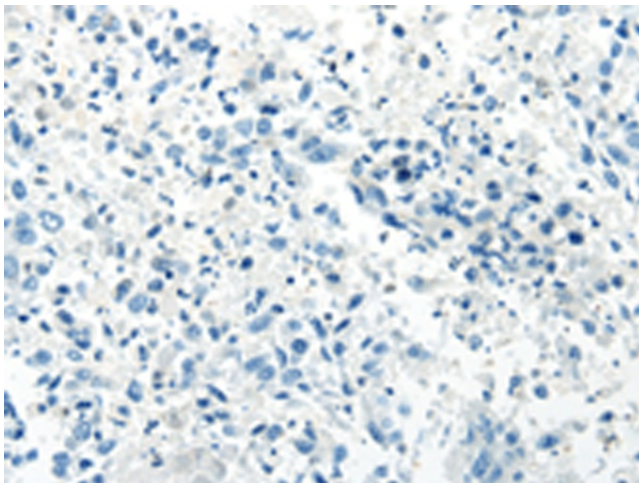
Druggable Genome

**Protein Pathways:**

Homologous recombination, Pancreatic cancer, Pathways in cancer

**Product images:**

Immunohistochemistry of paraffin-embedded Human lung cancer tissue using TA323750 (BRCA2 Antibody) at dilution 1/35 (Original magnification:  $\times 200$ )



Immunohistochemistry of paraffin-embedded Human lung cancer tissue using TA323750 (BRCA2 Antibody) at dilution 1/35, treated with synthetic peptide. (Original magnification:  $\times 200$ )