

## Product datasheet for **TA323746**

### p57 Kip2 (CDKN1C) Rabbit Polyclonal Antibody

#### Product data:

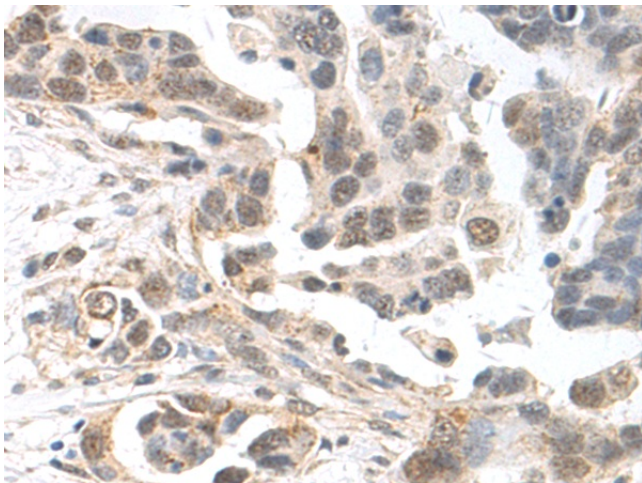
Product Type:	Primary Antibodies
Applications:	IHC
Recommended Dilution:	IHC: 50-200 Positive control: Human colorectal cancer Predicted cell location: Nucleus
Reactivity:	Human
Host:	Rabbit
Isotype:	IgG
Clonality:	Polyclonal
Immunogen:	Synthetic peptide corresponding to a region derived from 1-14 amino acids of human cyclin-dependent kinase inhibitor 1C (p57, Kip2)
Formulation:	PBS pH7.3, 0.05% NaN <sub>3</sub> , 50% glycerol
Concentration:	lot specific
Purification:	Antigen affinity purification
Conjugation:	Unconjugated
Storage:	Store at -20°C as received.
Stability:	Stable for 12 months from date of receipt.
Gene Name:	cyclin-dependent kinase inhibitor 1C
Database Link:	<a href="#">NP_000067</a> <a href="#">Entrez Gene 1028 Human</a> <a href="#">P49918</a>
Background:	This gene is imprinted; with preferential expression of the maternal allele. The encoded protein is a tight-binding; strong inhibitor of several G1 cyclin/Cdk complexes and a negative regulator of cell proliferation. Mutations in this gene are implicated in sporadic cancers and Beckwith-Wiedemann syndrome; suggesting that this gene is a tumor suppressor candidate. Three transcript variants encoding two different isoforms have been found for this gene.
Synonyms:	BWCR; BWS; KIP2; p57; p57Kip2; WBS
Protein Families:	Druggable Genome



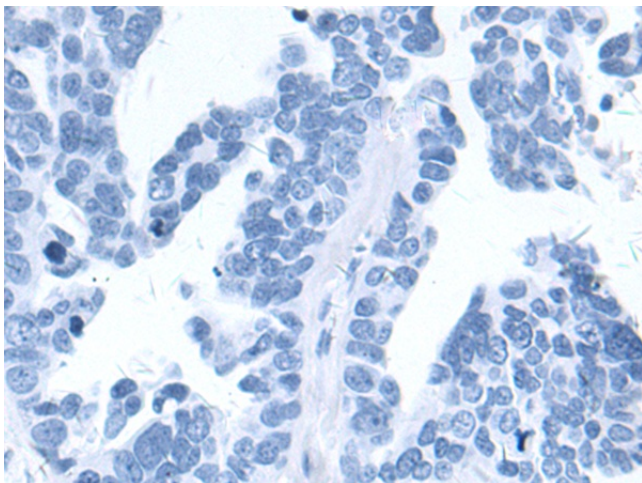
[View online »](#)

Protein Pathways: Cell cycle

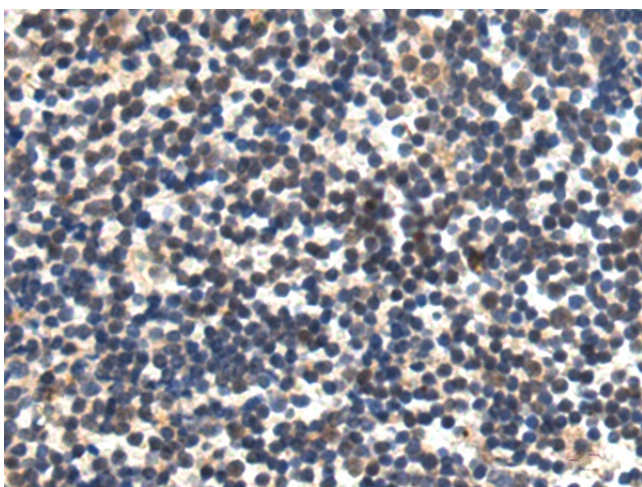
### Product images:



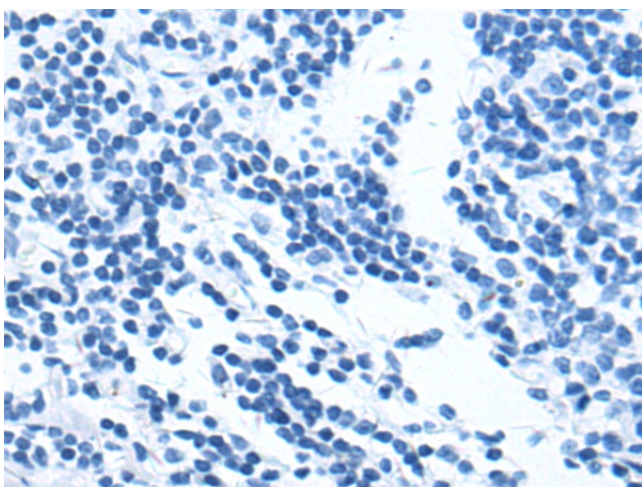
Immunohistochemistry of paraffin-embedded Human gastric cancer tissue using TA323746 (CDKN1C Antibody) at dilution 1/15 (Original magnification: ×200)



Immunohistochemistry of paraffin-embedded Human gastric cancer tissue using TA323746 (CDKN1C Antibody) at dilution 1/15, treated with synthetic peptide. (Original magnification: ×200)



Immunohistochemistry of paraffin-embedded Human thyroid cancer tissue using TA323746 (CDKN1C Antibody) at dilution 1/15 (Original magnification: ×200)



Immunohistochemistry of paraffin-embedded Human thyroid cancer tissue using TA323746 (CDKN1C Antibody) at dilution 1/15, treated with synthetic peptide. (Original magnification: ×200)