

## Product datasheet for **TA323744**

### Complement C3 (C3) Rabbit Polyclonal Antibody

#### Product data:

Product Type:	Primary Antibodies
Applications:	WB
Recommended Dilution:	ELISA: 1:1000-2000, WB: 1:200-1000
Reactivity:	Human
Host:	Rabbit
Isotype:	IgG
Clonality:	Polyclonal
Immunogen:	Synthetic peptide (KLH-coupled) derived from human C3
Formulation:	PBS pH7.3, 0.05% NaN <sub>3</sub> , 50% glycerol
Concentration:	lot specific
Purification:	Antigen affinity purification
Conjugation:	Unconjugated
Storage:	Store at -20°C as received.
Stability:	Stable for 12 months from date of receipt.
Predicted Protein Size:	70 kDa
Gene Name:	complement component 3
Database Link:	<a href="#">NP_000055</a> <a href="#">Entrez Gene 718 Human P01024</a>

**Background:** Complement component C3 plays a central role in the activation of complement system. Its activation is required for both classical and alternative complement activation pathways. People with C3 deficiency are susceptible to bacterial infection. Derived from proteolytic degradation of complement C3, C3a anaphylatoxin is a mediator of local inflammatory process. It induces the contraction of smooth muscle, increases vascular permeability and causes histamine release from mast cells and basophilic leukocytes.

**Synonyms:** AHUS5; ARMD9; ASP; C3a; C3b; CPAMD1; HEL-S-62p

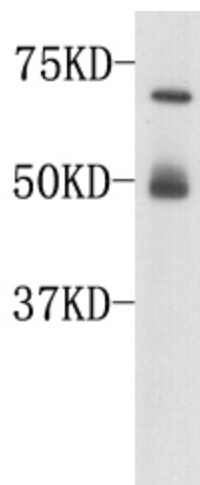
**Protein Families:** Druggable Genome



[View online »](#)

Protein Pathways: Complement and coagulation cascades, Systemic lupus erythematosus

**Product images:**



Predicted band size: 70 kDa. Positive control: Human serum. Recommended dilution: 1/ 200-1000. (Gel: 8%SDS-PAGE Lysate: 30 ug Primary antibody: 1/500 dilution Secondary antibody: Goat anti Rabbit IgG - H&L (HRP) at 1/10000 dilution Exposure time: 1 minute)