

Product datasheet for **TA323743S**

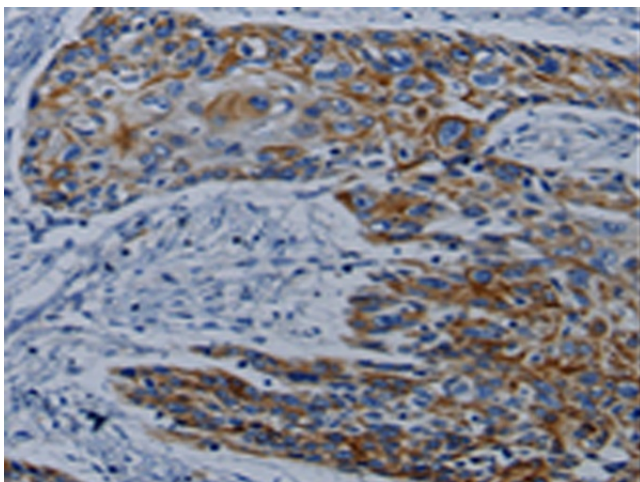
CPT2 Rabbit Polyclonal Antibody

Product data:

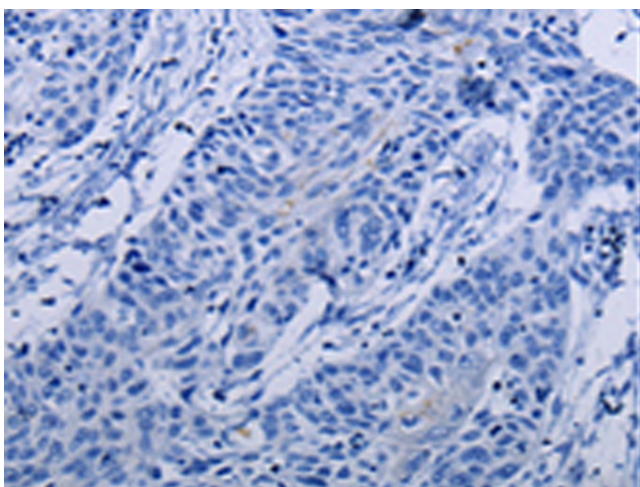
Product Type:	Primary Antibodies
Applications:	IHC
Recommended Dilution:	IHC: 10-50 Positive control: Human esophagus cancer Predicted cell location: Cytoplasm, Cell membrane
Reactivity:	Human, Mouse, Rat
Host:	Rabbit
Isotype:	IgG
Clonality:	Polyclonal
Immunogen:	Synthetic peptide corresponding to a region derived from 141-154 amino acids of Human Carnitine palmitoyltransferase 2
Formulation:	PBS pH7.3, 0.05% NaN ₃ , 50% glycerol
Purification:	Antigen affinity purification
Conjugation:	Unconjugated
Storage:	Store at -20°C as received.
Stability:	Stable for 12 months from date of receipt.
Gene Name:	carnitine palmitoyltransferase 2
Database Link:	NP_000089 Entrez Gene 12896 Mouse Entrez Gene 25413 Rat Entrez Gene 1376 Human P23786
Background:	The protein encoded by this gene is a nuclear protein which is transported to the mitochondrial inner membrane. Together with carnitine palmitoyltransferase I; the encoded protein oxidizes long-chain fatty acids in the mitochondria. Defects in this gene are associated with mitochondrial long-chain fatty-acid (LCFA) oxidation disorders.
Synonyms:	CPT1; CPTASE; IIAE4
Protein Families:	Druggable Genome
Protein Pathways:	Fatty acid metabolism, PPAR signaling pathway



[View online »](#)

Product images:

Immunohistochemistry of paraffin-embedded Human esophagus cancer tissue using [TA323743] (CPT2 Antibody) at dilution 1/10 (Original magnification: $\times 200$)



Immunohistochemistry of paraffin-embedded Human esophagus cancer tissue using [TA323743] (CPT2 Antibody) at dilution 1/10, treated with synthetic peptide. (Original magnification: $\times 200$)