

## Product datasheet for **TA323743**

### CPT2 Rabbit Polyclonal Antibody

#### Product data:

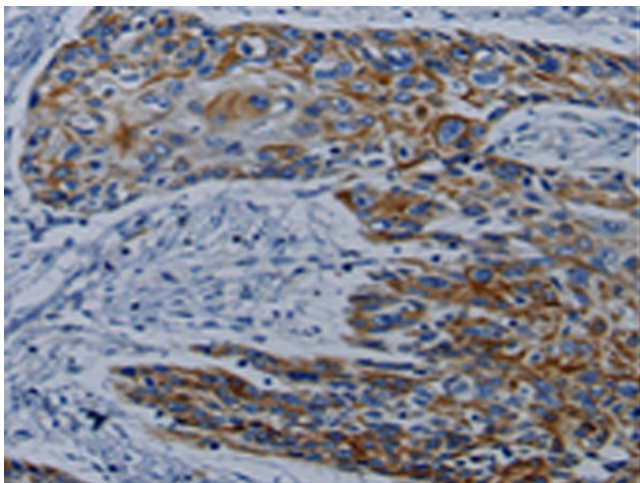
Product Type:	Primary Antibodies
Applications:	IHC
Recommended Dilution:	IHC: 10-50 Positive control: Human esophagus cancer Predicted cell location: Cytoplasm, Cell membrane
Reactivity:	Human, Mouse, Rat
Host:	Rabbit
Isotype:	IgG
Clonality:	Polyclonal
Immunogen:	Synthetic peptide corresponding to a region derived from 141-154 amino acids of Human Carnitine palmitoyltransferase 2
Formulation:	PBS pH7.3, 0.05% NaN <sub>3</sub> , 50% glycerol
Concentration:	lot specific
Purification:	Antigen affinity purification
Conjugation:	Unconjugated
Storage:	Store at -20°C as received.
Stability:	Stable for 12 months from date of receipt.
Gene Name:	carnitine palmitoyltransferase 2
Database Link:	<a href="#">NP_000089</a> <a href="#">Entrez Gene 12896 Mouse</a> <a href="#">Entrez Gene 25413 Rat</a> <a href="#">Entrez Gene 1376 Human</a> <a href="#">P23786</a>
Background:	The protein encoded by this gene is a nuclear protein which is transported to the mitochondrial inner membrane. Together with carnitine palmitoyltransferase I; the encoded protein oxidizes long-chain fatty acids in the mitochondria. Defects in this gene are associated with mitochondrial long-chain fatty-acid (LCFA) oxidation disorders.
Synonyms:	CPT1; CPTASE; IIAE4
Protein Families:	Druggable Genome



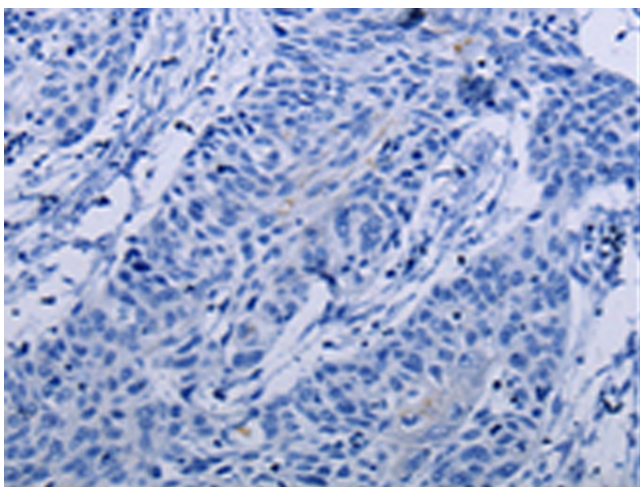
[View online »](#)

Protein Pathways: Fatty acid metabolism, PPAR signaling pathway

**Product images:**



Immunohistochemistry of paraffin-embedded Human esophagus cancer tissue using TA323743 (CPT2 Antibody) at dilution 1/10 (Original magnification:  $\times 200$ )



Immunohistochemistry of paraffin-embedded Human esophagus cancer tissue using TA323743 (CPT2 Antibody) at dilution 1/10, treated with synthetic peptide. (Original magnification:  $\times 200$ )