

Product datasheet for **TA323741**

Collagen V (COL5A1) Rabbit Polyclonal Antibody

Product data:

Product Type:	Primary Antibodies
Applications:	WB
Recommended Dilution:	WB: 1:500-2000
Reactivity:	Human, Mouse, Rat
Host:	Rabbit
Isotype:	IgG
Clonality:	Polyclonal
Immunogen:	Synthetic peptide corresponding to a region derived from 69-82 amino acids of human collagen, type V, alpha 1
Formulation:	PBS pH7.3, 0.05% NaN ₃ , 50% glycerol
Concentration:	lot specific
Purification:	Antigen affinity purification
Conjugation:	Unconjugated
Storage:	Store at -20°C as received.
Stability:	Stable for 12 months from date of receipt.
Predicted Protein Size:	184 kDa
Gene Name:	collagen type V alpha 1
Database Link:	NP_000084 Entrez Gene 12831 Mouse Entrez Gene 85490 Rat Entrez Gene 1289 Human P20908

Background: The extensive family of COL gene products (collagens) is composed of several chain types, including fibril-forming interstitial collagens (types I, II, III and V) and basement membrane collagens (type IV), each type containing multiple isoforms. Collagens are fibrous, extracellular matrix proteins with high tensile strength and are the major components of connective tissue, such as tendons and cartilage. All collagens contain a triple helix domain and frequently show lateral self-association in order to form complex connective tissues. Several collagens also play a role in cell adhesion, important for maintaining normal tissue architecture and function.



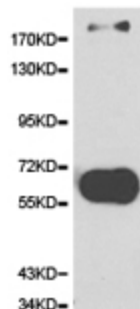
[View online »](#)

Synonyms: COL5A1

Protein Families: Druggable Genome

Protein Pathways: ECM-receptor interaction, Focal adhesion

Product images:



Predicted band size: 184 kDa. Positive control: Lung tissue lysate. Recommended dilution: 1/500-2000. (Gel: 8%SDS-PAGE Lysate: 40 ug Primary antibody: 1/500 dilution Secondary antibody: Goat anti Rabbit IgG - H&L (HRP) at 1/10000 dilution Exposure time: 1 minute)