

Product datasheet for **TA323729**

Fibrillin 1 (FBN1) Rabbit Polyclonal Antibody

Product data:

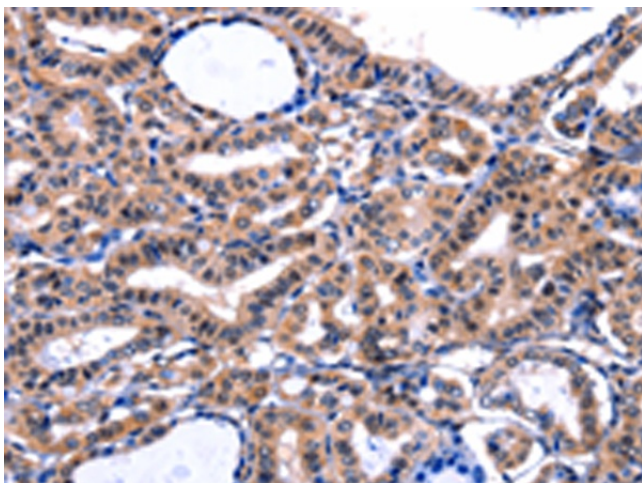
Product Type:	Primary Antibodies
Applications:	IHC
Recommended Dilution:	IHC: 50-200 Positive control: Human thyroid cancer Predicted cell location: Cytoplasm
Reactivity:	Human, Mouse
Host:	Rabbit
Isotype:	IgG
Clonality:	Polyclonal
Immunogen:	Synthetic peptide corresponding to a region derived from 2837-2853 amino acids of Human fibrillin 1
Formulation:	PBS pH7.3, 0.05% NaN ₃ , 50% glycerol
Concentration:	lot specific
Purification:	Antigen affinity purification
Conjugation:	Unconjugated
Storage:	Store at -20°C as received.
Stability:	Stable for 12 months from date of receipt.
Gene Name:	fibrillin 1
Database Link:	NP_000129 Entrez Gene 14118 Mouse Entrez Gene 2200 Human P35555
Background:	This gene encodes a member of the fibrillin family. The encoded protein is a large; extracellular matrix glycoprotein that serve as a structural component of 10-12 nm calcium-binding microfibrils. These microfibrils provide force bearing structural support in elastic and nonelastic connective tissue throughout the body. Mutations in this gene are associated with Marfan syndrome; isolated ectopia lentis; autosomal dominant Weill-Marchesani syndrome; MASS syndrome; and Shprintzen-Goldberg craniosynostosis syndrome.
Synonyms:	ACMICD; ECTOL1; FBN; GPHYSD2; MASS; MFS1; OCTD; SGS; SSKS; WMS; WMS2



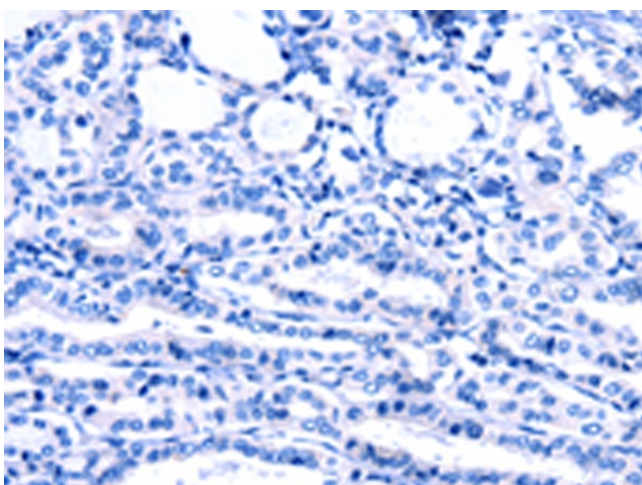
[View online »](#)

Protein Families: Druggable Genome

Product images:



Immunohistochemistry of paraffin-embedded Human thyroid cancer tissue using TA323729 (FBN1 Antibody) at dilution 1/47 (Original magnification: $\times 200$)



Immunohistochemistry of paraffin-embedded Human thyroid cancer tissue using TA323729 (FBN1 Antibody) at dilution 1/47, treated with synthetic peptide. (Original magnification: $\times 200$)